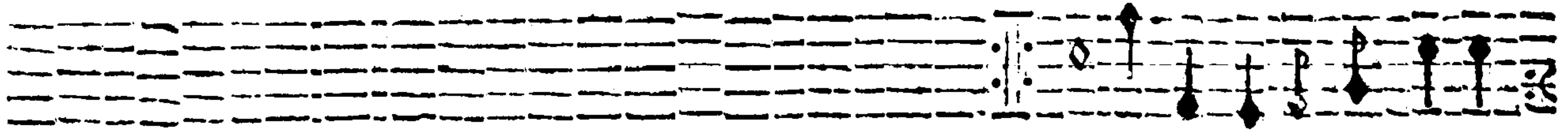
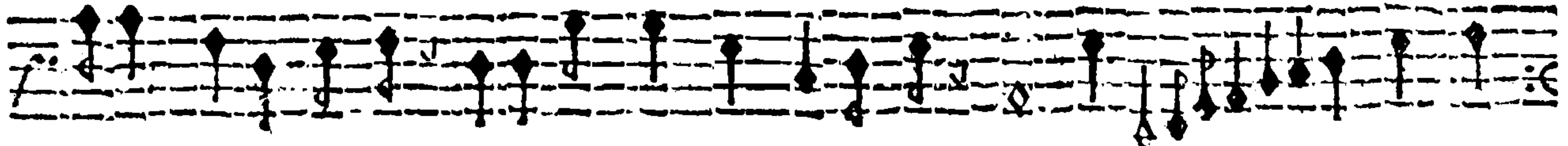


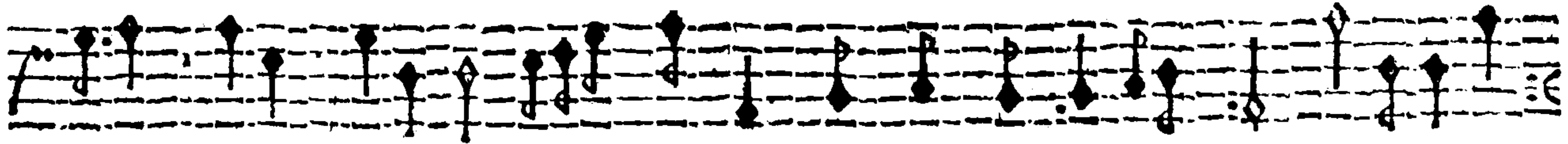
diloe with a dill dill diloe.



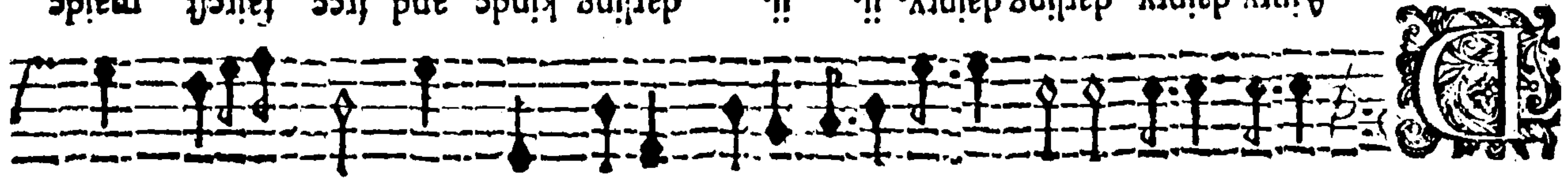
when I sing to thee, what I will doe with a diloe with a diloe diloe



I euer see, deare vouchsafe to looke on mee looke on mee listen listen listen



Ainy dainy dainy dainy, ii. ii. darling kinde and free fairest maide



BASSVS

The cabbature Base.

The tablature section consists of several staves. The first staff is titled 'The cabbature Base.' and shows a sequence of diamond symbols above a staff with letters 'a', 'b', 'c', 'd', 'e', 'f', 'g', 'h' below. The subsequent staves show more complex notation with letters and diamond symbols, likely representing fret positions and string numbers for a lute or similar instrument. The notation includes various letters (a, b, c, d, e, f, g, h) and diamond symbols placed on and below the staff lines.