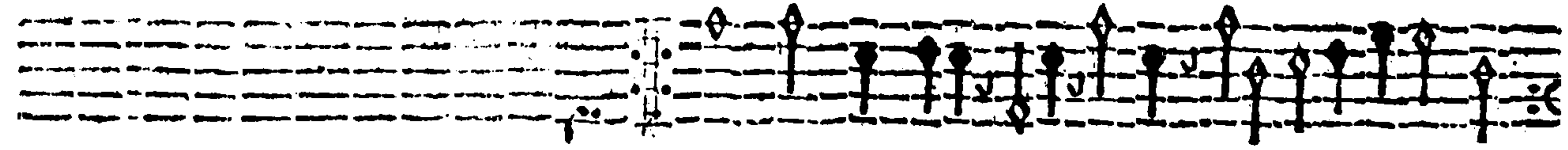
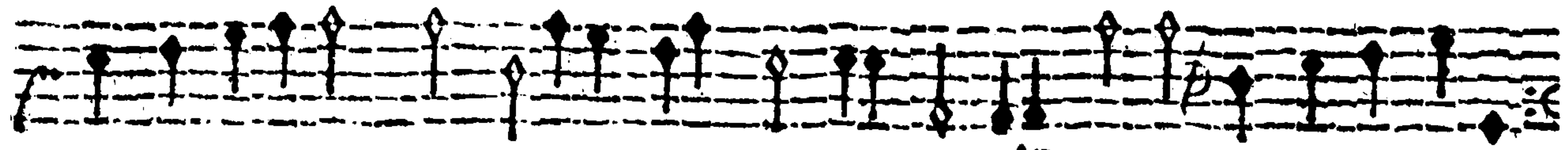


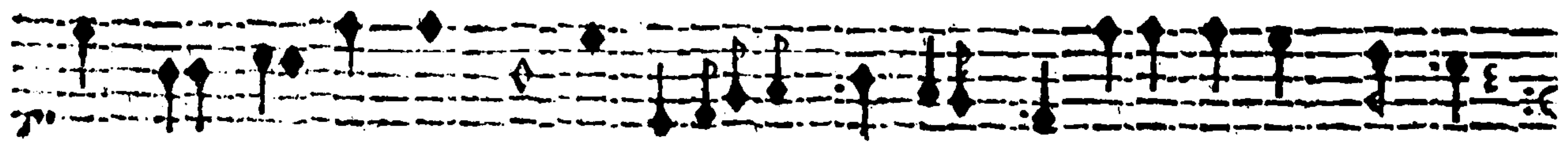
Itell, ii. your grandme.



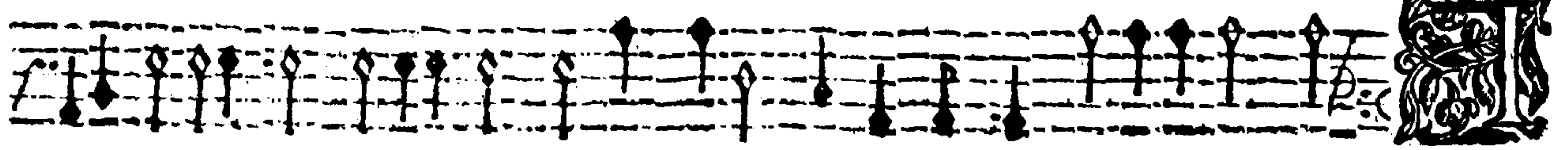
hie and not comeniethe, litte boy, prey knaue thoer not at random, for if you hit mee



ward him, the feare of the wagg hath made him fo bragg fo bragg, chide him, ii. hecle



Ques God is a boy none but cowards regard him, his dart is a toy great opinion hath



BASSVS

The tableture Base.

The Bass part consists of several staves. The first staff shows a series of diamond-shaped notes on a five-line staff, representing tablature. Below this are several staves of standard musical notation, including a treble clef and various notes and rests. The notation includes letters such as 'a', 'c', 'e', 'g', 'b', 'd', 'f' and numbers like '3', '4', '5', '6', '7', '8', '9', '10', '11', '12'.