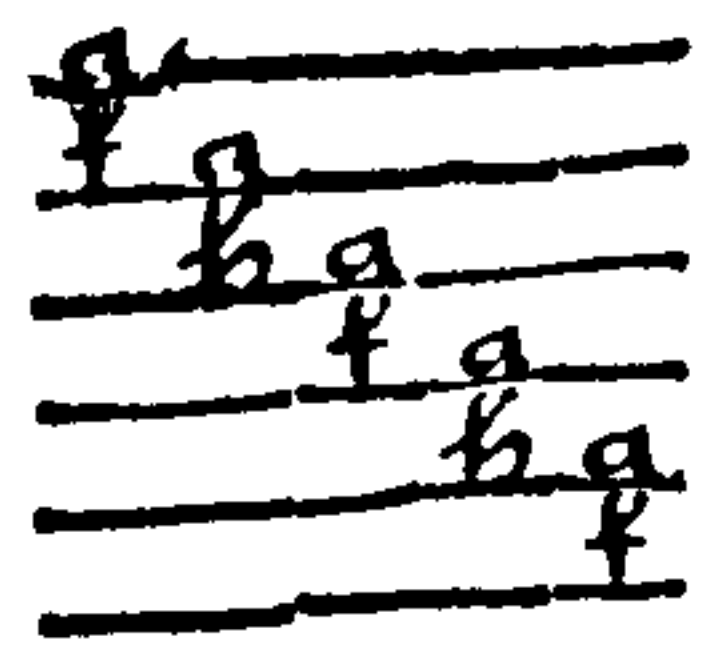


Lessons for the Lyra Violl.



The third tuning.



Musical notation for the first system of the 'Lmaine' piece, featuring a treble clef and various notes with dynamic markings like 'p' and 'f'.

Lmaine,

Musical notation for the second system of the 'Lmaine' piece, continuing the melodic line with dynamic markings.

Musical notation for the third system of the 'Lmaine' piece, including a repeat sign at the end.

Musical notation for the fourth system of the 'Lmaine' piece, featuring a repeat sign at the end.

Musical notation for the fifth system of the 'Lmaine' piece, including a repeat sign at the end.

Musical notation for the sixth system of the 'Lmaine' piece, including a repeat sign at the end.

Musical notation for the seventh system of the 'Lmaine' piece, including a repeat sign at the end.

Musical notation for the eighth system of the 'Lmaine' piece, including a repeat sign at the end.

Musical notation for the ninth system of the 'Lmaine' piece, including a repeat sign at the end.