

## ABEL, Clamor Heinrich (1634-1696)

‘Sonata sopra CucCuc’ in G major for violin, bass viol and continuo



GB-DRc, D2, no. 19 [H. Abell]  
GB-HADolmetsch, II.c.25, no. 9 [Clamor Hen  
Abell]  
GB-Lbl, Add. 31423, ff. 230/249/261v (no. 14)  
[Anon.]

for 2 violins and continuo



F-Pn, Rés Vm<sup>7</sup> 673, no. 45



F-Pn, Rés Vm<sup>7</sup> 673, no. 86

Further information from Richard Carter:

Abel's *Erstlinge Musicalischer Blumen* was published in three collections:

The first, 1674, ‘mit vier instrumenten und Basso continuo’ is probably for four part violin band with two treble violins: 59 pieces arranged into 8 suites, followed by a final group of 9 pieces (all in one key), starting with the Sonata Battaglia.

The second, 1676 (not 1675), ‘mit vier Instrumenten Sampt dem Basso Continuo’ contains a further 52 pieces, grouped into 10 suites and similar in style to the 1674 collection.

The third, 1677, ‘mit einer Violin, theils mit einer Verstimbten Viola da Gamba und Violin’ contains 51 pieces, grouped into 15 suites. The Viola da Gamba partbook has not survived. ‘From Abel’s introductory note it seems clear that the first 8 suites were for Violin and Cembalo, and he says the viol part for the remainder is optional. Whether this was sales talk or means that the lyra viol merely amplified the bc is hard to say. There are no clues as to the tuning(s) employed for the viol, but interestingly the violin also uses scordatura (e" a' e' a) in the final suite.’

# Clamor Heinrich Abel - Erstlinge Musicalischer Blumen (1674)

1. Praeludium. Sonatina.  
Adagio. Allegro.

2. Allemanda. 3. Corrente.

4. Sarabanda. 5. Gigue.  
Adagio.

6. Praeludium. Sonatina.  
adagio. Allegro.

7. Allemanda. 8. Corrente.

9. Sarabanda. 10. Gigue.

11. Sarabanda. 12. Gigue.

13. Praeludium. Sonatina.  
Adagio. Allegro.

14. Allemanda. 15. Corrente.

16. Sarabanda. 17. Gigue.

Clamor Heinrich Abel - Erstlinge Musicalischer Blumen (1674)

18. Praeludium. Sonatina.  
Adagio. Allegro.

19. Allemanda. 20. Corrente.

21. Sarabanda. 22. Gigue.

23. Praeludium. Sonatina.  
Adagio. Allegro.

24. Allemanda. 25. Corrente.

26. Sarabanda. 27. Gigue.

28. Praeludium. Sonatina.  
Adagio. Allegro.

29. Allemanda. 30. Corrente.

31. Sarabanda. 32. Gigue.

33. Praeludium. Sonatina.  
Adagio. Allegro.

Clamor Heinrich Abel - Erstlinge Musicalischer Blumen (1674)

34. Allemanda.



35. Corrente.



36. Sarabanda.



37. Gigue.



38. Praeludium.



Sonatina.



39. Allemanda.



40. Corrente.



41. Sarabanda.



42. Gigue.



43. Praeludium.



Sonatina.



44. Allemanda.



45. Corrente.



46. Sarabanda.



47. Gigue.



48. Praeludium.



Sonatina.



49. Allemanda.



50. Corrente.



51. Sarabanda.



52. Gigue.



Clamor Heinrich Abel - Erstlinge Musicalischer Blumen (1675/6)

1. Praeludium.



2. Allemanda.



3. Corrente.



4. Sarabanda.



5. Gigue.



6. Allemanda.



7. Corrente.



8. Sarabanda.



9. Gigue.



10. Praeludium.



11. Allemanda.



12. Corrente.



13. Sarabanda.



14. Gigue.



15. Praeludium. [note: this key sig. in PARS PRIMA only, in error]



16. Allemanda.



17. Corrente.



18. Sarabanda.



19. Allemanda.



20. Corrente.



21. Sarabanda.



22. Gigue.





Clamor Heinrich Abel - Erstlinge Musicalischer Blumen (1675/6)

41. Praeludium.



42. Allemanda.



43. Corrente.



44. Sarabanda.



45. Gigue.



46. Praeludium.



47. Allemanda.



48. Corrente.



49. Sarabanda.



50. Gigue.



51. Sonata Battaglia.



52. Allemanda.



53. Ballo presto.



54. Corrente.



55. Gavotte.



56. Sarabanda.



57. Ballet.



58. Sarabanda.



59. Gigue.



NOTE: for nos. 56-59 the second part is missing.

# ACHILLEO, Paolo

2 vln, bc

[Sonata]

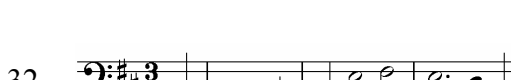


F-Pn, Rés Vm<sup>7</sup> 673, no. 131



# ADSON, John

c.1586-1640)



ADSON, John (1586/7-1640) Courtly Masquing Ayres (1621)	GB-Lbl, Add. 10444 (a2: Treble/Bass)	GB-Lbl, Add. 38539	
<p>Five-part pieces</p> <p>1. Adsonns Masque*</p> <p>2. Mr Adson Masque</p> <p>3. Adsonns Masque</p> <p>4. Essex Anticke Masque</p> <p>5. The First of my Lord of Essex</p> <p>6. The Second</p> <p>7. The Third</p> <p>8. The Second [Temple Antick]</p> <p>9. The First of the Temple Antick</p> <p>10. The First Witches Dance</p> <p>11. Broxboorn berry Maske</p> <p>12. Broxboorn berry Maske</p> <p>13. Williams his Loue</p> <p>14.</p> <p>15. Van-weelly</p> <p>16.</p> <p>17.</p> <p>18.</p> <p>19.†</p> <p>20.†</p> <p>21.†</p> <p>*titles from GB-Lbl, Add. 10444</p> <p>†‘for Cornets and Sagbuts’</p> <p>Six-part pieces†</p> <p>1.</p> <p>2.</p> <p>3.</p> <p>4.</p> <p>5.</p> <p>6.</p> <p>7.</p> <p>8.</p> <p>9.</p> <p>10.</p>	<p>f./no.</p> <p>15v;70v/9</p> <p>39v;90r/83</p> <p>39v;90r/84</p> <p>42r;92r/92</p> <p>42v;92r/93</p> <p>42v;92v/94</p> <p>42v;92v/95</p> <p>51r;100r/123</p> <p>50v;100r/122</p> <p>21r;74v/25</p> <p>13r;67v/5</p> <p>13r;67v/4</p> <p>47r;96v/110</p> <p>34r;85r/64</p> <p>38v;89v/81</p> <p>treble; bass only</p>	<p>[Lute]</p> <p>f.30v</p>	<p>[Robert Johnson]</p>
	<p>GB-Ob, Mus. Sch. D.220</p>		
<p>32. Corant</p> <p>C/a</p>	<p>p.39, no.36 a2: bass only</p>		<p>ADSON-2</p>
<p>January 2009</p>			





RICHARD ALLISON Mixed Consorts - concluded	OTHER ABBREVIATIONS Consort of Six { Treble Tr Lute L Flute Fl Cittern C Bandora P Bass B Recorder R Solo S	MORLEY 1599	MORLEY 1611	ROSSETER 1609	SIMPSON 1617	WALSINGHAM	CU MSS						Lb1		Private hands		Publications					
							Dd 4.22	'Cambridge Consort books'			Dd 2.11	Dd 5.78.3	Add MS 31392	Hirsch MS M1353	f.	f.	no.	no.				
								Dd 5.21	Dd 3.18	Dd 5.20									no.	no.		
Go from my window E607		12 A not L	12 A not L			33 TFH CB	f.	f. 12' PA	f. 34' L	f.	f.	f.	f.	f.	f.			no.	no.	12		
Mrs. Millicent's pavin E608				12 Fl C					57' L	10' B												
-galliard E801				12 Fl C					-	-												
Mr Alisons Almayne E673						16 TFH CB								15' P	10 L							4
Quadro pavin E674		1 A not L			XXII a5	29 TFH CB	4'													1		
-galliard E833		2 A not L				29 TFH CB	4'													2		
Paven Dolorosa E701						11 TFH CB		7' A R	46' A L	7' A B	4' SL	32' SL										3
Pavin E702									19' L		71 SL	33 SL	30' SL	3' A SL								
The Spanish Measure E873						22 CB																

Browne bandora & lute viol book  
Sampson lute book (formerly Tollemache)

# JOHN AMNER

Verse anthems

Pavan and Galliard a5

AMNER 1615

GB-  
Lbl  
Add  
MSS

30826-8

Ob  
MSS  
MUS

f. 20-24

Och  
MSS

56-60

US-  
NYp  
MSS

Drexel  
4180-5

CORDA MUSIC

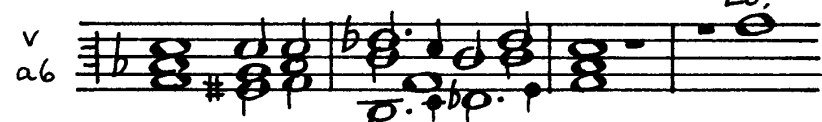
O ye little flock



Fear not

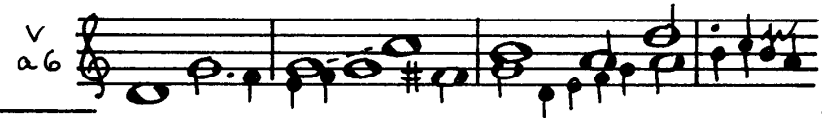
And they cry

Lo, how from heaven

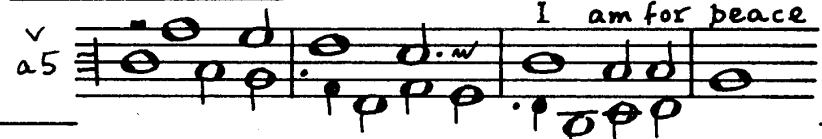


I bring you glad tidings

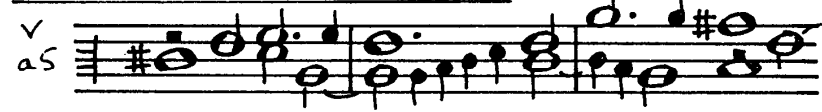
My Lord is hence removed



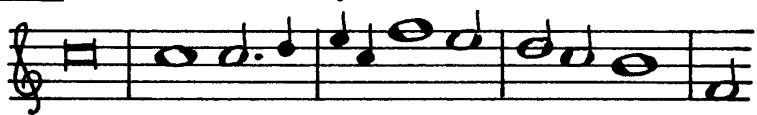
I am for peace



Consider all ye passers by



Pavan a5 (incomplete)



Galliard a5 (incomplete)



no.

19

no.

no. a6

11

P.

f.

60'

20

12

61'

21

13

62

22

14

62'

23

15

63

25

64

6

98

3 parts  
only

4 parts  
only

1

2

✓

✓

Mr. ANTHONYE

Preludium 1      fefhf  
for solo lyra viol      F

Handwritten musical notation on a five-line staff. The notation includes two treble clefs at the top. The first measure contains the notes 'a', 'c', 'e', 'f' with a slur over them. The second measure contains 'a', 'c', 'e', 'a', 'c'. The third measure contains 'a', 'b' with a slur over them. The fourth measure contains 'a', 'b', 'a'. The fifth measure contains 'a', 'c', 'd', 'a'. There are also some handwritten symbols like '∂' and 'b' with a slur over them.

GB-Mp MS 832 Vu 51, 3rd tuning, no. 1; P. 37:2

ANTHONYE-1

# ARNALD

'Sig<sup>F</sup> Arnald, K. Denmark, Gen. July  $\frac{30}{92}$ '

Divisions, one on each section

Ground

I.



II.



GB-03 MS Mus Sch

C.61, p.32 rev:1



ARNOLD, Gregory

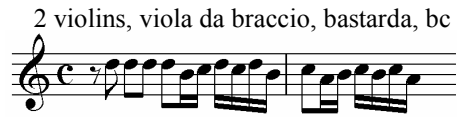
D-W,  
Cod.  
Guelf.  
34.7.  
Aug 2<sup>o</sup>

Canzona



no./p.  
67/120

Canzona



77/149

# John ATKINSON

Perhaps the Court musician (died 1671)

VdGS No.

1. Saraband C  GB-Ob, MS Mus. Sch. D.220,  
p. 81, no. 60 (bass only)

Mr. **AYLWARD**

Ayre 1

for solo lyra viol

defhf  
G

d. ♪	♪	♪	♪	♪	♪	♪	♪	♪	♪
a	ab	d				accab		ab	ac
a			aceca					a	
a			a						
a					a				

PLAYFORD-T no. 229