

DIBELS™ - Initial Sound Fluency¹
Dynamic Indicators of Basic Early Literacy Skills™ 6th Ed.
University of Oregon

Directions for Administration and Scoring

Target Age Range

Initial Sound Fluency														
Beg	Mid	End	Beg	Mid	End	Beg	Mid	End	Beg	Mid	End	Beg	Mid	End
Preschool			Kindergarten			First Grade			Second Grade			Third Grade		

Initial Sound Fluency is intended for most children from the last year of preschool through the middle of kindergarten. It may be appropriate for monitoring the progress of older children with very low skills in phonological awareness.

Description

DIBELS™ Initial Sound Fluency (ISF) is a standardized, individually administered measure of phonological awareness that assesses a child’s ability to recognize and produce the initial sound in an orally presented word (Kaminski & Good, 1998; Laimon, 1994). The examiner presents four pictures to the child, names each picture, and then asks the child to identify (i.e., point to or say) the picture that begins with the sound produced orally by the examiner. For example, the examiner says, “This is sink, cat, gloves, and hat. Which picture begins with /s/?” and the student points to the correct picture. The child is also asked to orally produce the beginning sound for an orally presented word that matches one of the given pictures. The examiner calculates the amount of time taken to identify/produce the correct sound and converts the score into the number of onsets correct in a minute.

The ISF measure takes about 3 minutes to administer and has over 20 alternate forms to monitor progress. The ISF measure is a revision of the Onset Recognition Fluency (OnRF) measure incorporating minimal revisions. Alternate-form reliability of the OnRF measure is .72 in January of kindergarten (Good, Kaminski, Shinn, Bratten, Shinn, & Laimon, in preparation). By repeating the assessment four times, the resulting average is estimated to have a reliability of .91 (Nunnally, 1978). The concurrent, criterion-related validity of OnRF with DIBELS PSF is .48 in January of kindergarten and .36 with the Woodcock-Johnson Psycho-Educational Battery Readiness Cluster score (Good et al., in preparation). The predictive validity of OnRF with respect to spring-of-first-grade reading on CBM ORF is .45, and .36 with the Woodcock-Johnson Psycho-Educational Battery Total Reading Cluster score (Good et al., in preparation). The

¹ Prior editions were supported, in part, by the Early Childhood Research Institute on Measuring Growth and Development (H180M10006) funded by the U. S. Department of Education, Special Education Programs and Student-Initiated Grant (90CD0819) funded by the U. S. Department of Education, Special Education Programs. The authors acknowledge with appreciation the assistance of Melissa Finch, John Bratten, Nancy Bank, Ambre ReMillard, Diane Hill, Hank Fien, David VanLoo, Rachell Katz, Jennifer Knutson, Scott Baker, Stephanie Vincent, Lisa Habedank Stewart, and Marty Ikeda. Images are modified, published, and distributed by license from Nova Development Corporation (1998).

Good, R. H., Laimon, D., Kaminski, R. A., & Smith, S. (2002). Initial Sound Fluency. In R. H. Good & R. A. Kaminski (Eds.), *Dynamic Indicators of Basic Early Literacy Skills* (6th ed.). Eugene, OR: Institute for the Development of Educational Achievement. Available: <http://dibels.uoregon.edu/>.

benchmark goal is 25 to 35 initial sounds correct by the middle of kindergarten. Students scoring below 10 initial sounds correct in the middle of kindergarten may need intensive instructional support.

Materials: Examiner copy of probe, student practice pictures, student probe pictures, clipboard, stopwatch, colored pen.

Directions for Administration

1. Place examiner copy of probe on clipboard and position so that student cannot see what you record.
2. Place the student copy of 4 practice pictures in front of the child.
3. Say these specific directions to the student:

This is mouse, flowers, pillow, letters. (point to each picture while saying its name) ***Mouse*** (point to mouse) ***begins with the sound /m/. Listen, /m/ mouse. Which one begins with the sounds /f/?***

CORRECT RESPONSE: Student points to flowers, you say,	INCORRECT RESPONSE: If student gives any other response, you say,
<i>Good. Flowers begins with the sounds /f/.</i>	<i>Flowers</i> (point to flowers) <i>begins with the sounds /f/.</i> Listen, <i>/f/ flowers. Lets try it again. Which one begins with the sounds /f/?</i>

Pillow (point to pillow) ***begins with the sound /p/. Listen, /p/ pillow. What sound does letters*** (point to letters) ***begin with?***

CORRECT RESPONSE: Student says /l/, you say,	INCORRECT RESPONSE: If student gives any other response, you say,
<i>Good. Letters begins with the sound /l/.</i>	<i>Letters</i> (point to letters) <i>begins with the sound /l/.</i> Listen, <i>/l/ letters. Lets try it again. What sound does letters</i> (point to letters) <i>begin with?</i>

Here are some more pictures. Listen carefully to the words.

4. Show the child the first page of student probe pictures. Point to each picture and say the name following the standardized directions.
5. Present the first question as written on the score sheet. **After you finish asking the question, begin your stopwatch. Stop your stopwatch as soon as the child responds.** If the child does not respond after **5 seconds**, score the question as zero and present the next question.

6. As soon as the student responds, present the next question promptly and clearly. Begin your stopwatch after you have said the question, and stop it as soon as the student responds, as above.
7. Score the child's response as either correct (1 point) or incorrect (0 points).
8. If the child stops or struggles with a question for 5 seconds, score the question as zero and present the next question.
9. After the first 4 questions, proceed to the next page of student probe pictures. Continue until the end of the questions. When the child finishes the last question, record the total time on your stopwatch in seconds and add the number of correct responses. Record the total number correct and the time in seconds on the bottom of the scoring sheet.

10. Calculate the ISF Score using the formula:

$$ISF = \frac{60 \times \text{Number Correct}}{\text{Seconds}}$$

11. **Prompting Rule.** If a child has done the examples correctly and does not answer the questions correctly, say "**Remember to tell me a picture that begins with the sound** (repeat stimulus sound)." This prompt can be given once.

Directions for Scoring

1. **Discontinue Rule.** If a child has a score of 0 on the first five questions, discontinue the probe and give a score of 0.
2. If the child names the correct picture instead of pointing to it, score as correct.

PROMPT:	STUDENT SAYS:	SCORE:
This is pie, letter, flower and mouse. Which picture begins with /p/?	"pie"	0 (1)

3. If the child re-names a picture *and* the name begins with the correct (target) initial sound, score as correct. For example, if the target picture is "hand" for /h/ and the student points at road and says "highway," score as correct.

PROMPT:	STUDENT SAYS:	SCORE:
This is road, barn, hand and egg. Which picture begins with /h/?	"highway"	0 (1)

4. If the child re-names the picture and the name begins with an incorrect initial sound, score as incorrect. For example, if the target picture is "barn" for /b/ and the student points at barn but says, "house," score as incorrect.

PROMPT:	STUDENT SAYS:	SCORE:
This is road, barn, hand and egg. Which picture begins with /b/?	"house"	(0) 1

5. **Correct Initial Consonant Sound:** If the word starts with an initial consonant sound, the child can respond with the first sound or initial sounds. For example, if the word is “clock” a correct initial sound would be /c/ or /cl/ or /klo/ but not /l/ or “clock.”

PROMPT:	STUDENT SAYS:	SCORE:
What sound does “clock” begin with?	/k/	0 (1)
What sound does “clock” begin with?	/kl/	0 (1)
What sound does “clock” begin with?	/klo/	0 (1)
What sound does “clock” begin with?	/l/	(0) 1
What sound does “clock” begin with?	“clock”	(0) 1

6. **Correct Initial Vowel Sound:** If the word starts with an initial vowel sound, the child can respond with the initial vowel sound or initial sounds. For example, if the word is “elephant” a correct initial sound would be /e/ or /el/ or /ele/, but not the name of the letter /ea/.

PROMPT:	STUDENT SAYS:	SCORE:
What sound does “elephant” begin with?	/e/	0 (1)
What sound does “elephant” begin with?	/el/	0 (1)
What sound does “elephant” begin with?	/ea/	(0) 1
What sound does “elephant” begin with?	/ele/	0 (1)

7. Schwa sound (/u/) added to a consonant is not counted as an error. Some phonemes cannot be pronounced correctly in isolation without a vowel, and some early learning of sounds includes the schwa.

PROMPT:	STUDENT SAYS:	SCORE:
What sound does “clock” begin with?	/ku/	0 (1)
What sound does “clock” begin with?	/klu/	0 (1)

8. **Articulation Difficulty:** The student is not penalized for imperfect pronunciation due to dialect, articulation, or second language interference. For example, the student responds /th/ when asked for the first sound in “sink.” If the student consistently says /th/ for /s/, as in “thircle” for “circle,” he or she should be given credit for a correct initial sound. This is a professional judgment and should be based on the student’s responses and any prior knowledge of his/her speech patterns.

PROMPT:	STUDENT SAYS:	SCORE:
What sound does “sink” begin with?	/th/	0 (1)

Pronunciation Guide:

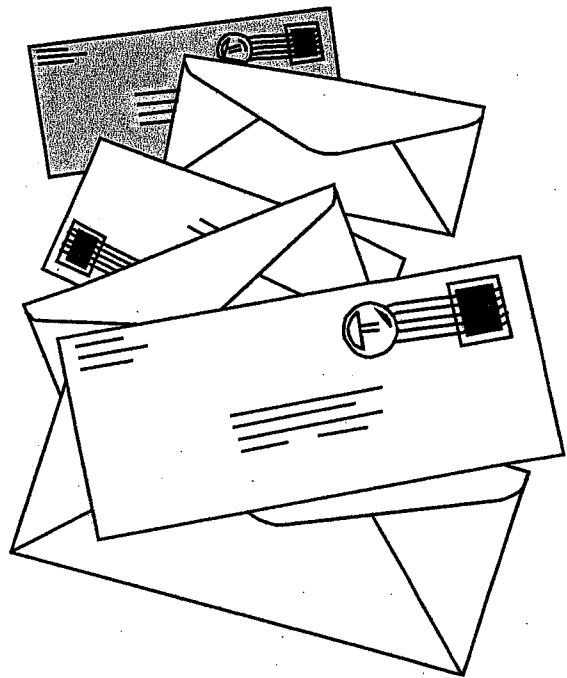
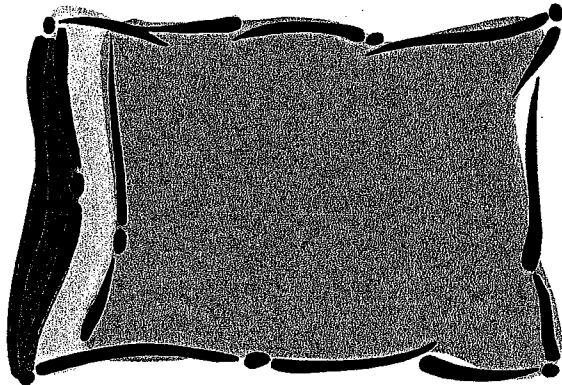
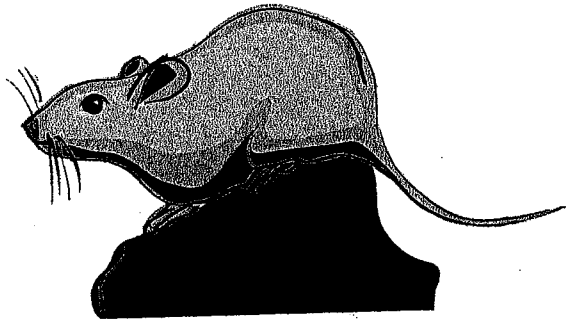
Different regions of the country use different dialects of American English. These pronunciation examples may be modified or distinguished consistent with regional dialects and conventions. See scoring note on Page 12 for clarification.

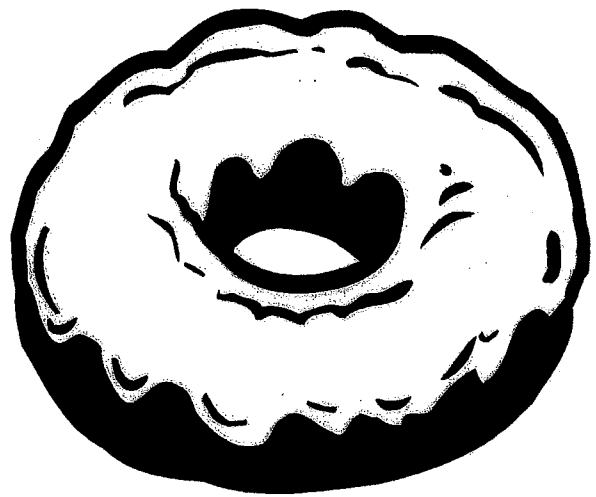
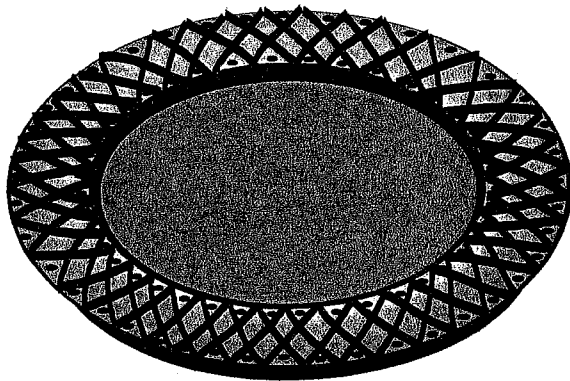
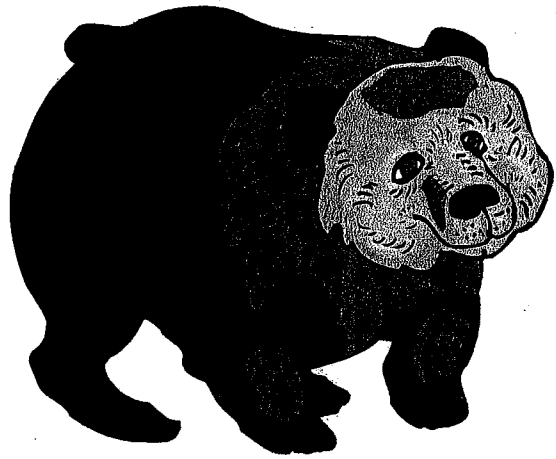
<u>Phoneme</u>	<u>Phoneme Example</u>	<u>Phoneme</u>	<u>Phoneme Example</u>
/ai/	bait	/th/	thin
/ea/	bead	/TH/	then
/ie/	tie	/sh/	shed
/oa/	boat	/SH/	measure or beige
/oo/	food	/ch/	chin
/a/	bad	/j/	jam & edge
/e/	bed	/p/	pen
/i/	bid	/t/	tap
/o/	cod or law	/k/	can
/u/	bud and “a” in about	/b/	bat
/uu/	good	/d/	dad
/ow/	cow	/g/	gun or frog
/oi/	noise or point	/m/	man or jam
/ar/	(1 phoneme) car	/n/	nap
/ir/	(1 phoneme) bird	/ng/	sing
/or/	(1 phoneme) for	/f/	fat
/āi/ r/	(2 phonemes) chair	/v/	van
/ea/ r/	(2 phonemes) clear	/s/	sit
/oo/ r/	(2 phonemes) tour	/z/	zoo
		/r/	rat or frog
		/l/	lap
		/w/	wet
		/h/	hot
		/y/	yell

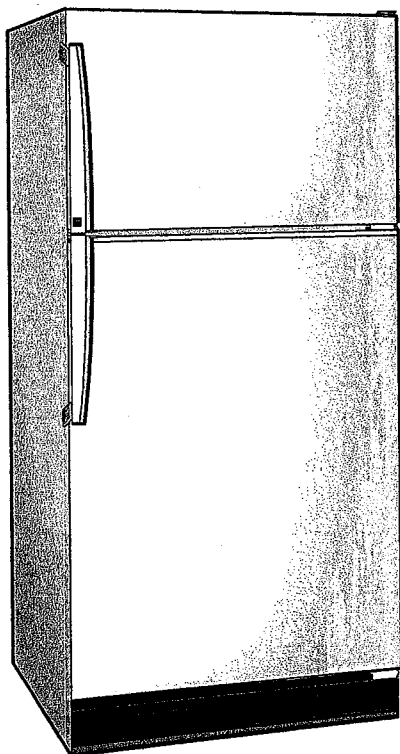
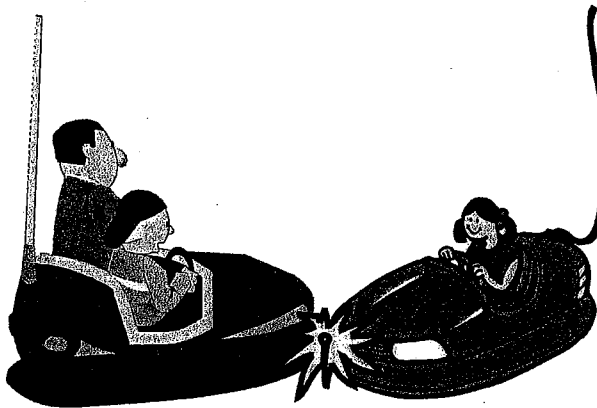
**DIBELS™ Initial Sound Fluency
Assessment Integrity Checklist**

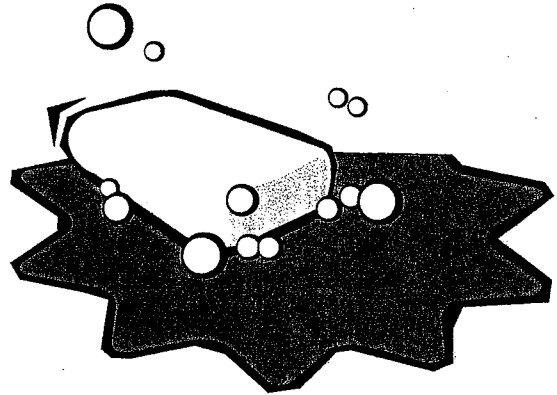
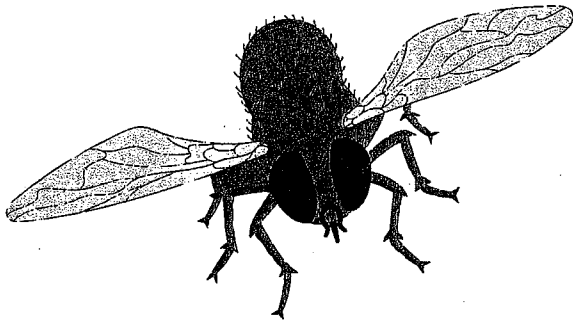
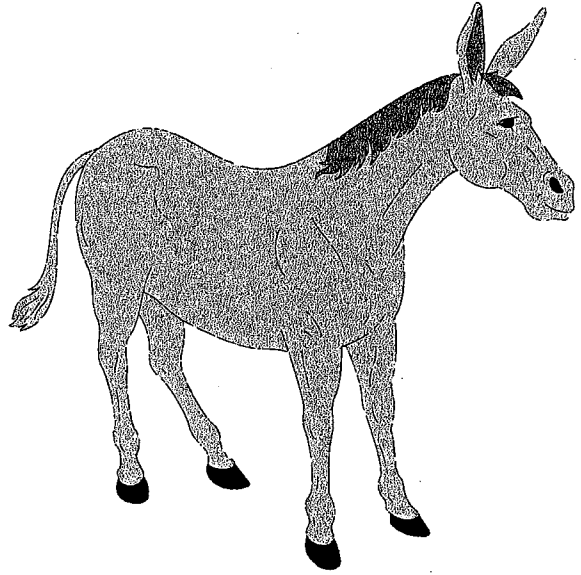
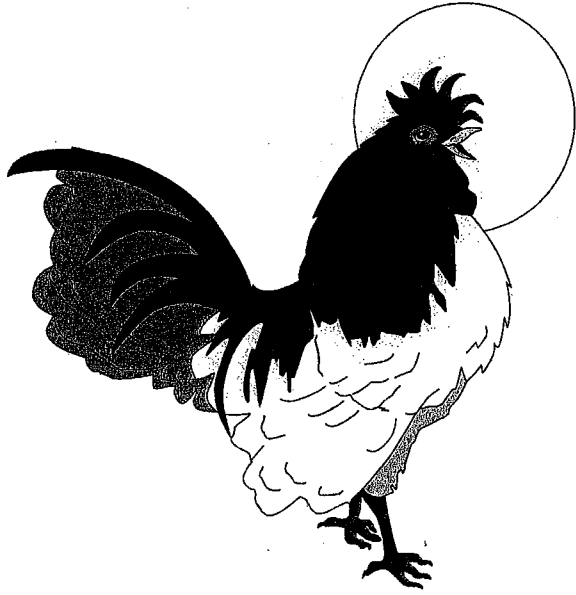
Directions: As the observer, please observe setup and directions, time and score the test with the examiner, check examiner's accuracy in following procedures, and decide if examiner passes or needs more practice.

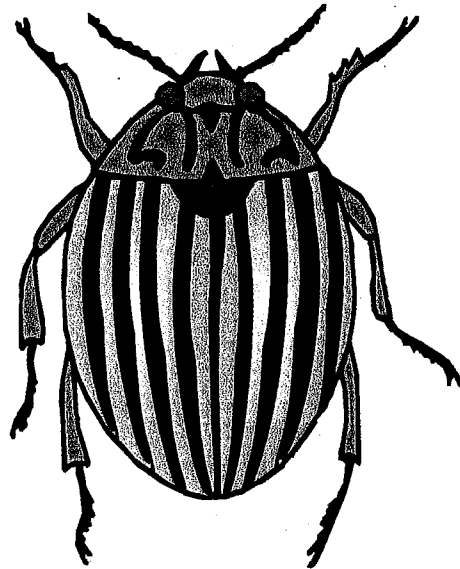
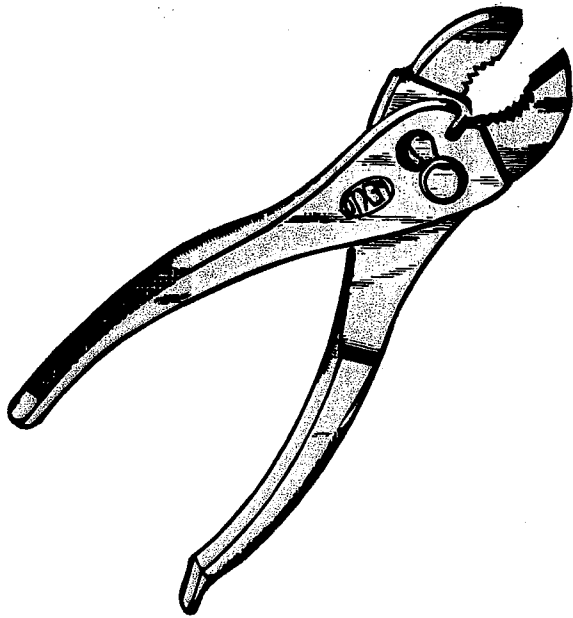
Fine	Needs Practice									
√ box to indicate Fine or Needs Practice										
<input type="checkbox"/>	<input type="checkbox"/>	<p>1. Performs standardized directions verbatim:</p> <p><i>This is mouse, flowers, pillow, letters. Mouse begins with the sound /m/. Listen, /m/ mouse. Which one begins with the sounds /f/?</i></p> <table border="1" style="width: 100%; border-collapse: collapse;"> <thead> <tr> <th style="width: 50%;">CORRECT RESPONSE</th> <th style="width: 50%;">INCORRECT RESPONSE</th> </tr> </thead> <tbody> <tr> <td><i>Good. Flowers begins with the sounds /f/.</i></td> <td><i>Flowers begins with the sounds /f/ (point to flowers). Listen, /f/ flowers. Lets try it again. Which one begins with the sounds /f/?</i></td> </tr> </tbody> </table> <p><i>Pillow begins with the sound /p/. Listen, /p/ pillow. What sound does letters begins with?</i></p> <table border="1" style="width: 100%; border-collapse: collapse;"> <thead> <tr> <th style="width: 50%;">CORRECT RESPONSE</th> <th style="width: 50%;">INCORRECT RESPONSE</th> </tr> </thead> <tbody> <tr> <td><i>Good. Letters begins with the sound /l/.</i></td> <td><i>Letters begins with the sound /l/. Listen, /l/ letters. Lets try it again. What sound does letters begin with?</i></td> </tr> </tbody> </table>	CORRECT RESPONSE	INCORRECT RESPONSE	<i>Good. Flowers begins with the sounds /f/.</i>	<i>Flowers begins with the sounds /f/ (point to flowers). Listen, /f/ flowers. Lets try it again. Which one begins with the sounds /f/?</i>	CORRECT RESPONSE	INCORRECT RESPONSE	<i>Good. Letters begins with the sound /l/.</i>	<i>Letters begins with the sound /l/. Listen, /l/ letters. Lets try it again. What sound does letters begin with?</i>
CORRECT RESPONSE	INCORRECT RESPONSE									
<i>Good. Flowers begins with the sounds /f/.</i>	<i>Flowers begins with the sounds /f/ (point to flowers). Listen, /f/ flowers. Lets try it again. Which one begins with the sounds /f/?</i>									
CORRECT RESPONSE	INCORRECT RESPONSE									
<i>Good. Letters begins with the sound /l/.</i>	<i>Letters begins with the sound /l/. Listen, /l/ letters. Lets try it again. What sound does letters begin with?</i>									
<input type="checkbox"/>	<input type="checkbox"/>	2. Responds to correct and incorrect responses as directed.								
<input type="checkbox"/>	<input type="checkbox"/>	3. Holds clipboard and stopwatch so child cannot see what (s)he records.								
<input type="checkbox"/>	<input type="checkbox"/>	4. Starts the stopwatch immediately after presenting the question and stops the stopwatch as soon as child responds.								
<input type="checkbox"/>	<input type="checkbox"/>	5. Points to each picture while saying its name.								
<input type="checkbox"/>	<input type="checkbox"/>	6. Moves through pictures and questions promptly and clearly.								
<input type="checkbox"/>	<input type="checkbox"/>	7. Marks correct responses as 1, incorrect responses as 0.								
<input type="checkbox"/>	<input type="checkbox"/>	8. If child does not respond in 5 seconds, scores question as 0 and present next question.								
<input type="checkbox"/>	<input type="checkbox"/>	9. Follows discontinue rule if child has a score of 0 after first 5 questions. Records score of 0.								
<input type="checkbox"/>	<input type="checkbox"/>	10. Uses correction procedure if child did examples correctly but does not answer correctly: Remember to point/tell me a picture that begins with the sound (stimulus sound).								
<input type="checkbox"/>	<input type="checkbox"/>	11. Records the cumulative time from the stopwatch in seconds.								
<input type="checkbox"/>	<input type="checkbox"/>	12. Records the number of correct responses.								
<input type="checkbox"/>	<input type="checkbox"/>	13. Shadow score with the examiner. Is he/she within 1 point on the number of correct responses and within 2 seconds on the total time?								
<input type="checkbox"/>	<input type="checkbox"/>	14. Calculates score correctly: $ISF = \frac{60 \times \text{Number Correct}}{\text{Seconds}}$								

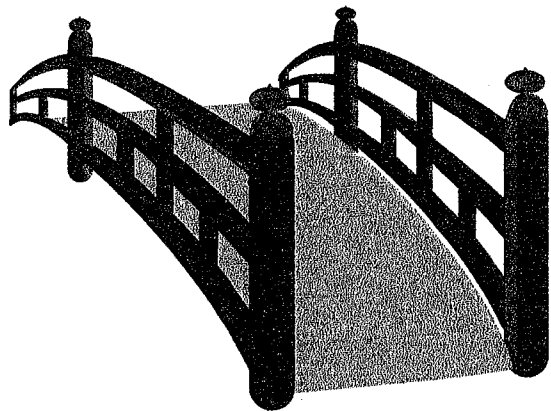
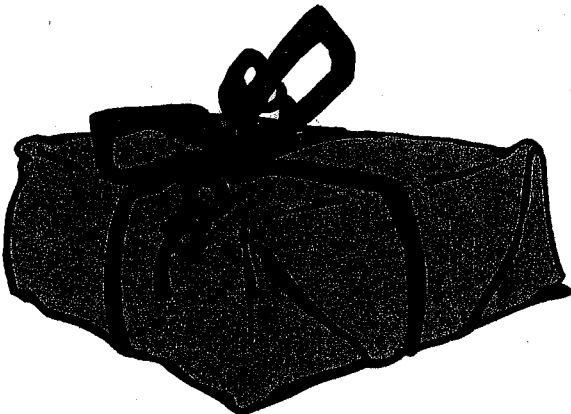
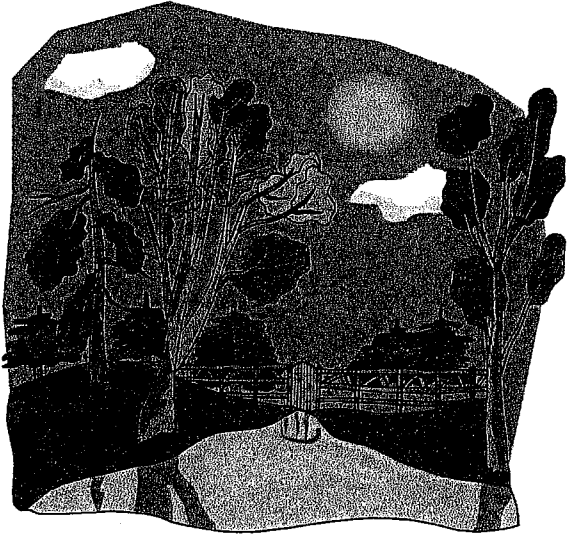


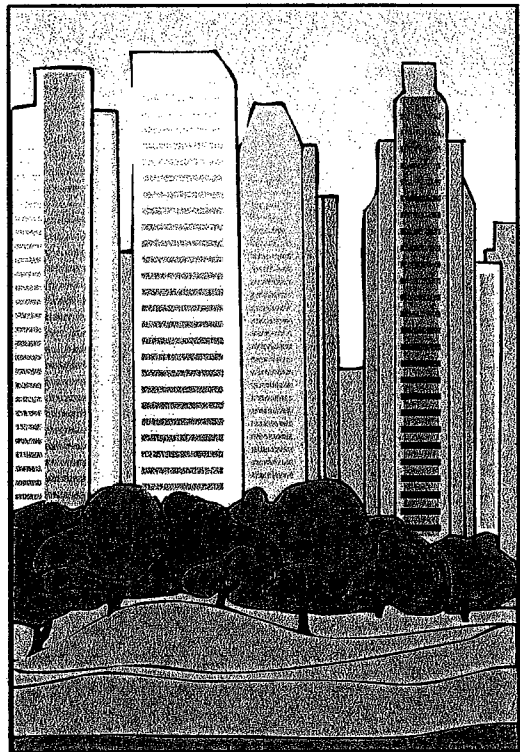
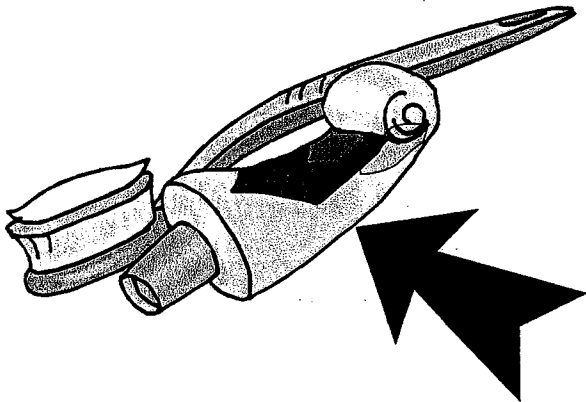
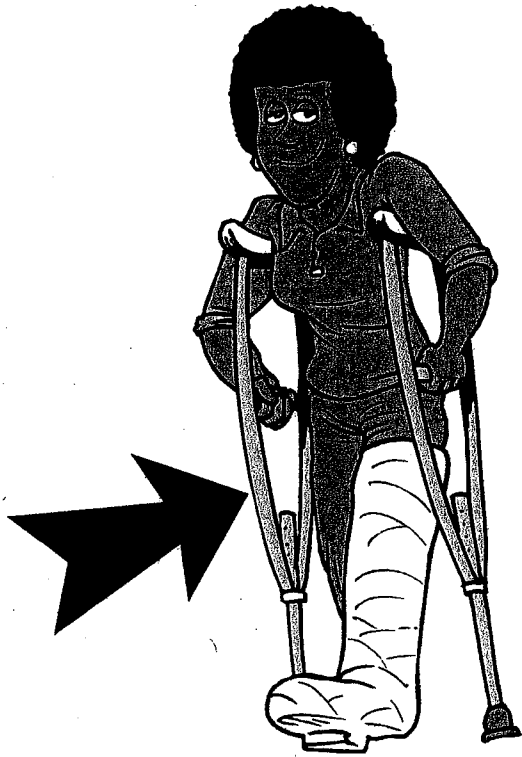


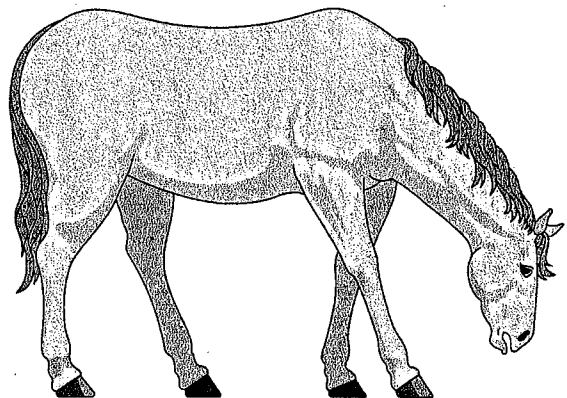
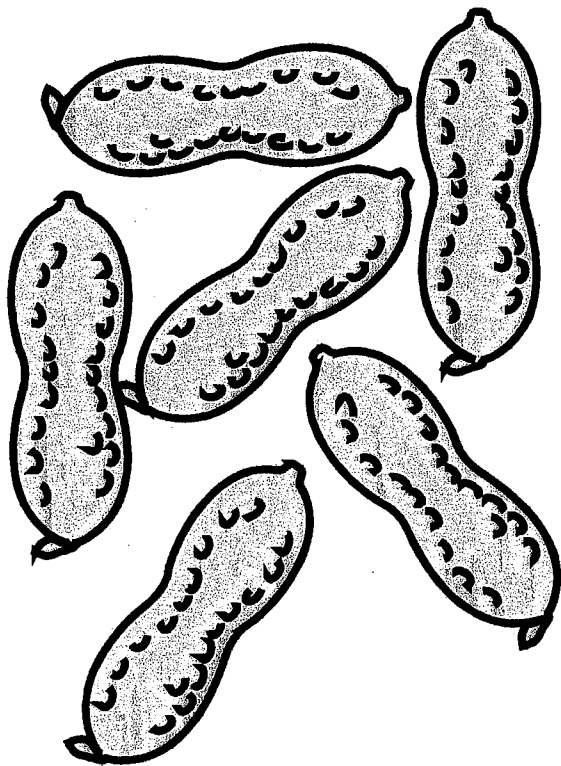
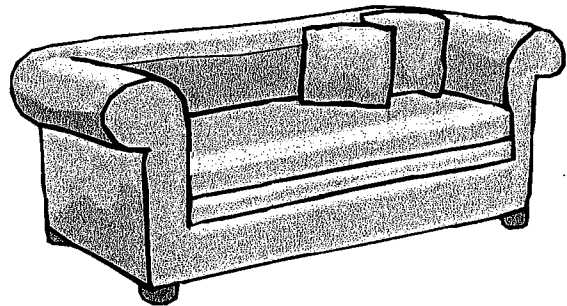


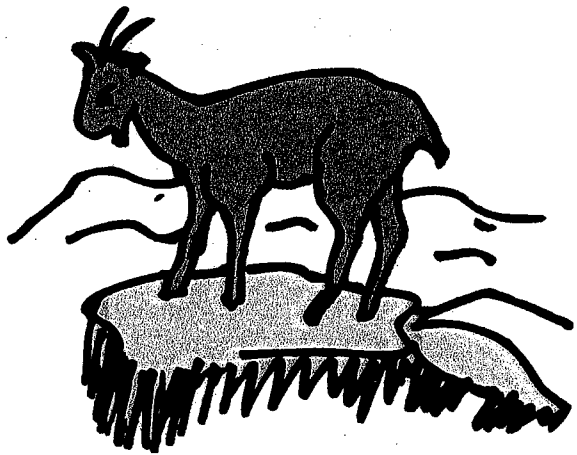
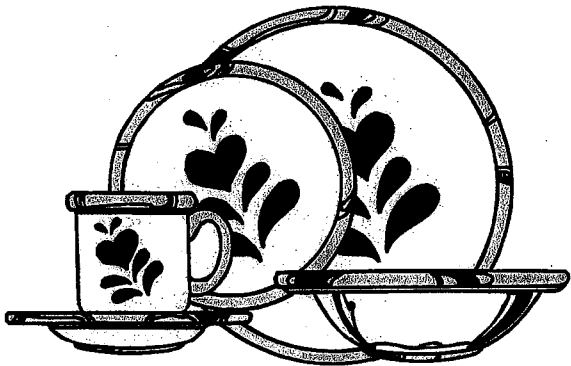
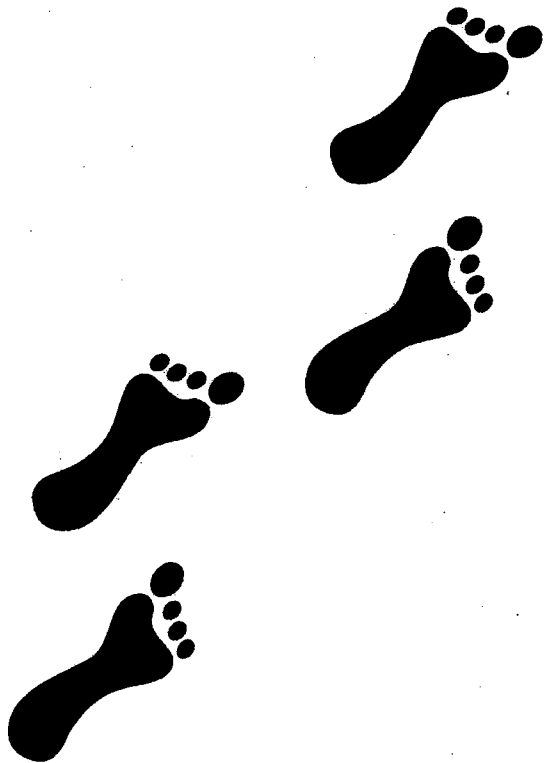
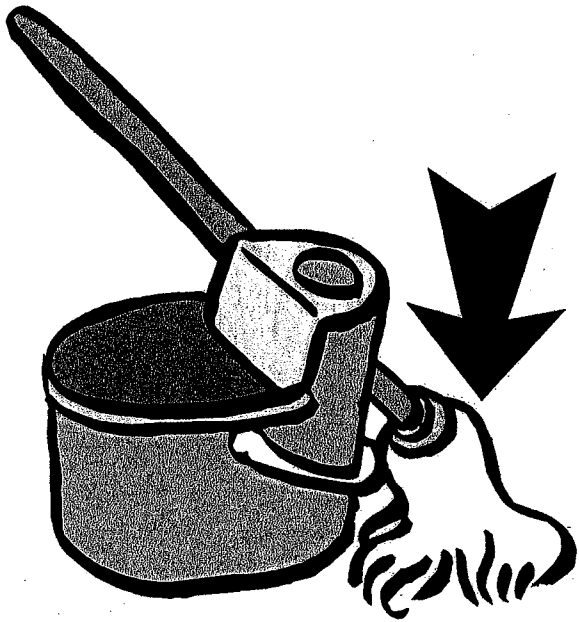












Benchmark K-1
DIBELS™ Initial Sound Fluency

This is tomato, cub, plate, doughnut (point to pictures).

1. Which picture begins with /d/? 0 1
2. Which picture begins with /t/? 0 1
3. Which picture begins with /k/? 0 1
4. What sound does "plate" begin with? 0 1

This is bump, insect, refrigerator, skate (point to pictures).

5. Which picture begins with /sk/? 0 1
6. Which picture begins with /r/? 0 1
7. Which picture begins with /b/? 0 1
8. What sound does "insect" begin with? 0 1

This is rooster, mule, fly, soap (point to pictures).

9. Which picture begins with /r/? 0 1
10. Which picture begins with /fl/? 0 1
11. Which picture begins with /s/? 0 1
12. What sound does "mule" begin with? 0 1

This is pliers, doctor, quilt, beetle (point to pictures).

13. Which picture begins with /b/? 0 1
14. Which picture begins with /pl/? 0 1
15. Which picture begins with /d/? 0 1
16. What sound does "quilt" begin with? 0 1

Time: _____ Seconds Total Correct: _____

$60 \times \text{Total Correct} = \text{Correct Initial Sounds per Minute}$
Seconds

Benchmark K-2
DIBELS™ Initial Sound Fluency

This is yard, giraffe, present, bridge (point to pictures).

1. Which picture begins with /y/? 0 1
2. Which picture begins with /j/? 0 1
3. Which picture begins with /pr/? 0 1
4. What sound does "bridge" begin with? 0 1

This is crutches, feather, toothpaste, city (point to pictures).

5. Which picture begins with /s/? 0 1
6. Which picture begins with /f/? 0 1
7. Which picture begins with /t/? 0 1
8. What sound does "crutches" begin with? 0 1

This is dime, sofa, peanuts, horse (point to pictures).

9. Which picture begins with /h/? 0 1
10. Which picture begins with /s/? 0 1
11. Which picture begins with /d/? 0 1
12. What sound does "peanuts" begin with? 0 1

This is mop, footprints, dishes, goat (point to pictures).

13. Which picture begins with /m/? 0 1
14. Which picture begins with /f/? 0 1
15. Which picture begins with /g/? 0 1
16. What sound does "dishes" begin with? 0 1

Time: _____ Seconds Total Correct: _____

$60 \times \text{Total Correct} = \text{Correct Initial Sounds per Minute}$
Seconds

**DIBELS™ Initial Sound Fluency
Assessment Integrity Checklist**

Directions: As the observer, please observe setup and directions, time and score the test with the examiner, check examiner's accuracy in following procedures, and decide if examiner passes or needs more practice.

Fine	Needs Practice	√ box to indicate Fine or Needs Practice								
<input type="checkbox"/>	<input type="checkbox"/>	<p>1. Performs standardized directions verbatim:</p> <p><i>This is mouse, flowers, pillow, letters. Mouse begins with the sound /m/. Listen, /m/ mouse. Which one begins with the sounds /f/?</i></p> <table border="1" style="width: 100%; border-collapse: collapse;"> <thead> <tr> <th style="width: 50%;">CORRECT RESPONSE</th> <th style="width: 50%;">INCORRECT RESPONSE</th> </tr> </thead> <tbody> <tr> <td><i>Good. Flowers begins with the sounds /f/.</i></td> <td><i>Flowers begins with the sounds /f/ (point to flowers). Listen, /f/ flowers. Lets try it again. Which one begins with the sounds /f/?</i></td> </tr> </tbody> </table> <p><i>Pillow begins with the sound /p/. Listen, /p/ pillow. What sound does letters begins with?</i></p> <table border="1" style="width: 100%; border-collapse: collapse;"> <thead> <tr> <th style="width: 50%;">CORRECT RESPONSE</th> <th style="width: 50%;">INCORRECT RESPONSE</th> </tr> </thead> <tbody> <tr> <td><i>Good. Letters begins with the sound /l/.</i></td> <td><i>Letters begins with the sound /l/. Listen, /l/ letters. Lets try it again. What sound does letters begin with?</i></td> </tr> </tbody> </table>	CORRECT RESPONSE	INCORRECT RESPONSE	<i>Good. Flowers begins with the sounds /f/.</i>	<i>Flowers begins with the sounds /f/ (point to flowers). Listen, /f/ flowers. Lets try it again. Which one begins with the sounds /f/?</i>	CORRECT RESPONSE	INCORRECT RESPONSE	<i>Good. Letters begins with the sound /l/.</i>	<i>Letters begins with the sound /l/. Listen, /l/ letters. Lets try it again. What sound does letters begin with?</i>
CORRECT RESPONSE	INCORRECT RESPONSE									
<i>Good. Flowers begins with the sounds /f/.</i>	<i>Flowers begins with the sounds /f/ (point to flowers). Listen, /f/ flowers. Lets try it again. Which one begins with the sounds /f/?</i>									
CORRECT RESPONSE	INCORRECT RESPONSE									
<i>Good. Letters begins with the sound /l/.</i>	<i>Letters begins with the sound /l/. Listen, /l/ letters. Lets try it again. What sound does letters begin with?</i>									
<input type="checkbox"/>	<input type="checkbox"/>	2. Responds to correct and incorrect responses as directed.								
<input type="checkbox"/>	<input type="checkbox"/>	3. Holds clipboard and stopwatch so child cannot see what (s)he records.								
<input type="checkbox"/>	<input type="checkbox"/>	4. Starts the stopwatch immediately after presenting the question and stops the stopwatch as soon as child responds.								
<input type="checkbox"/>	<input type="checkbox"/>	5. Points to each picture while saying its name.								
<input type="checkbox"/>	<input type="checkbox"/>	6. Moves through pictures and questions promptly and clearly.								
<input type="checkbox"/>	<input type="checkbox"/>	7. Marks correct responses as 1, incorrect responses as 0.								
<input type="checkbox"/>	<input type="checkbox"/>	8. If child does not respond in 5 seconds, scores question as 0 and present next question.								
<input type="checkbox"/>	<input type="checkbox"/>	9. Follows discontinue rule if child has a score of 0 after first 5 questions. Records score of 0.								
<input type="checkbox"/>	<input type="checkbox"/>	10. Uses correction procedure if child did examples correctly but does not answer correctly: Remember to point/tell me a picture that begins with the sound (stimulus sound).								
<input type="checkbox"/>	<input type="checkbox"/>	11. Records the cumulative time from the stopwatch in seconds.								
<input type="checkbox"/>	<input type="checkbox"/>	12. Records the number of correct responses.								
<input type="checkbox"/>	<input type="checkbox"/>	13. Shadow score with the examiner. Is he/she within 1 point on the number of correct responses and within 2 seconds on the total time?								
<input type="checkbox"/>	<input type="checkbox"/>	14. Calculates score correctly: $ISF = \frac{60 \times \text{Number Correct}}{\text{Seconds}}$								

Pronunciation Guide:

Different regions of the country use different dialects of American English. These pronunciation examples may be modified or distinguished consistent with regional dialects and conventions. See scoring note on Page 12 for clarification.

<u>Phoneme</u>	<u>Phoneme Example</u>	<u>Phoneme</u>	<u>Phoneme Example</u>
/ai/	bait	/th/	thin
/ea/	bead	/TH/	then
/ie/	tie	/sh/	shed
/oa/	boat	/SH/	measure or beige
/oo/	food	/ch/	chin
/a/	bad	/j/	jam & edge
/e/	bed	/p/	pen
/i/	bid	/t/	tap
/o/	cod or law	/k/	can
/u/	bud and “a” in about	/b/	bat
/uu/	good	/d/	dad
/ow/	cow	/g/	gun or frog
/oi/	noise or point	/m/	man or jam
/ar/	(1 phoneme) car	/n/	nap
/ir/	(1 phoneme) bird	/ng/	sing
/or/	(1 phoneme) for	/f/	fat
/ai/ /r/	(2 phonemes) chair	/v/	van
/ea/ /r/	(2 phonemes) clear	/s/	sit
/oo/ /r/	(2 phonemes) tour	/z/	zoo
		/r/	rat or frog
		/l/	lap
		/w/	wet
		/h/	hot
		/y/	yell

5. **Correct Initial Consonant Sound:** If the word starts with an initial consonant sound, the child can respond with the first sound or initial sounds. For example, if the word is “clock” a correct initial sound would be /c/ or /cl/ or /klo/ but not /l/ or “clock.”

PROMPT:	STUDENT SAYS:	SCORE:
What sound does “clock” begin with?	/k/	0 (1)
What sound does “clock” begin with?	/kl/	0 (1)
What sound does “clock” begin with?	/klo/	0 (1)
What sound does “clock” begin with?	/l/	(0) 1
What sound does “clock” begin with?	“clock”	(0) 1

6. **Correct Initial Vowel Sound:** If the word starts with an initial vowel sound, the child can respond with the initial vowel sound or initial sounds. For example, if the word is “elephant” a correct initial sound would be /e/ or /el/ or /ele/, but not the name of the letter /ea/.

PROMPT:	STUDENT SAYS:	SCORE:
What sound does “elephant” begin with?	/e/	0 (1)
What sound does “elephant” begin with?	/el/	0 (1)
What sound does “elephant” begin with?	/ea/	(0) 1
What sound does “elephant” begin with?	/ele/	0 (1)

7. Schwa sound (/u/) added to a consonant is not counted as an error. Some phonemes cannot be pronounced correctly in isolation without a vowel, and some early learning of sounds includes the schwa.

PROMPT:	STUDENT SAYS:	SCORE:
What sound does “clock” begin with?	/ku/	0 (1)
What sound does “clock” begin with?	/klu/	0 (1)

8. **Articulation Difficulty:** The student is not penalized for imperfect pronunciation due to dialect, articulation, or second language interference. For example, the student responds /th/ when asked for the first sound in “sink.” If the student consistently says /th/ for /s/, as in “thircle” for “circle,” he or she should be given credit for a correct initial sound. This is a professional judgment and should be based on the student’s responses and any prior knowledge of his/her speech patterns.

PROMPT:	STUDENT SAYS:	SCORE:
What sound does “sink” begin with?	/th/	0 (1)

6. As soon as the student responds, present the next question promptly and clearly. Begin your stopwatch after you have said the question, and stop it as soon as the student responds, as above.
7. Score the child’s response as either correct (1 point) or incorrect (0 points).
8. If the child stops or struggles with a question for 5 seconds, score the question as zero and present the next question.
9. After the first 4 questions, proceed to the next page of student probe pictures. Continue until the end of the questions. When the child finishes the last question, record the total time on your stopwatch in seconds and add the number of correct responses. Record the total number correct and the time in seconds on the bottom of the scoring sheet.

10. Calculate the ISF Score using the formula:

$$ISF = \frac{60 \times \text{Number Correct}}{\text{Seconds}}$$

11. **Prompting Rule.** If a child has done the examples correctly and does not answer the questions correctly, say “**Remember to tell me a picture that begins with the sound** (repeat stimulus sound).” This prompt can be given once.

Directions for Scoring

1. **Discontinue Rule.** If a child has a score of 0 on the first five questions, discontinue the probe and give a score of 0.
2. If the child names the correct picture instead of pointing to it, score as correct.

PROMPT:	STUDENT SAYS:	SCORE:
This is pie, letter, flower and mouse. Which picture begins with /p/?	“pie”	0 (1)

3. If the child re-names a picture *and* the name begins with the correct (target) initial sound, score as correct. For example, if the target picture is “hand” for /h/ and the student points at road and says “highway,” score as correct.

PROMPT:	STUDENT SAYS:	SCORE:
This is road, barn, hand and egg. Which picture begins with /h/?	“highway”	0 (1)

4. If the child re-names the picture and the name begins with an incorrect initial sound, score as incorrect. For example, if the target picture is “barn” for /b/ and the student points at barn but says, “house,” score as incorrect.

PROMPT:	STUDENT SAYS:	SCORE:
This is road, barn, hand and egg. Which picture begins with /b/?	“house”	(0) 1

DIBELS™ - Initial Sound Fluency¹
Dynamic Indicators of Basic Early Literacy Skills™ 6th Ed.
University of Oregon

Directions for Administration and Scoring

Target Age Range

Initial Sound Fluency														
Beg	Mid	End	Beg	Mid	End	Beg	Mid	End	Beg	Mid	End	Beg	Mid	End
Preschool			Kindergarten			First Grade			Second Grade			Third Grade		

Initial Sound Fluency is intended for most children from the last year of preschool through the middle of kindergarten. It may be appropriate for monitoring the progress of older children with very low skills in phonological awareness.

Description

DIBELS™ Initial Sound Fluency (ISF) is a standardized, individually administered measure of phonological awareness that assesses a child’s ability to recognize and produce the initial sound in an orally presented word (Kaminski & Good, 1998; Laimon, 1994). The examiner presents four pictures to the child, names each picture, and then asks the child to identify (i.e., point to or say) the picture that begins with the sound produced orally by the examiner. For example, the examiner says, “This is sink, cat, gloves, and hat. Which picture begins with /s/?” and the student points to the correct picture. The child is also asked to orally produce the beginning sound for an orally presented word that matches one of the given pictures. The examiner calculates the amount of time taken to identify/produce the correct sound and converts the score into the number of onsets correct in a minute.

The ISF measure takes about 3 minutes to administer and has over 20 alternate forms to monitor progress. The ISF measure is a revision of the Onset Recognition Fluency (OnRF) measure incorporating minimal revisions. Alternate-form reliability of the OnRF measure is .72 in January of kindergarten (Good, Kaminski, Shinn, Bratten, Shinn, & Laimon, in preparation). By repeating the assessment four times, the resulting average is estimated to have a reliability of .91 (Nunnally, 1978). The concurrent, criterion-related validity of OnRF with DIBELS PSF is .48 in January of kindergarten and .36 with the Woodcock-Johnson Psycho-Educational Battery Readiness Cluster score (Good et al., in preparation). The predictive validity of OnRF with respect to spring-of-first-grade reading on CBM ORF is .45, and .36 with the Woodcock-Johnson Psycho-Educational Battery Total Reading Cluster score (Good et al., in preparation). The

¹ Prior editions were supported, in part, by the Early Childhood Research Institute on Measuring Growth and Development (H180M10006) funded by the U. S. Department of Education, Special Education Programs and Student-Initiated Grant (90CD0819) funded by the U. S. Department of Education, Special Education Programs. The authors acknowledge with appreciation the assistance of Melissa Finch, John Bratten, Nancy Bank, Ambre ReMillard, Diane Hill, Hank Fien, David VanLoo, Rachell Katz, Jennifer Knutson, Scott Baker, Stephanie Vincent, Lisa Habedank Stewart, and Marty Ikeda. Images are modified, published, and distributed by license from Nova Development Corporation (1998).

Good, R. H., Laimon, D., Kaminski, R. A., & Smith, S. (2002). Initial Sound Fluency. In R. H. Good & R. A. Kaminski (Eds.), *Dynamic Indicators of Basic Early Literacy Skills* (6th ed.). Eugene, OR: Institute for the Development of Educational Achievement. Available: <http://dibels.uoregon.edu/>.

benchmark goal is 25 to 35 initial sounds correct by the middle of kindergarten. Students scoring below 10 initial sounds correct in the middle of kindergarten may need intensive instructional support.

Materials: Examiner copy of probe, student practice pictures, student probe pictures, clipboard, stopwatch, colored pen.

Directions for Administration

1. Place examiner copy of probe on clipboard and position so that student cannot see what you record.
2. Place the student copy of 4 practice pictures in front of the child.
3. Say these specific directions to the student:

This is mouse, flowers, pillow, letters. (point to each picture while saying its name) *Mouse* (point to mouse) *begins with the sound /m/. Listen, /m/ mouse. Which one begins with the sounds /f/?*

CORRECT RESPONSE: Student points to flowers, you say,	INCORRECT RESPONSE: If student gives any other response, you say,
<i>Good. Flowers begins with the sounds /f/.</i>	<i>Flowers</i> (point to flowers) <i>begins with the sounds /f/. Listen, /f/ flowers. Lets try it again. Which one begins with the sounds /f/?</i>

Pillow (point to pillow) *begins with the sound /p/. Listen, /p/ pillow. What sound does letters* (point to letters) *begin with?*

CORRECT RESPONSE: Student says /l/, you say,	INCORRECT RESPONSE: If student gives any other response, you say,
<i>Good. Letters begins with the sound /l/.</i>	<i>Letters</i> (point to letters) <i>begins with the sound /l/. Listen, /l/ letters. Lets try it again. What sound does letters</i> (point to letters) <i>begin with?</i>

Here are some more pictures. Listen carefully to the words.

4. Show the child the first page of student probe pictures. Point to each picture and say the name following the standardized directions.
5. Present the first question as written on the score sheet. After you finish asking the question, begin your stopwatch. Stop your stopwatch as soon as the child responds. If the child does not respond after 5 seconds, score the question as zero and present the next question.