

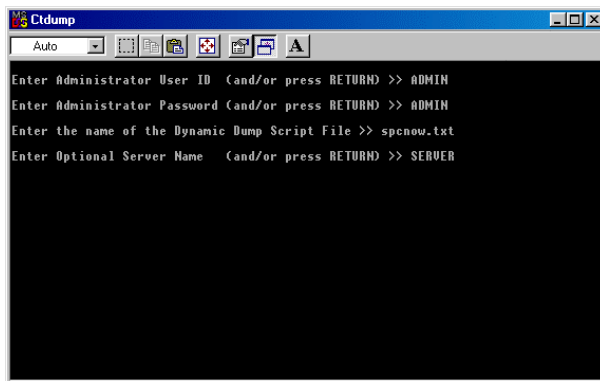
10

Backup

About the Ctdump window	424
About the Ctrdmp window.....	425

About the Ctdump window

In the Ctdump window, you can back up your Spectrum data immediately. Ctdump is a DOS program that you start by double-clicking the Ctdump.exe file in your Spectrum Server directory.



CTDUMP window

Here you enter your Administrator User ID, Administrator Password, the name of the Dynamic Dump Script File, and the Spectrum Server name.

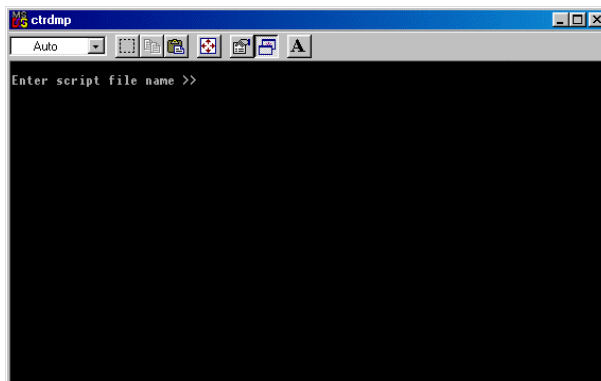
The following table describes the elements in the Ctdump window.

Element	Description
Administration User ID	The name of the Spectrum Server administration user. The default is ADMIN (all caps).
Administrator Password	The administrator password for Spectrum Server. The default is ADMIN (all caps).
Dynamic Dump Script File	The backup script that runs the Ctdump program immediately, spcnov.txt.
Optional Server Name	The name of the Spectrum Server. The default name is SERVER (all caps). <i>Note:</i> You can identify the server name by double-clicking the ctrsvr.cfg file in the Spectrum Server folder and viewing the name that follows the SERVER_NAME command.

For more information on backing up data, see "Backing up using the Ctdump program" in the *Backup* chapter of the *Spectrum CIRC/CAT User Manual*.

About the Ctrdmp window

In the Ctrdmp window, you restore Spectrum backups that were made using the Ctdump program. Ctrdmp is a DOS program that you start by double-clicking the Ctrdmp.exe file in your Spectrum Server\Backup directory.



CTRDMP window

Here you must enter the name of script file that you used to make the backup.

The following table describes the elements in the Ctrdmp window.

Element	Description
Script File Name	The restore script file that is equivalent to the backup script file used to make the backup in the first place (for example, if you used spcdaily.txt to back up, enter resdaily.txt here). The script file can be reswkly.txt, resdaily.txt, or resnow.txt.

For more information on restoring data, see "Restoring backup data using Ctrdmp" in the *Backup* chapter of the *Spectrum CIRC/CAT User Manual*.

