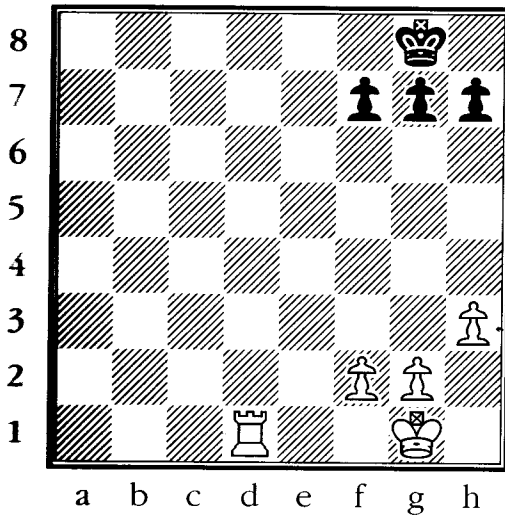
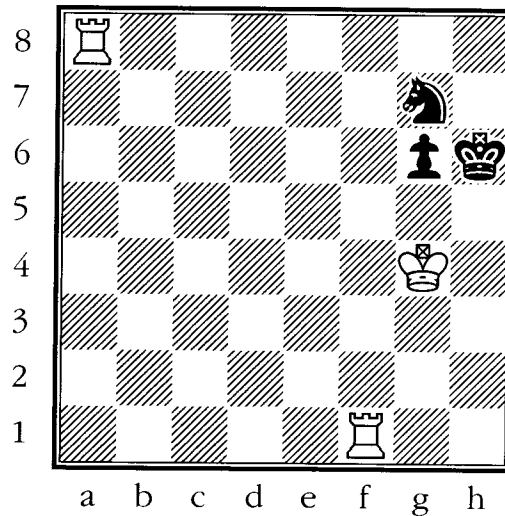


MATE IN ONE PRACTICE—ROOKS

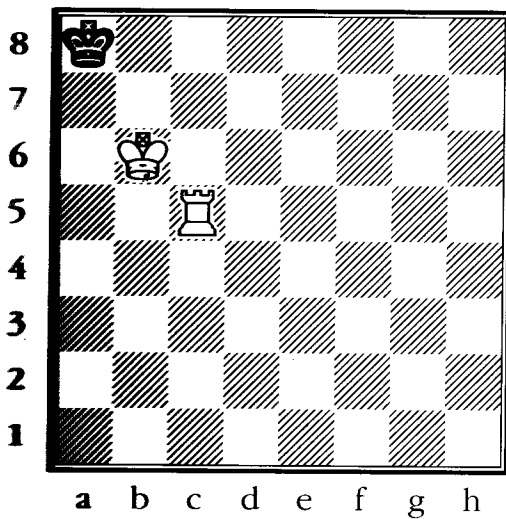
Draw an arrow, or use chess notation, to show how White can checkmate in one move.



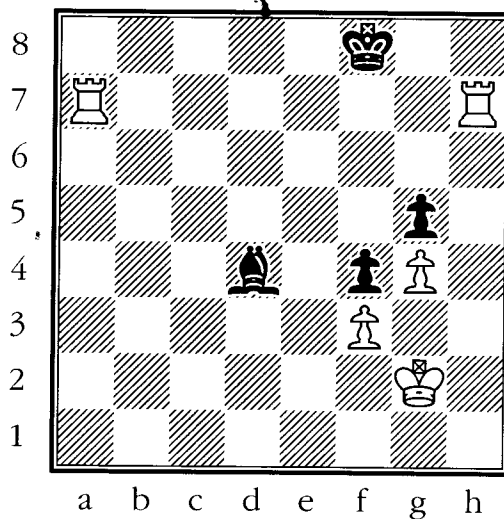
#1



#2



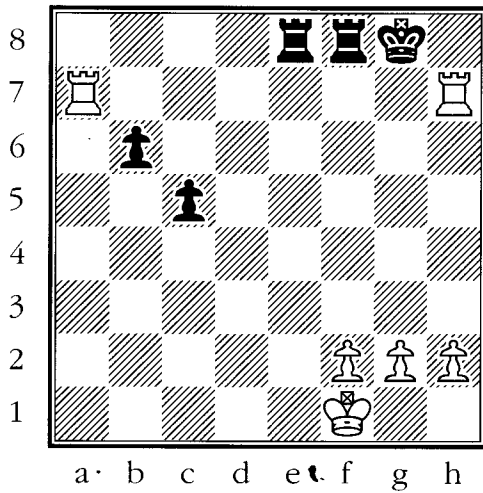
#3



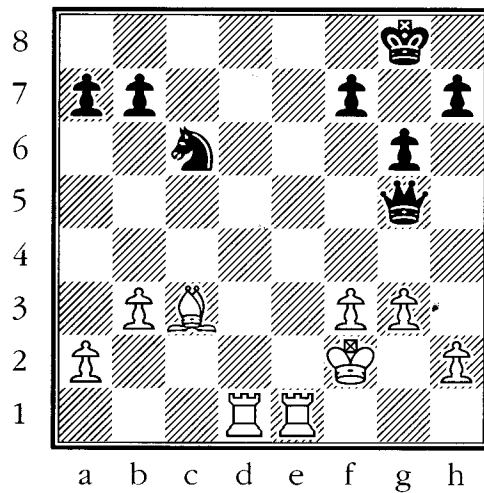
#4

Mate In One Practice—Rooks

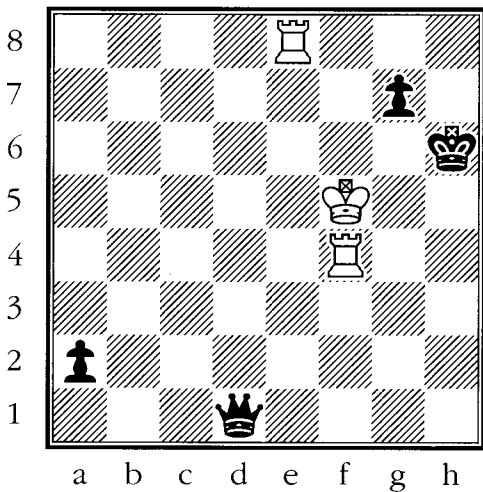
Draw an arrow, or use chess notation, to show how White can checkmate in one move.



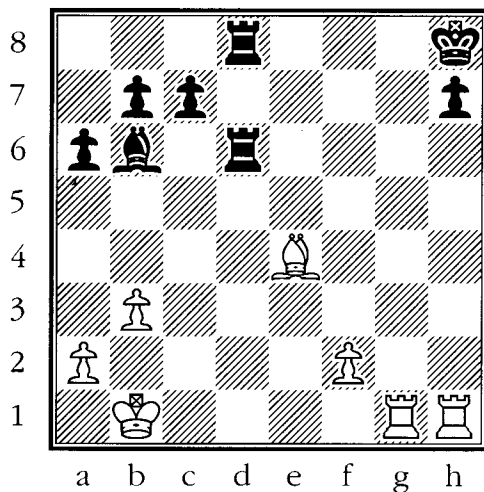
#5



#6



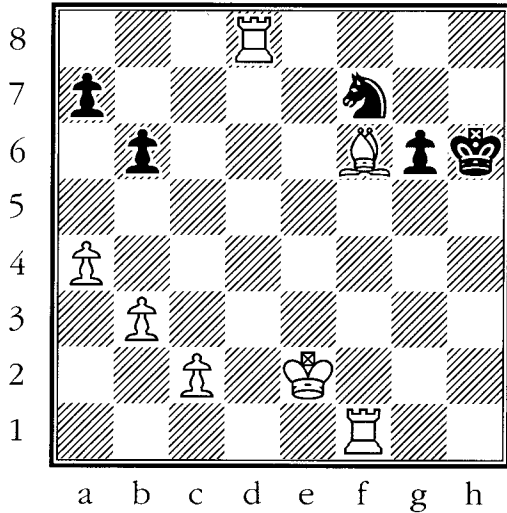
#7



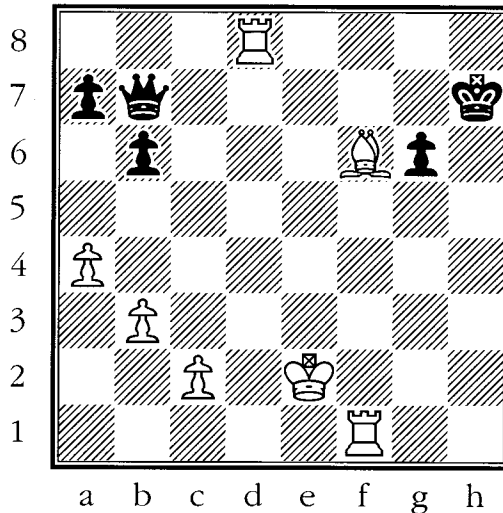
#8

Mate In One Practice—Rooks

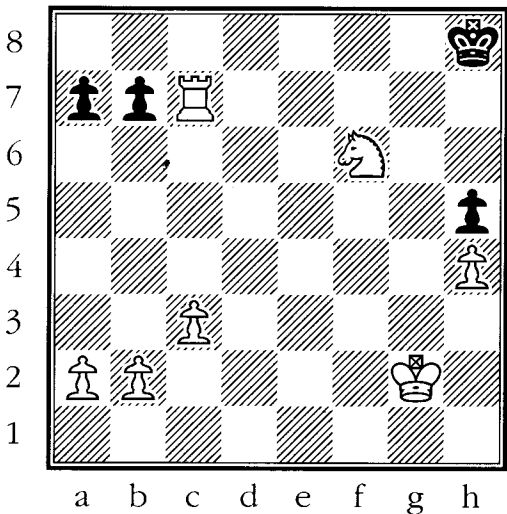
Draw an arrow, or use chess notation, to show how White can checkmate in one move.



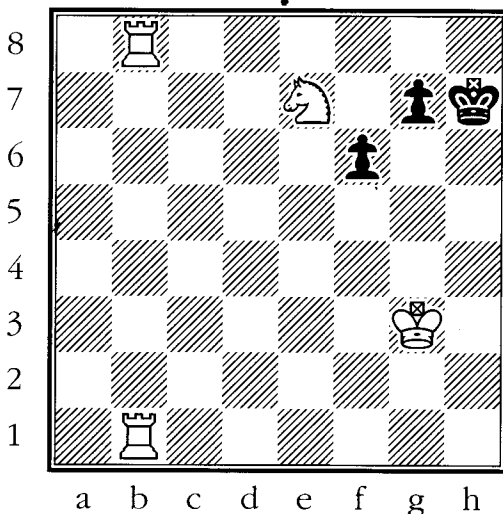
#9



#10



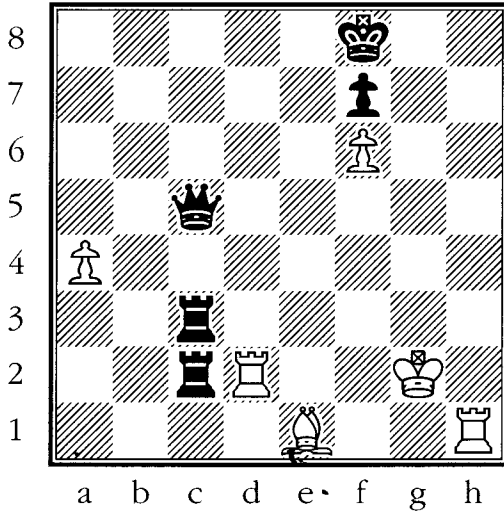
#11



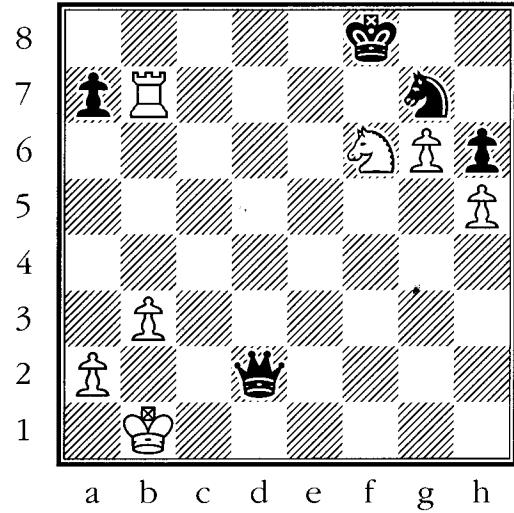
#12

MATE IN ONE PRACTICE—ROOKS

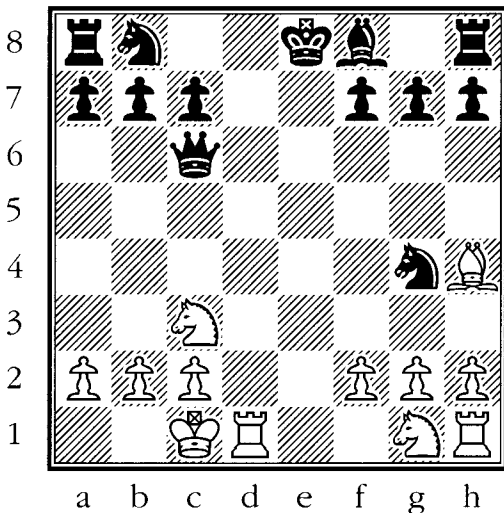
Draw an arrow, or use chess notation, to show how White can checkmate in one move.



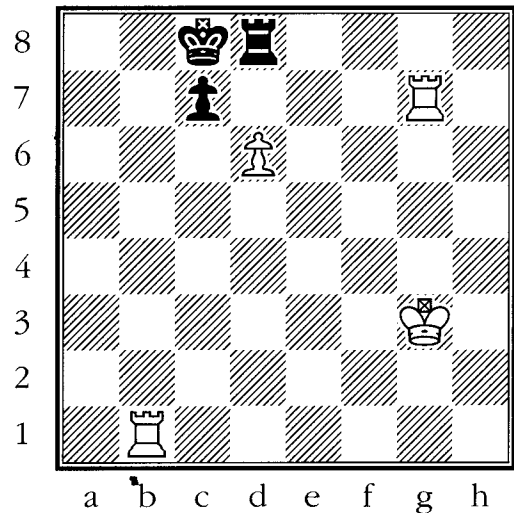
#13



#14



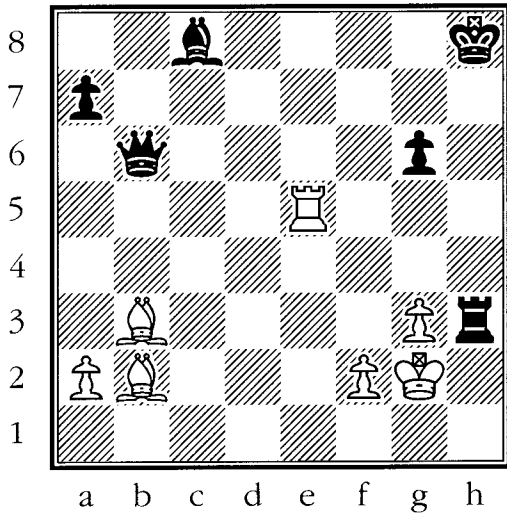
#15



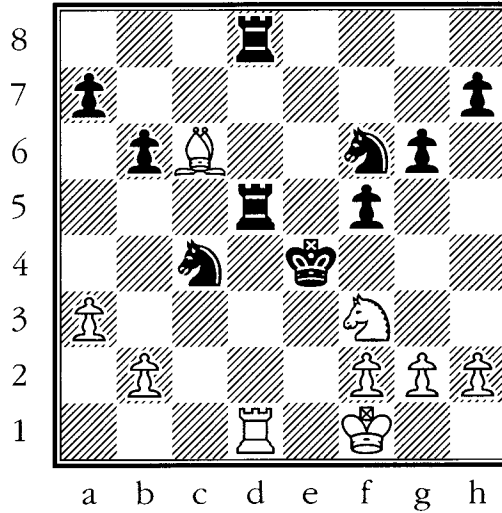
#16

Mate In One Practice—Rooks

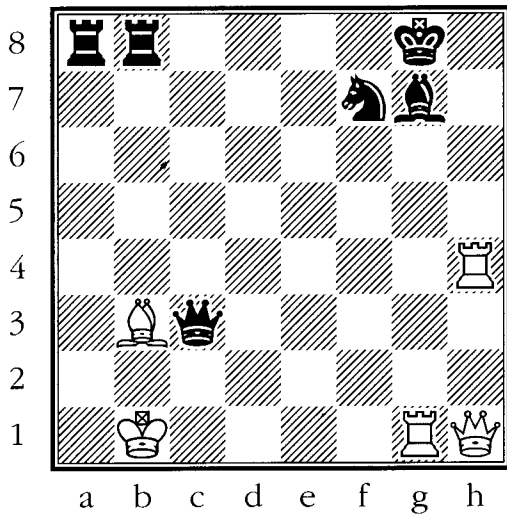
Draw an arrow, or use chess notation, to show how White can checkmate in one move.



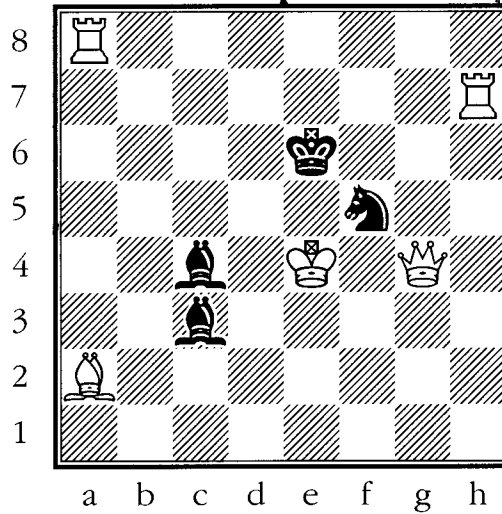
#17



#18



#19

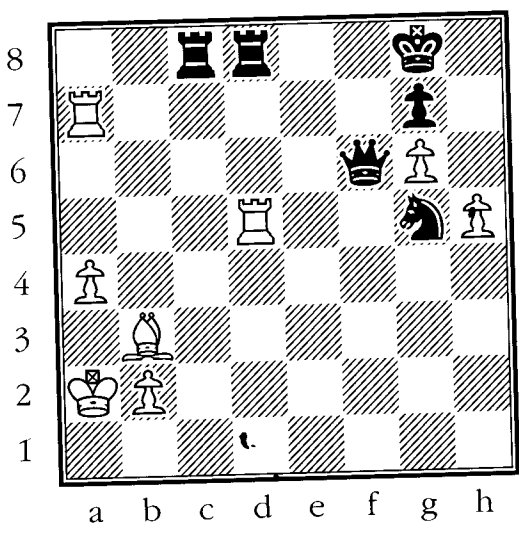


#20

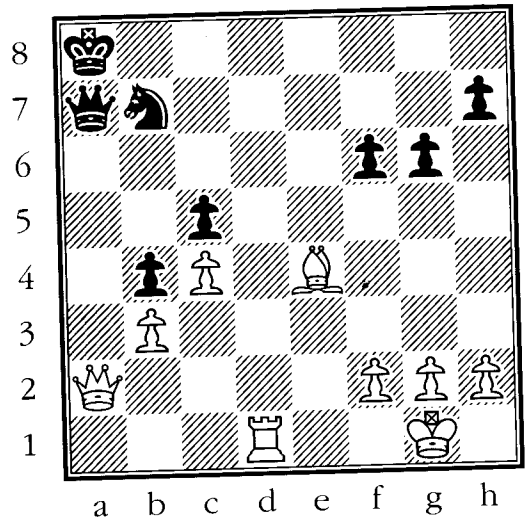
H

Mate In One Practice—Rooks

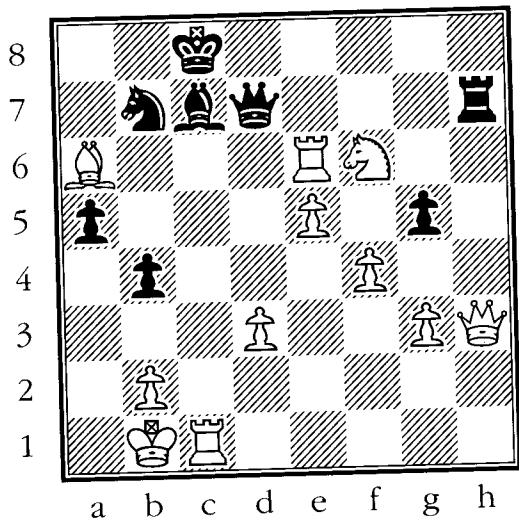
Draw an arrow, or use chess notation, to show how White can checkmate in one move.



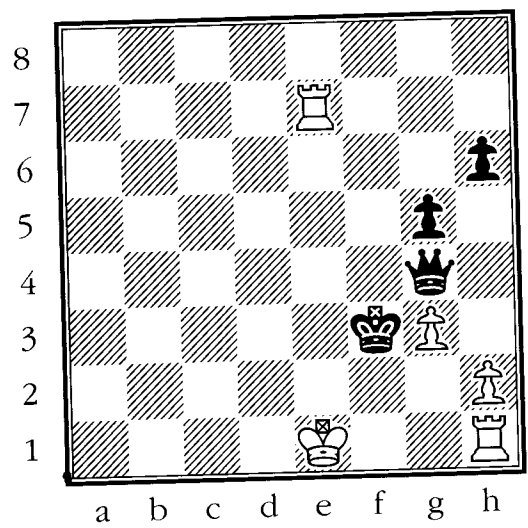
#21



#22



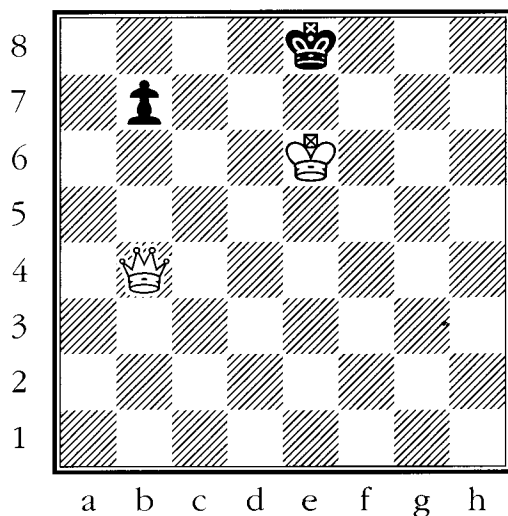
#23



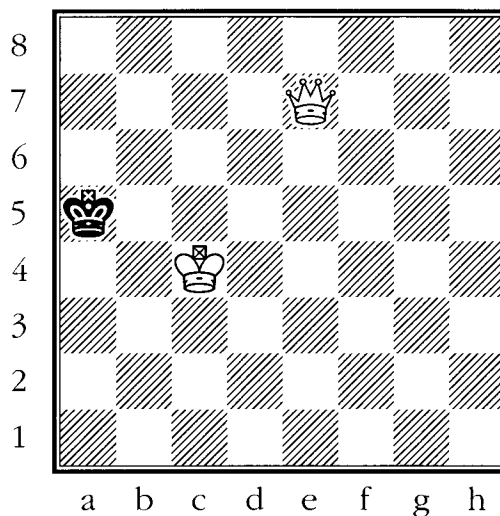
#24

MATE IN ONE PRACTICE—THE QUEEN

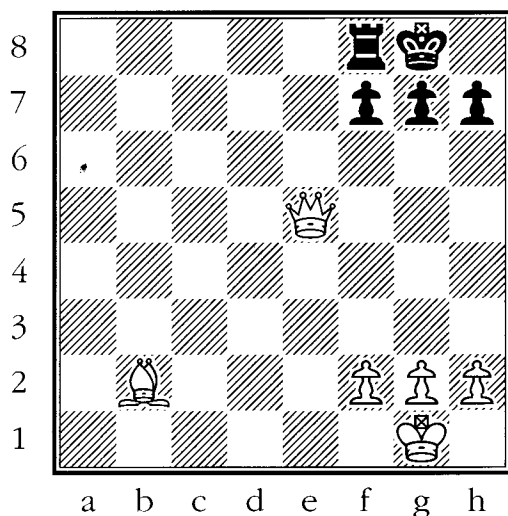
Draw an arrow, or use chess notation, to show how White can checkmate in one move.



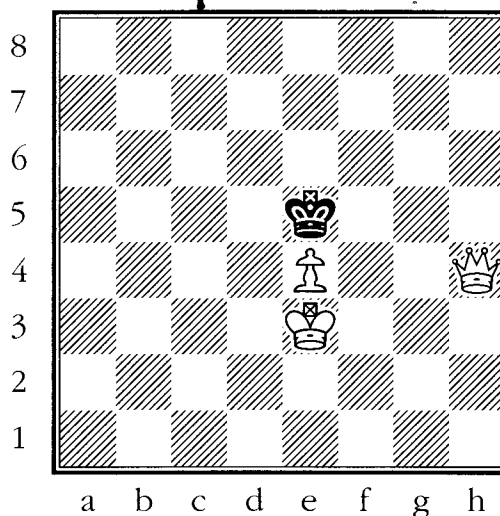
#25



#26



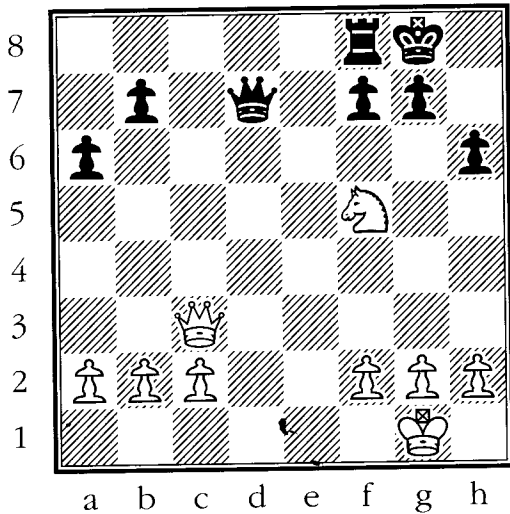
#27



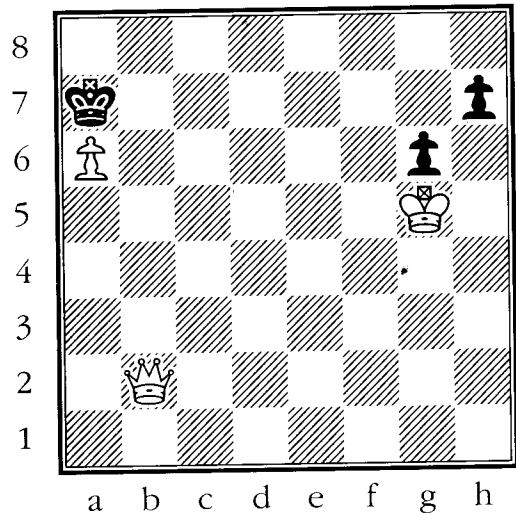
#28

Mate in One Practice—The Queen

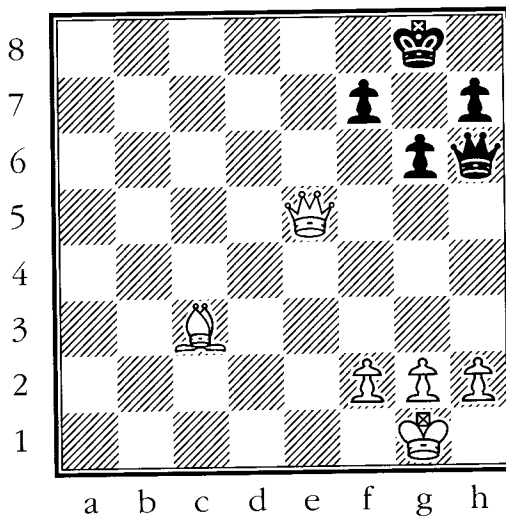
Draw an arrow, or use chess notation, to show how White can checkmate in one move.



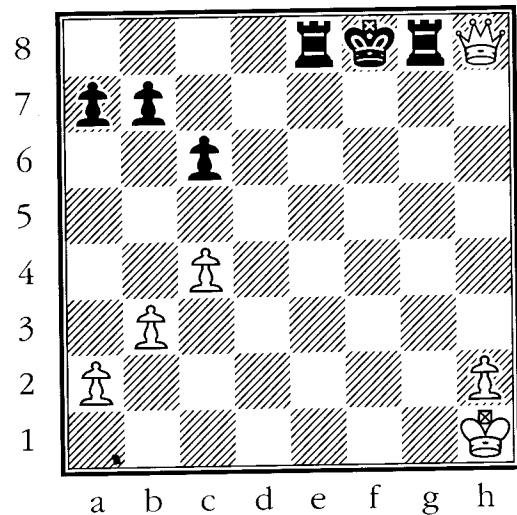
#29



#30



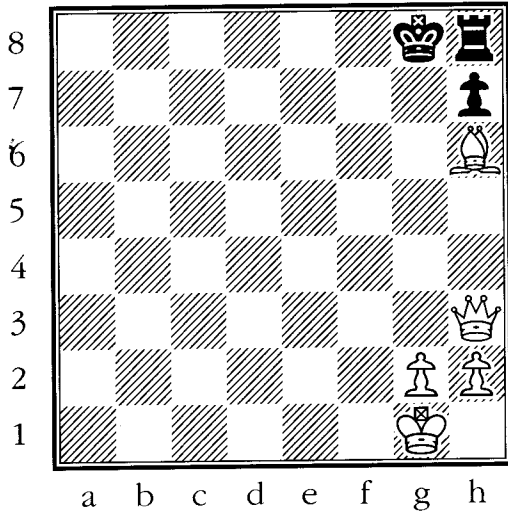
#31



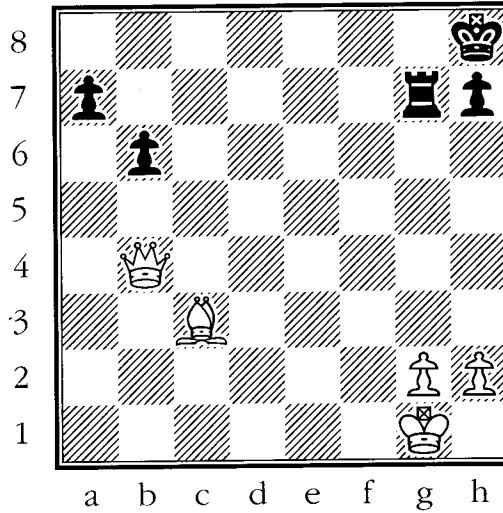
#32

Mate in One Practice—The Queen

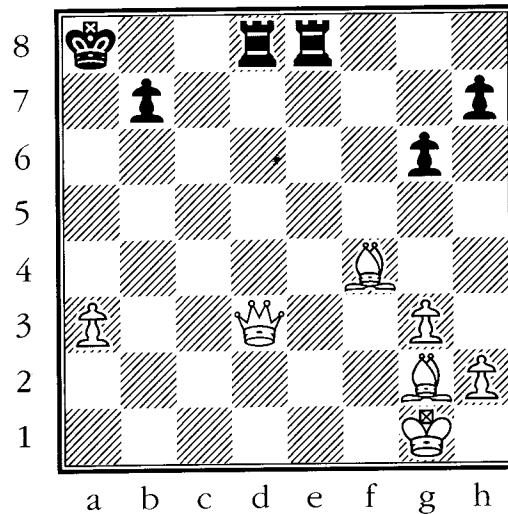
Draw an arrow, or use chess notation, to show how White can checkmate in one move.



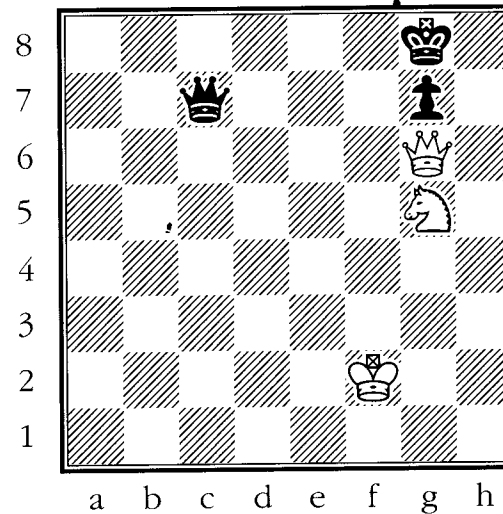
#33



#34



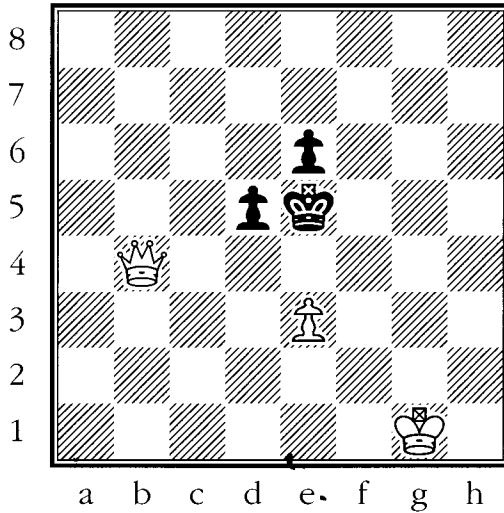
#35



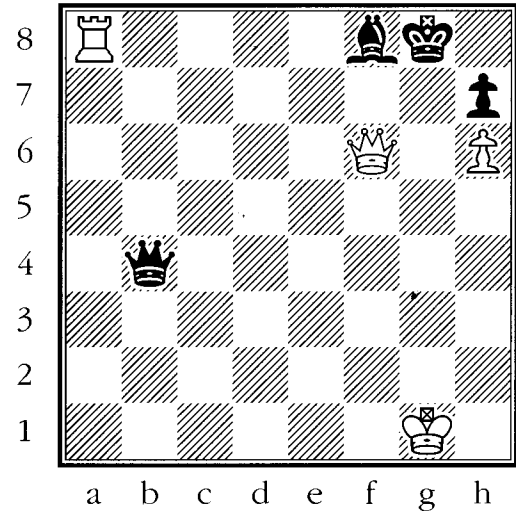
#36

Mate in One Practice—The Queen

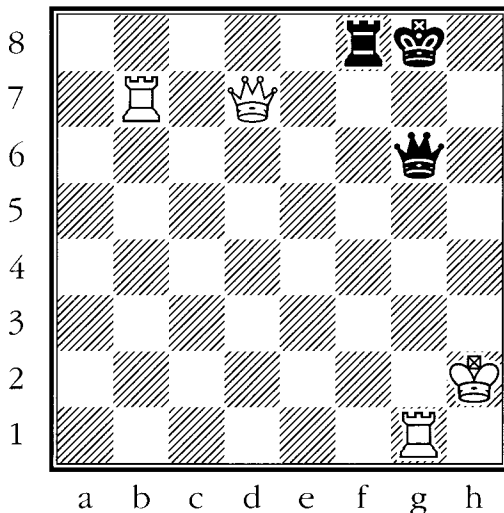
Draw an arrow, or use chess notation, to show how White can checkmate in one move.



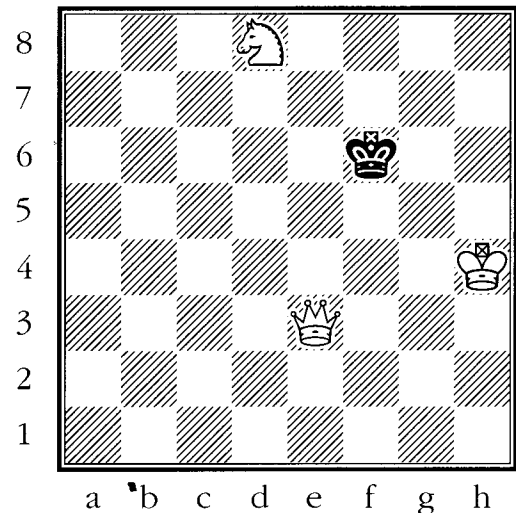
#37



#38



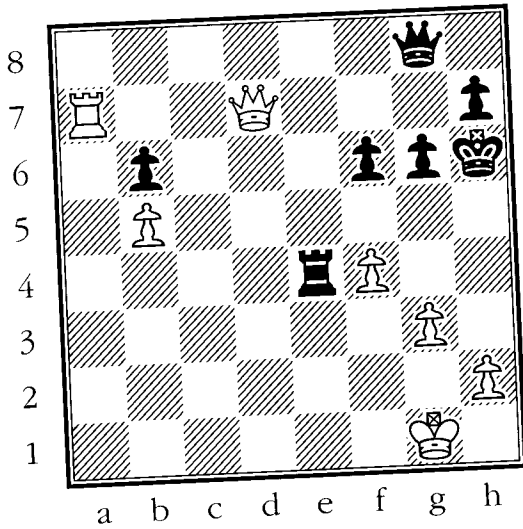
#39



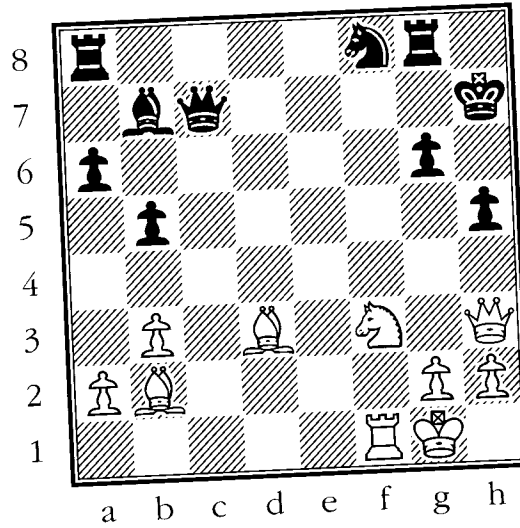
#40

Mate in One Practice—The Queen

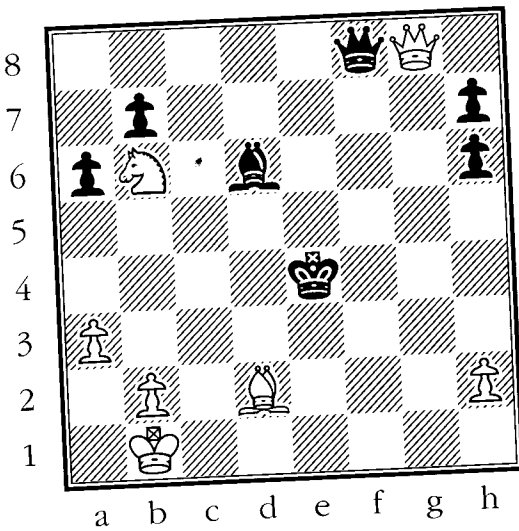
Draw an arrow, or use chess notation, to show how White can checkmate in one move.



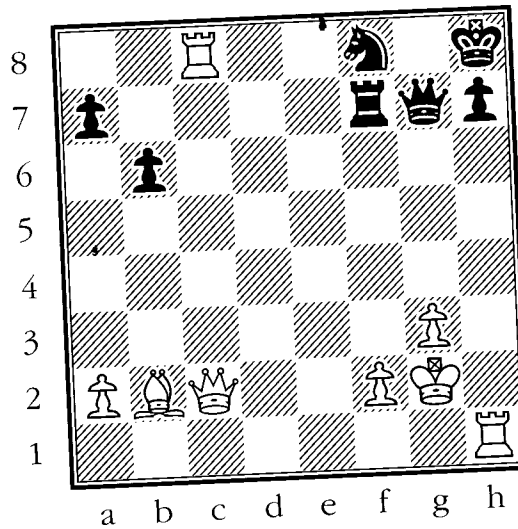
#41



#42



#43

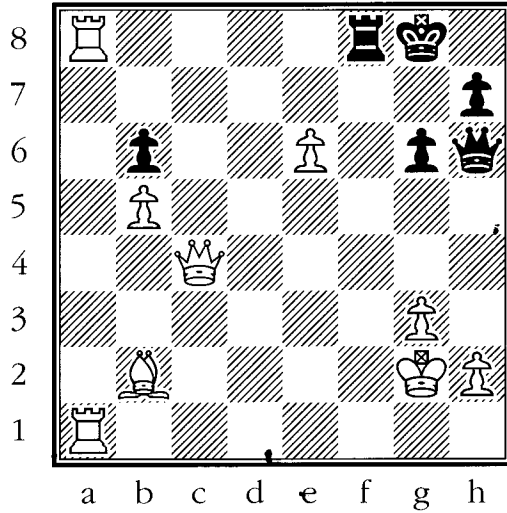


#44

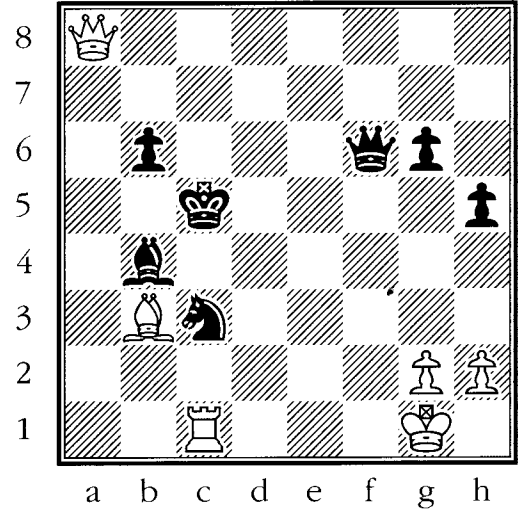
H

Mate in One Practice—The Queen

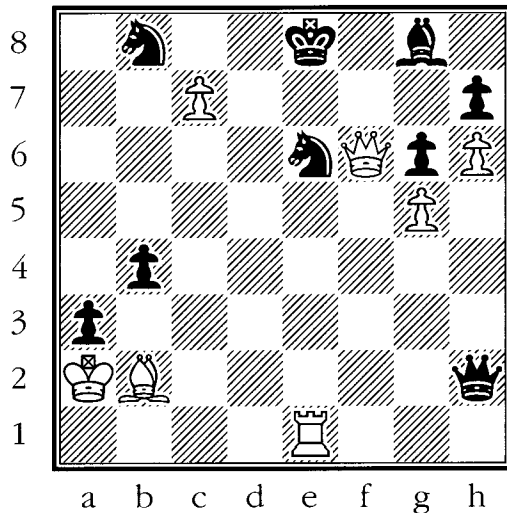
Draw an arrow, or use chess notation, to show how White can checkmate in one move.



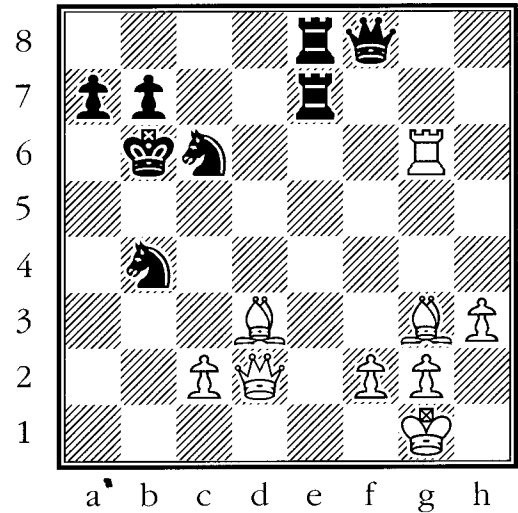
#45



#46



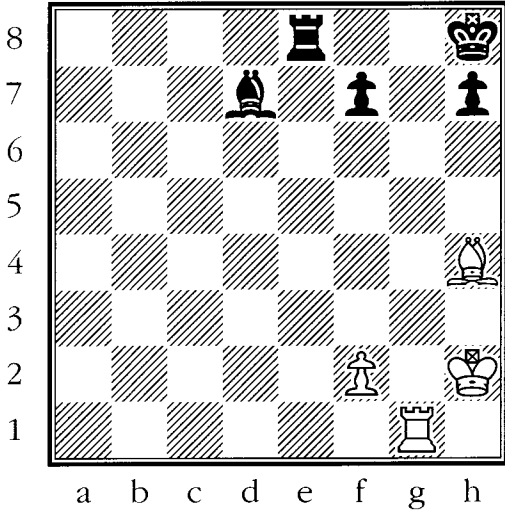
#47



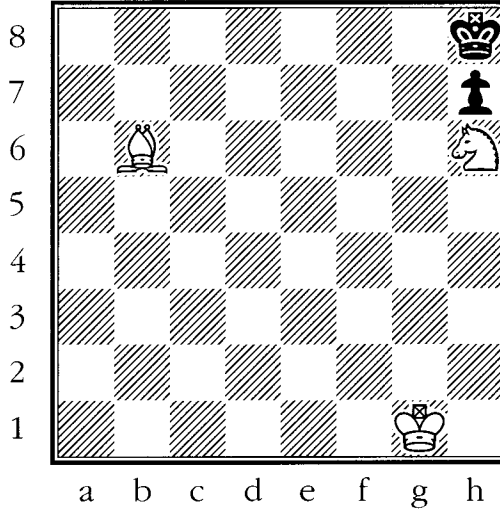
#48

MATE IN ONE PRACTICE—BISHOPS

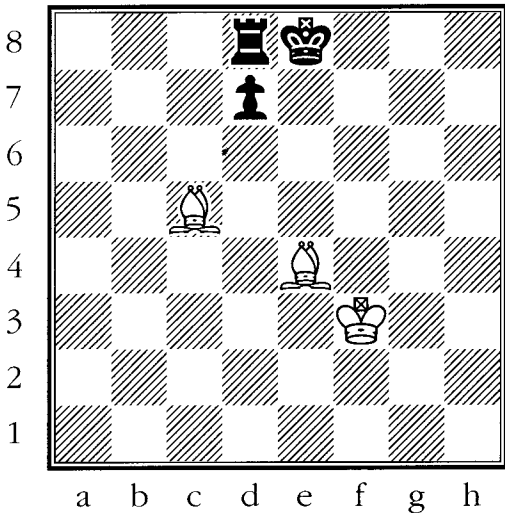
Draw an arrow, or use chess notation, to show how White can checkmate in one move.



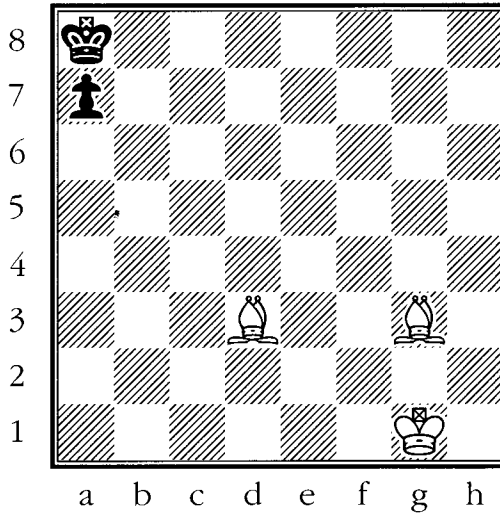
#49



#50



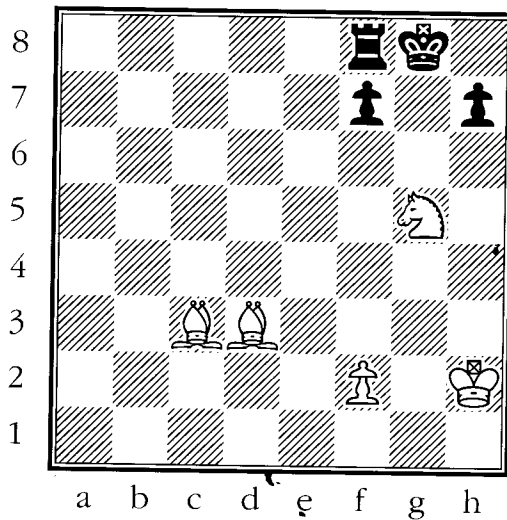
#51



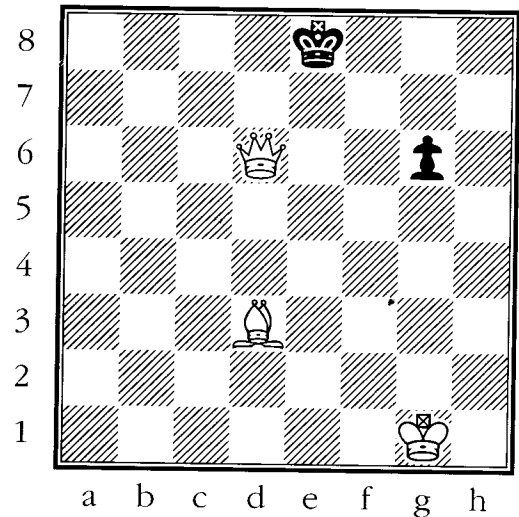
#52

Mate In One Practice—Bishops

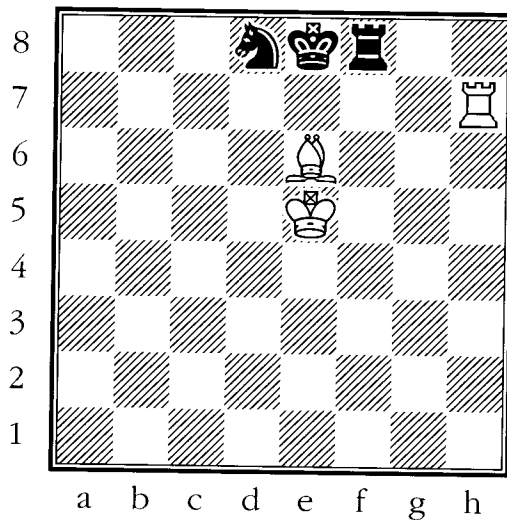
Draw an arrow, or use chess notation, to show how White can checkmate in one move.



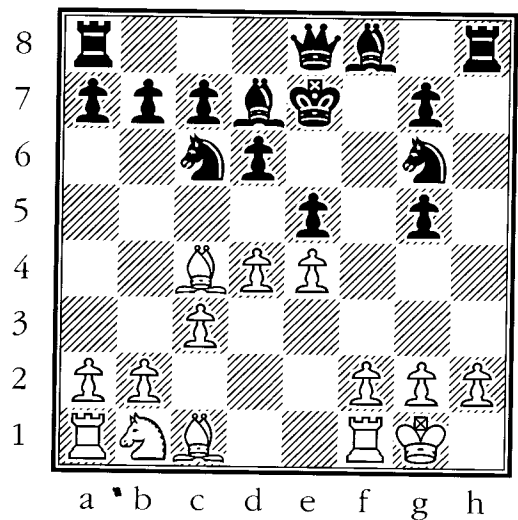
#53



#54



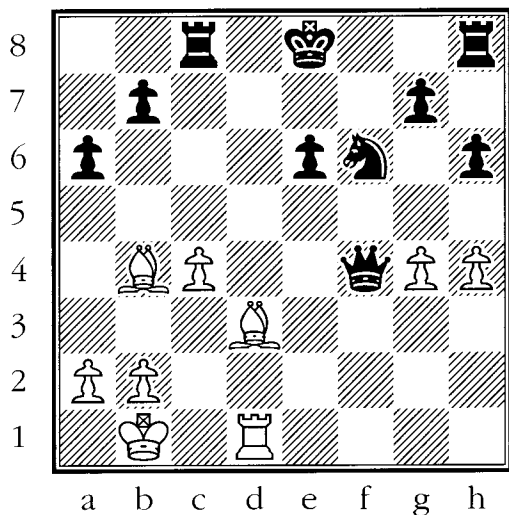
#55



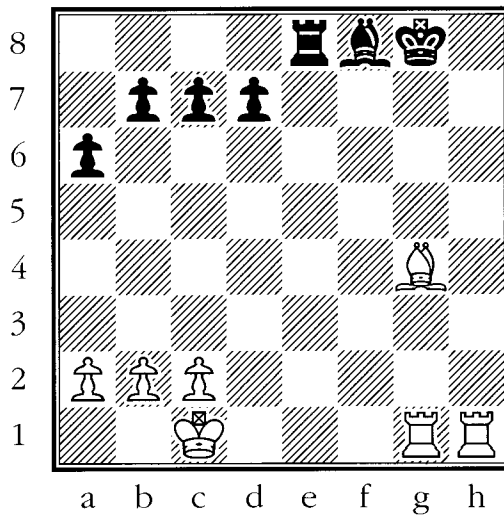
#56

Mate In One Practice—Bishops

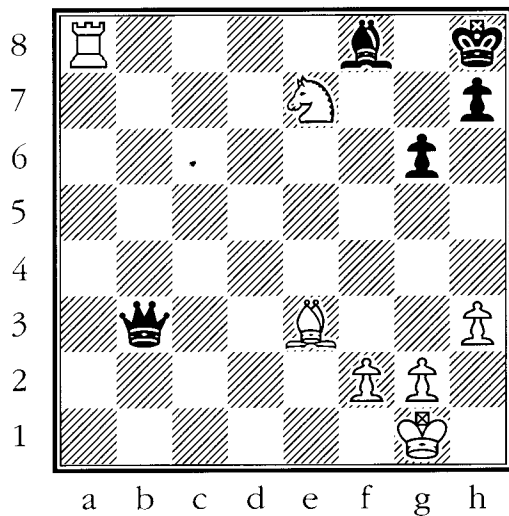
Draw an arrow, or use chess notation, to show how White can checkmate in one move.



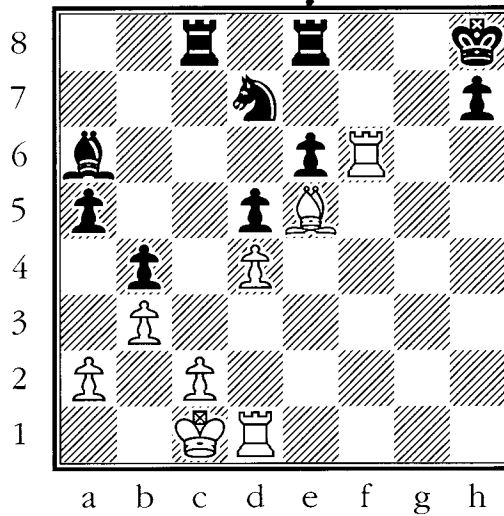
#57



#58



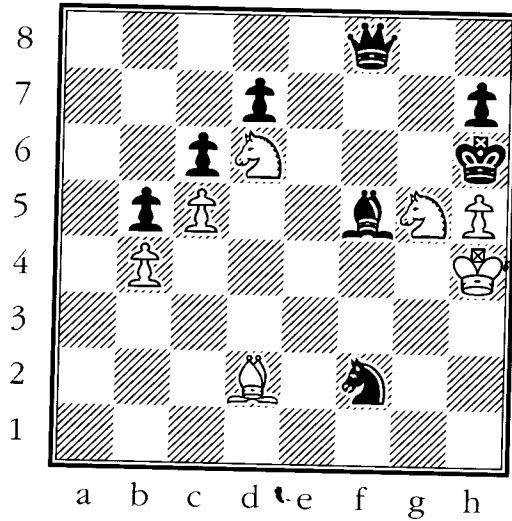
#59



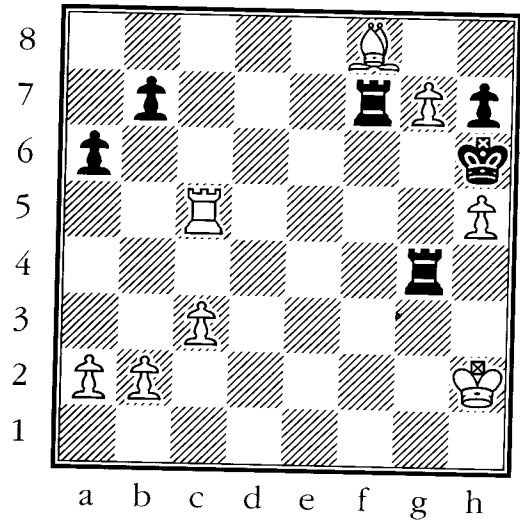
#60

Mate In One Practice—Bishops

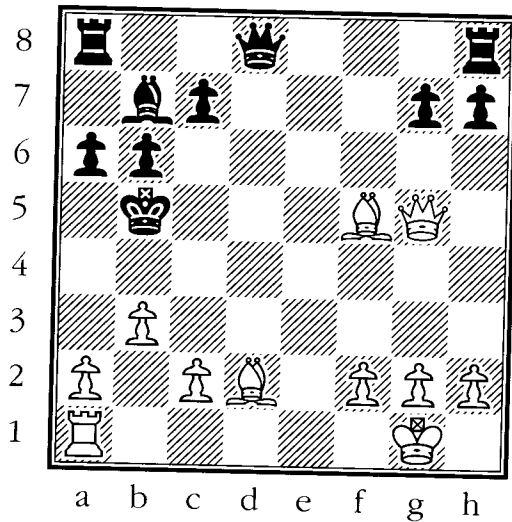
Draw an arrow, or use chess notation, to show how White can checkmate in one move.



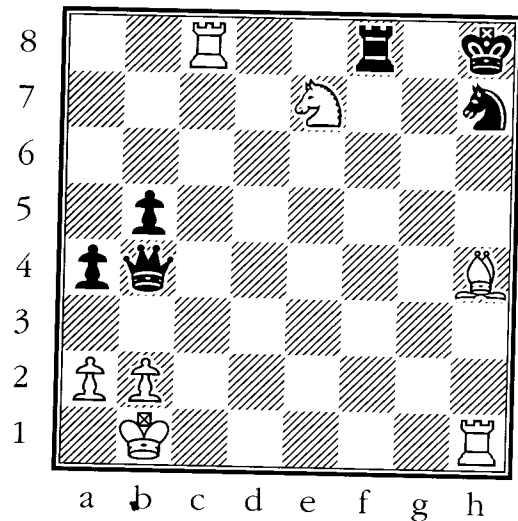
#61



#62



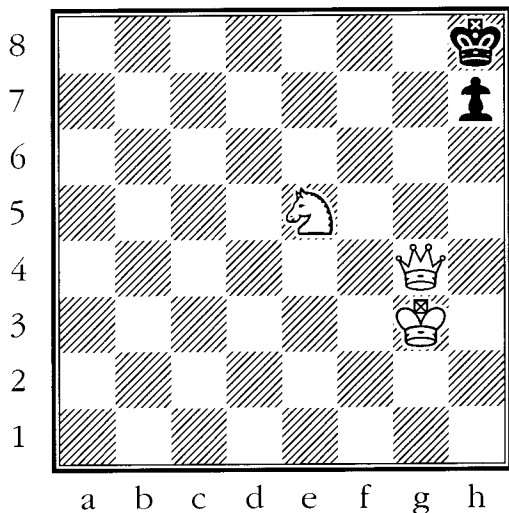
#63



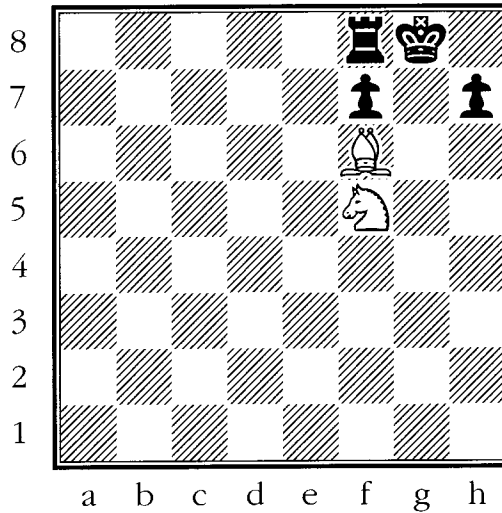
#64

MATE IN ONE PRACTICE—KNIGHTS

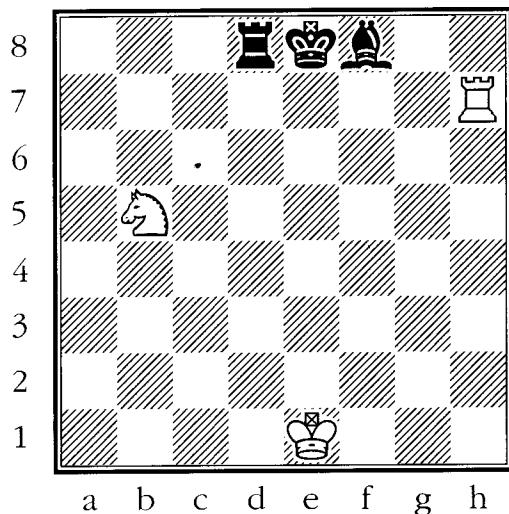
Draw an arrow, or use chess notation, to show how White can checkmate in one move.



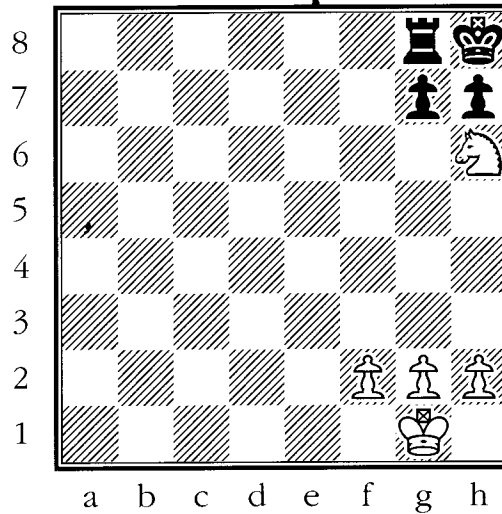
#65



#66



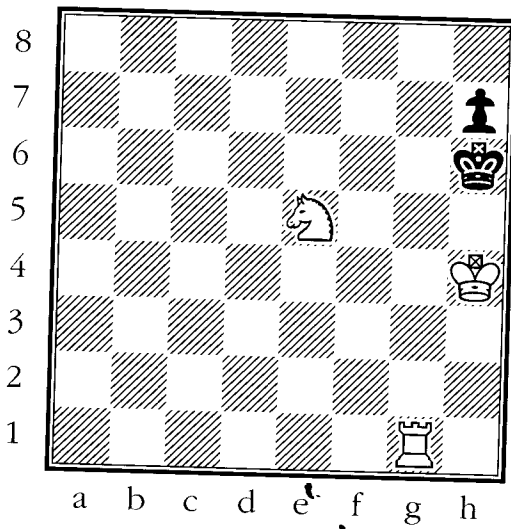
#67



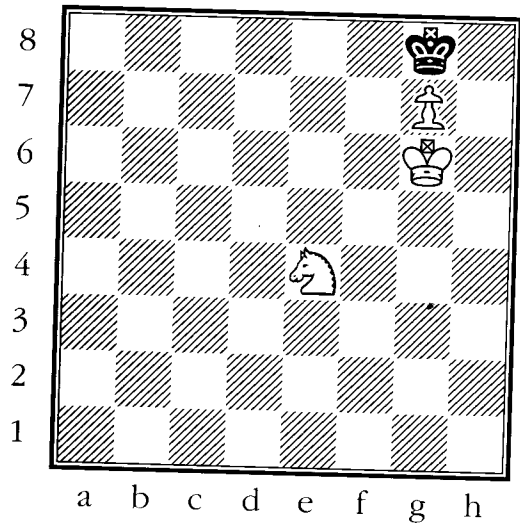
#68

Mate in One Practice—Knights

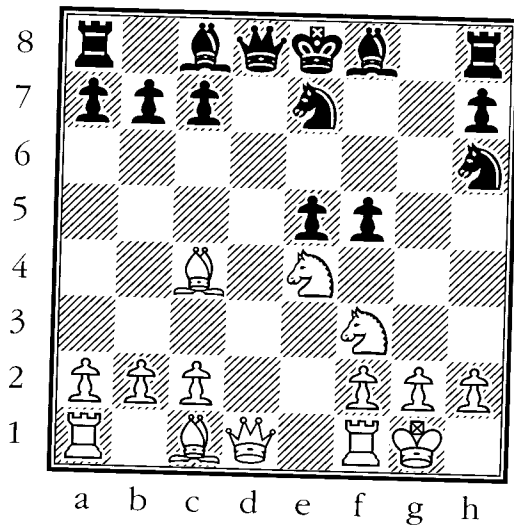
Draw an arrow, or use chess notation, to show how White can checkmate in one move.



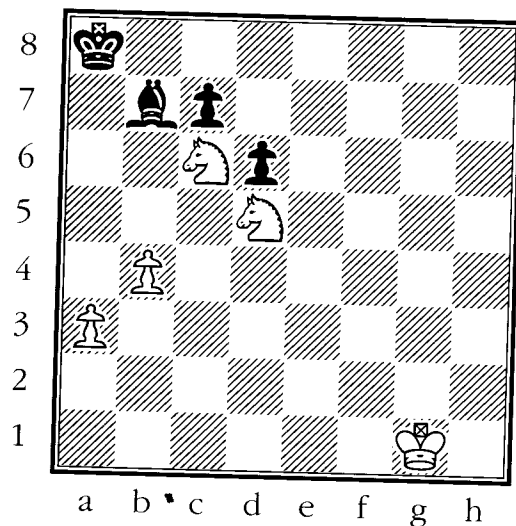
#69



#70



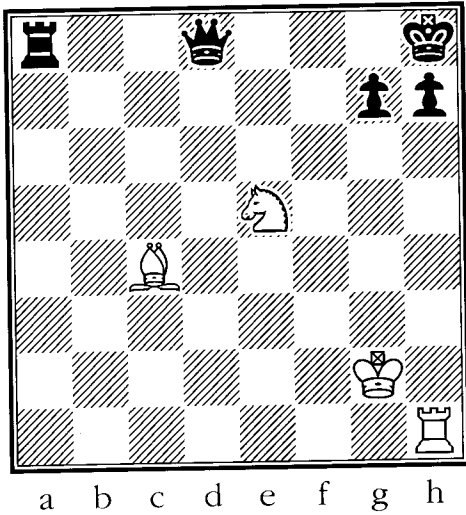
#71



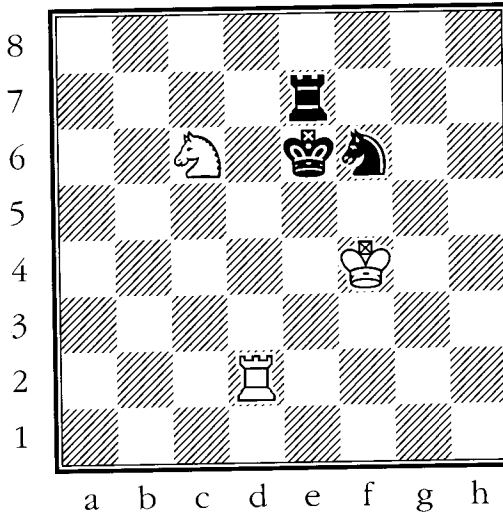
#72

Mate in One Practice—Knights

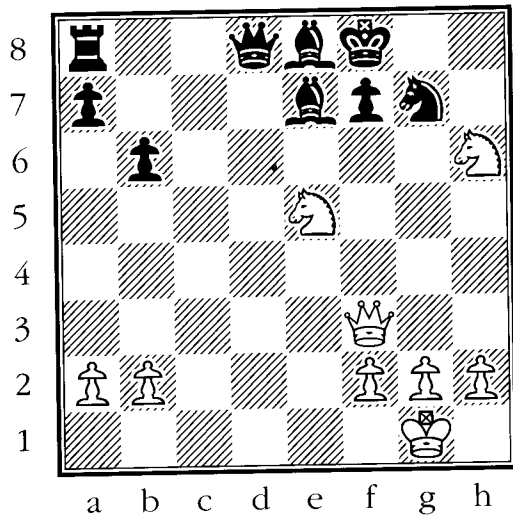
Draw an arrow, or use chess notation, to show how White can checkmate in one move.



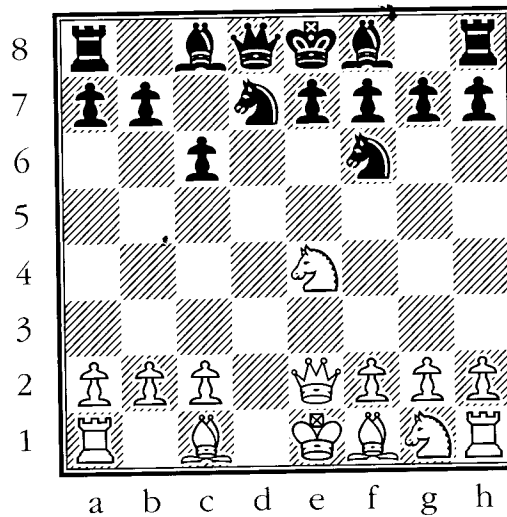
#73



#74



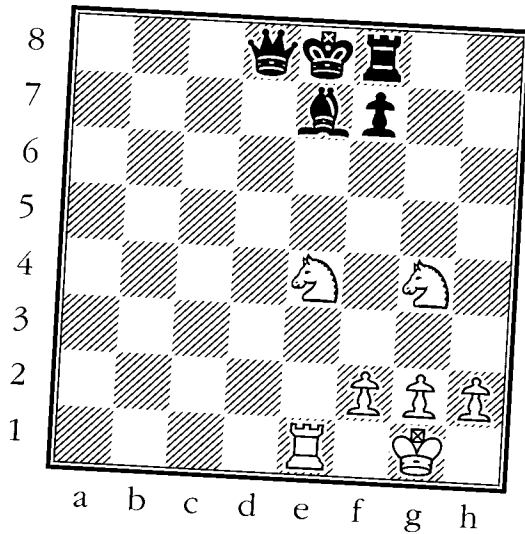
#75



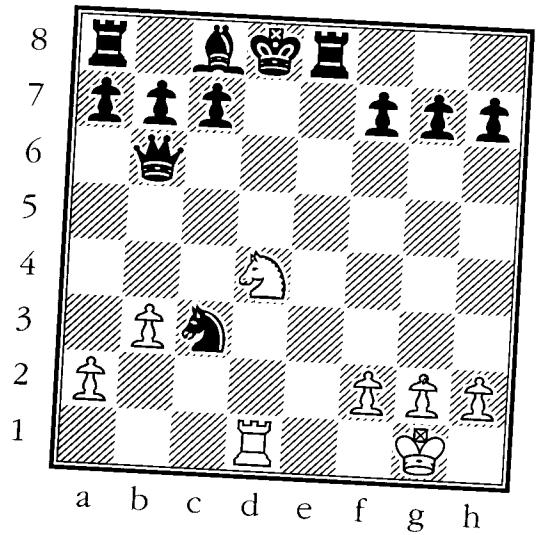
#76

Mate in One Practice—Knights

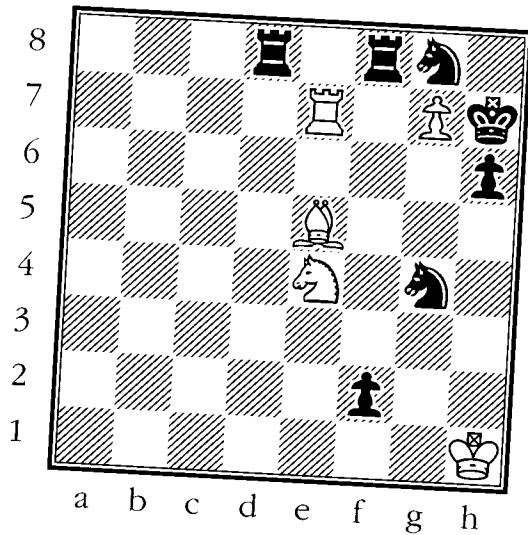
Draw an arrow, or use chess notation, to show how White can checkmate in one move.



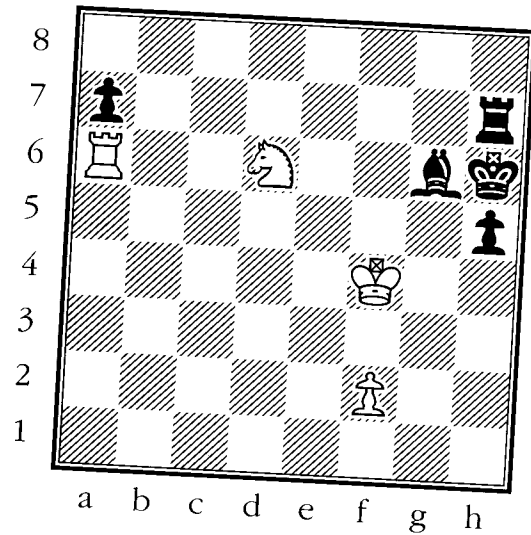
#77



#78



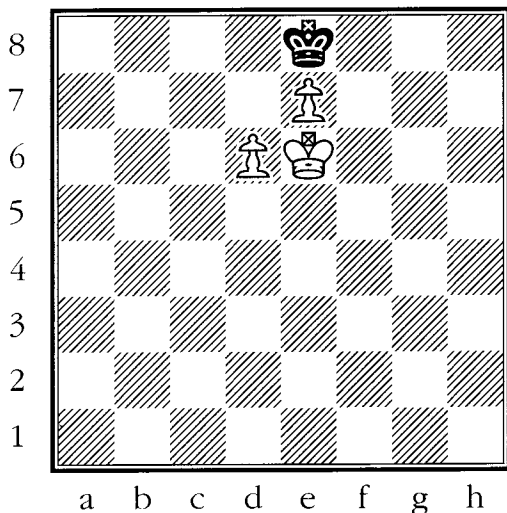
#79



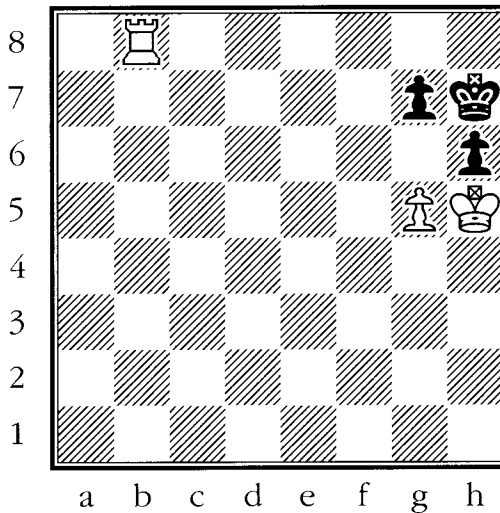
#80

MATE IN ONE PRACTICE—PAWNS

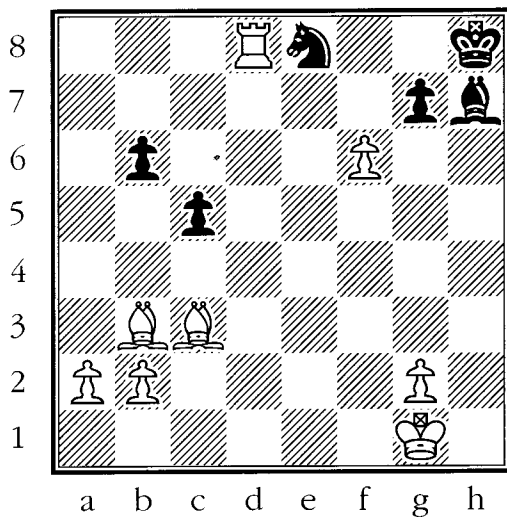
Draw an arrow, or use chess notation, to show how White can checkmate in one move.



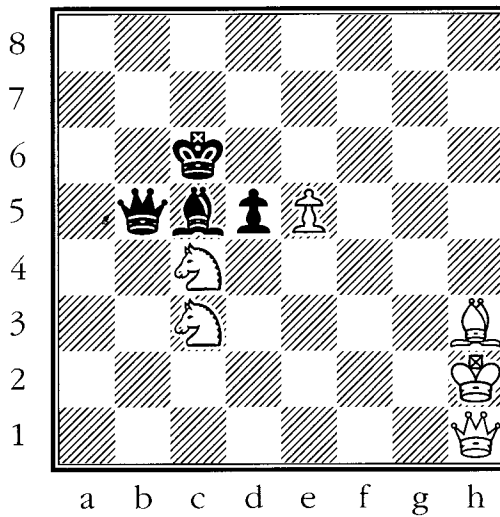
#81



#82



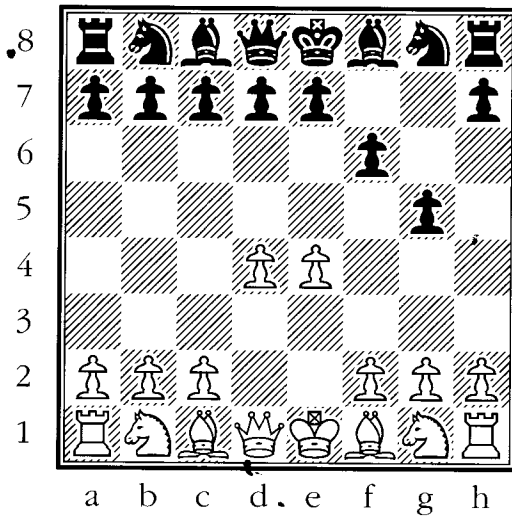
#83



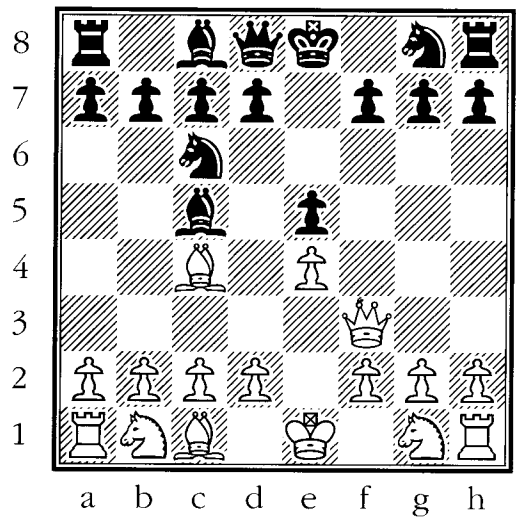
#84

MATE IN ONE PRACTICE

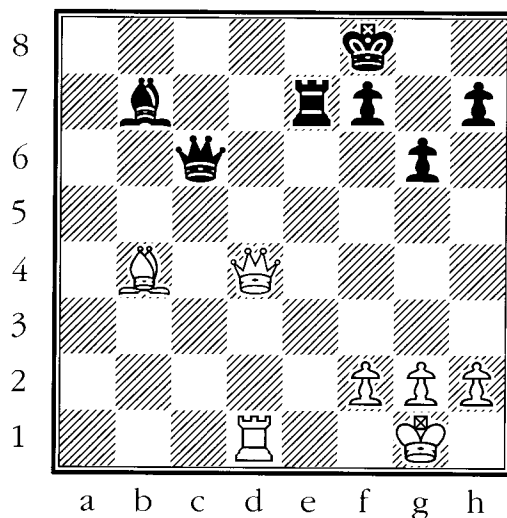
Draw an arrow, or use chess notation, to show how White can checkmate in one move.



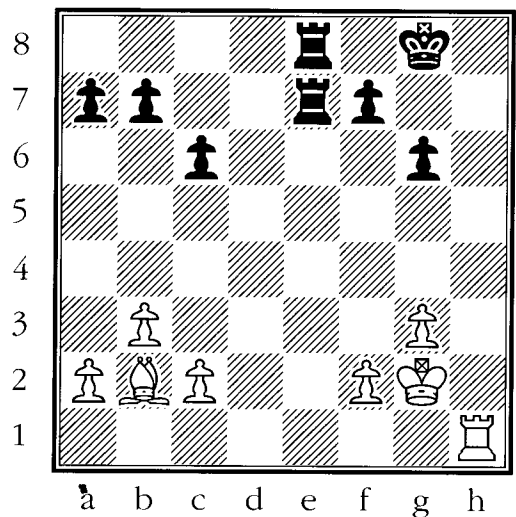
#85



#86



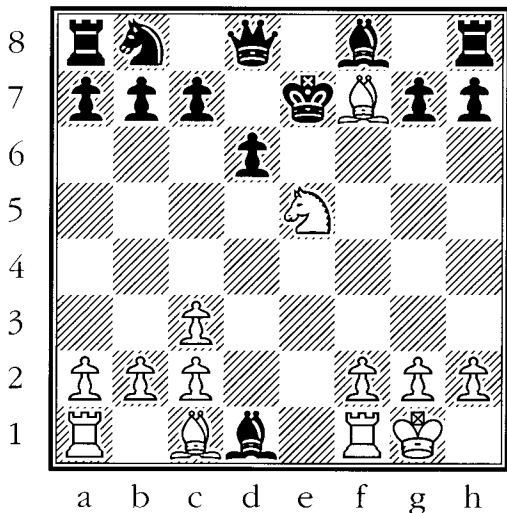
#87



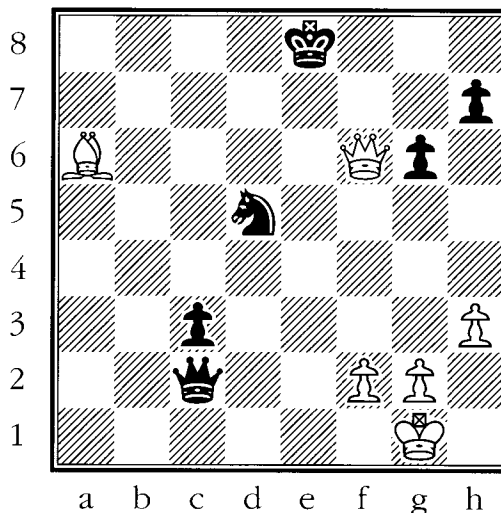
#88

Mate In One Practice

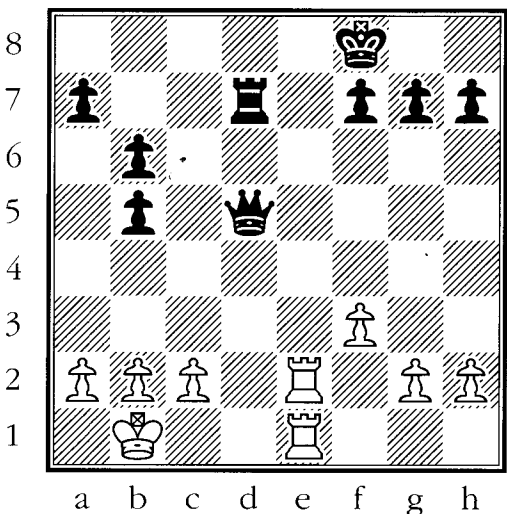
Draw an arrow, or use chess notation, to show how White can checkmate in one move.



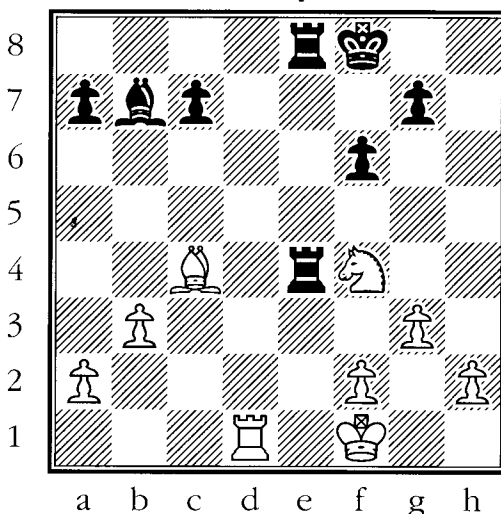
#89



#90



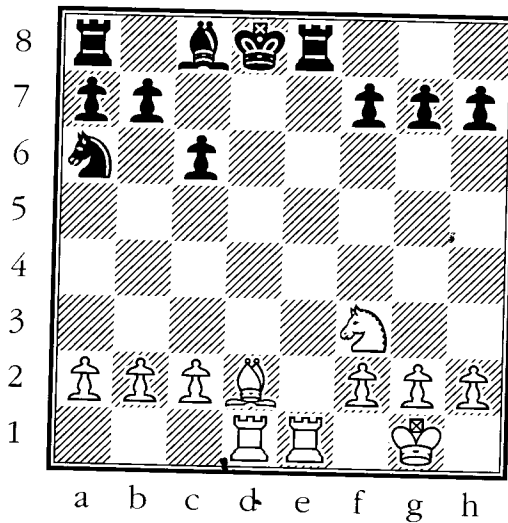
#91



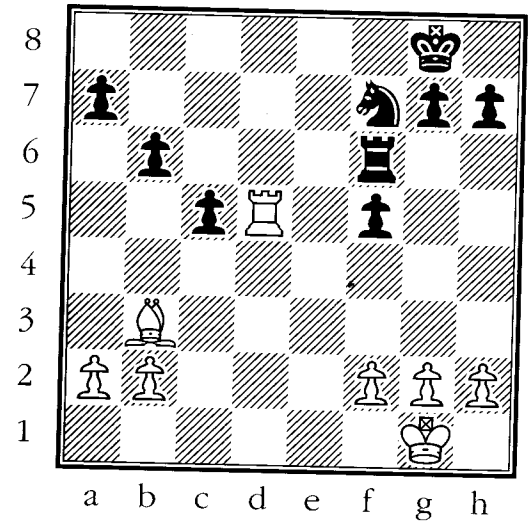
#92

Mate In One Practice

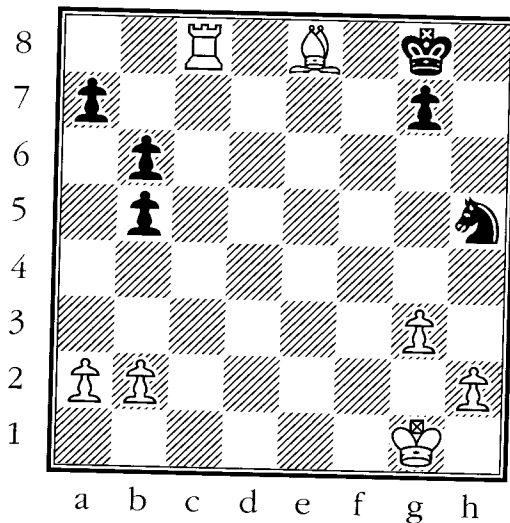
Draw an arrow, or use chess notation, to show how White can checkmate in one move.



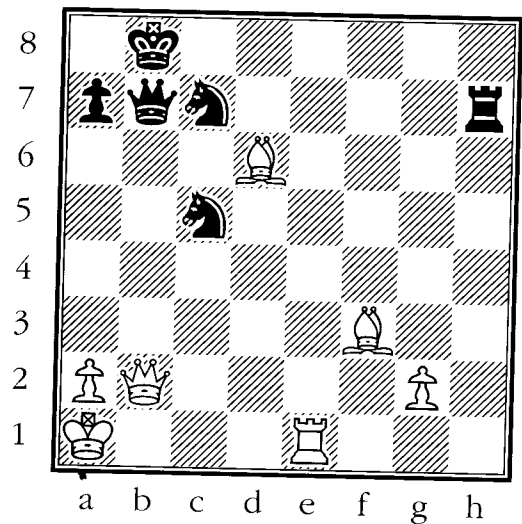
#93



#94



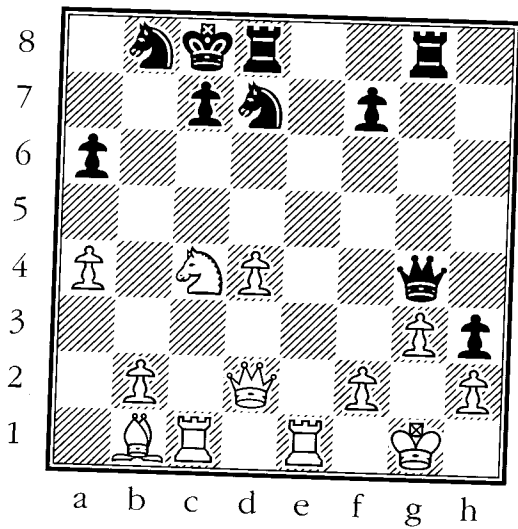
#95



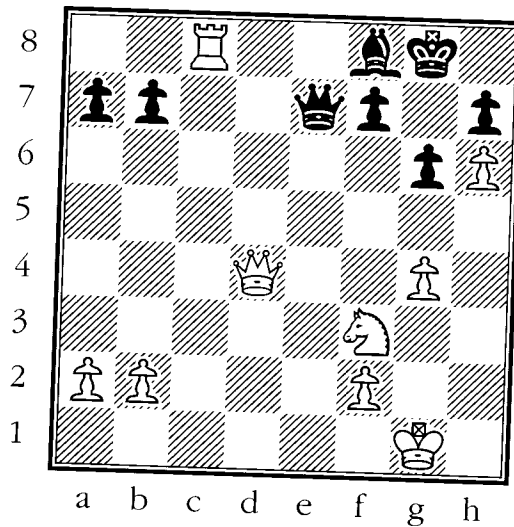
#96

Mate In One Practice

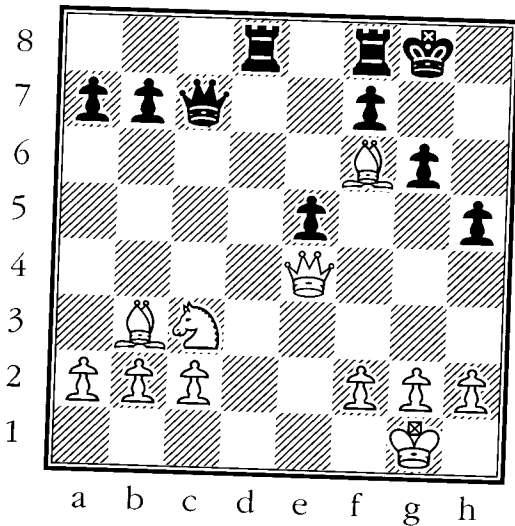
Draw an arrow, or use chess notation, to show how White can checkmate in one move.



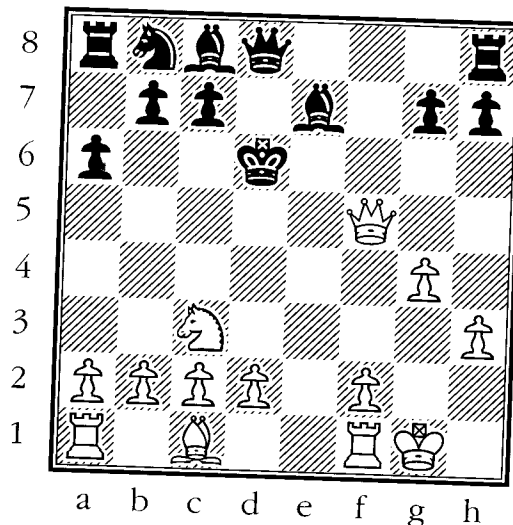
#97



#98



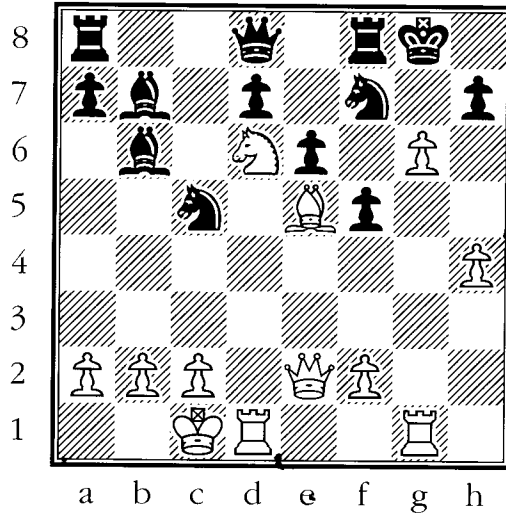
#99



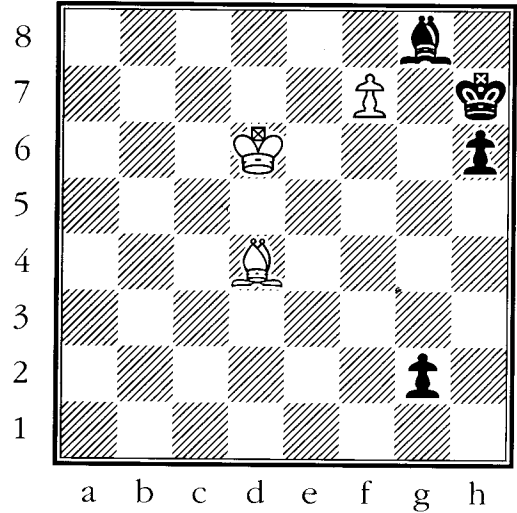
#100

Mate In One Practice

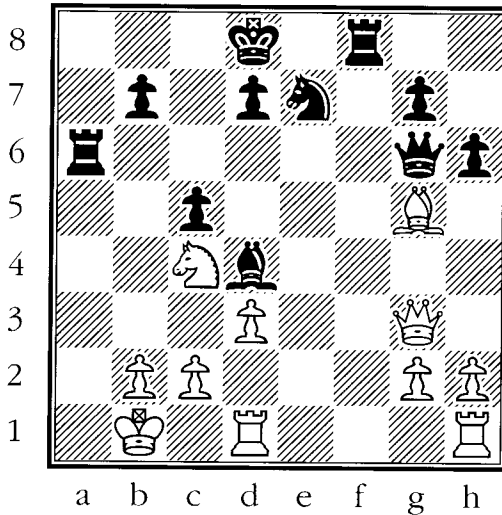
Draw an arrow, or use chess notation, to show how White can checkmate in one move.



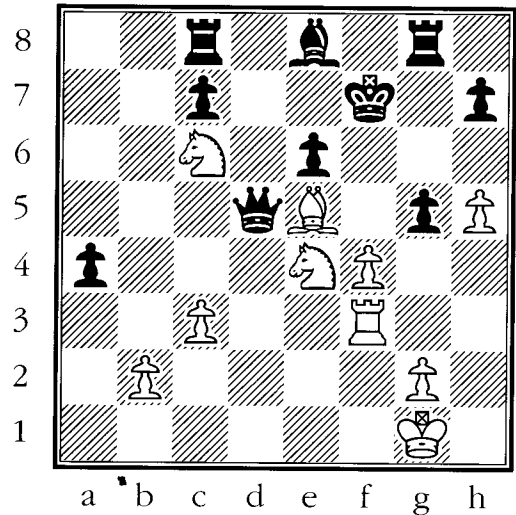
#101



#102



#103



#104

HOW TO READ AND WRITE CHESS

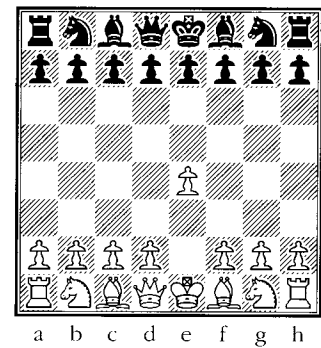
There are many different ways to write chess moves. The most popular method is called algebraic notation. The main idea is that every square on the chessboard has its own name using the letters and numbers on the chessboard. The important part is to know how to identify the pieces you are moving. You just need to use a single capital letter:

K=King Q=Queen R=Rook B=Bishop N=Knight. Note that "P" is not used for Pawn. Chess players have agreed that a move without a capital letter is understood to be a Pawn move.

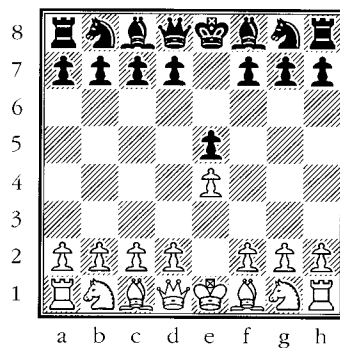
Some special symbols are also used: x means capture or take; 0-0 means Kingside castle; 0-0-0 means Queenside castle; + means check; # means checkmate; = means promotion of a Pawn.

It's a good idea to write down all of your games. This way you can learn from your mistakes and show off your good games too!

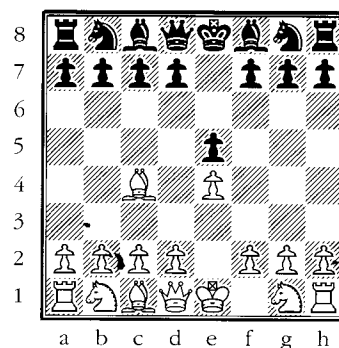
Let's look at how to notate the well-known "Scholar's Mate" and we'll explain each move.



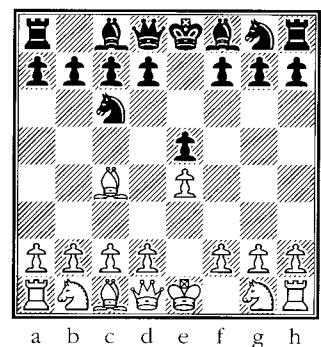
1). e4
(Pawn to e4)



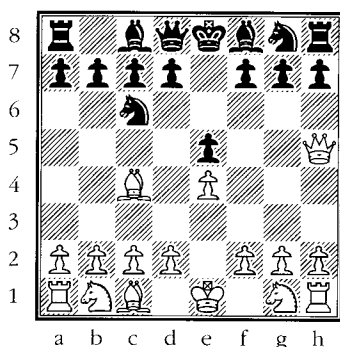
1)... e5
(Pawn to e5)



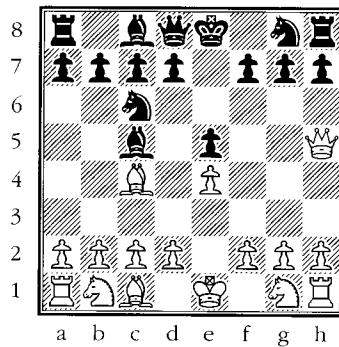
2). Bc4
(Bishop to c4)



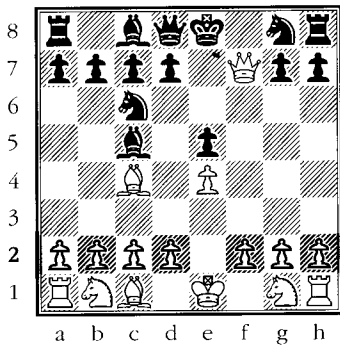
2)... Nc6
(Knight to c6)



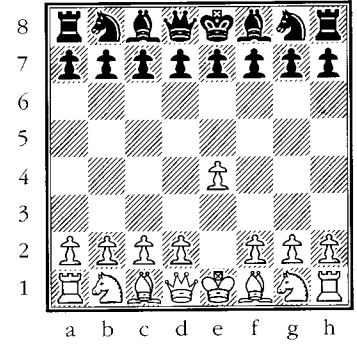
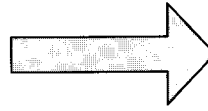
3). Qh5
(Queen to h5)



3)... Bc5??
(Bishop to c5, mistake)

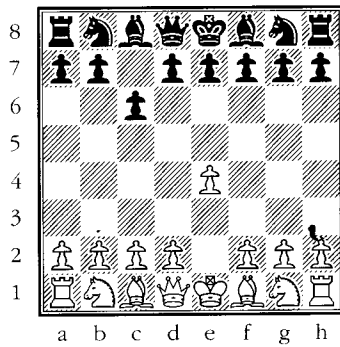


That wasn't so hard.
Now let's practice one
more short game.

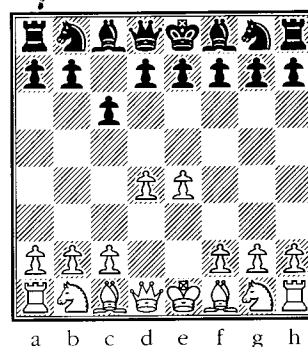


1). e4

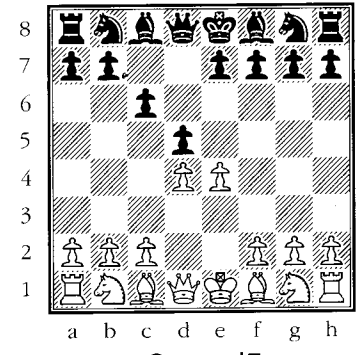
4). Qxf7#
(Queen takes f7,
checkmate)



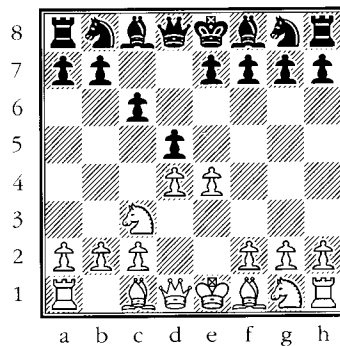
1).... c6



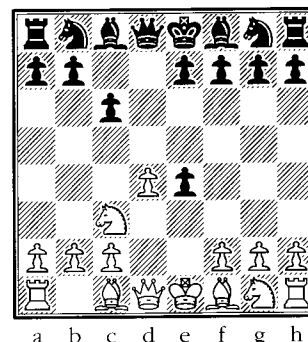
2. d4



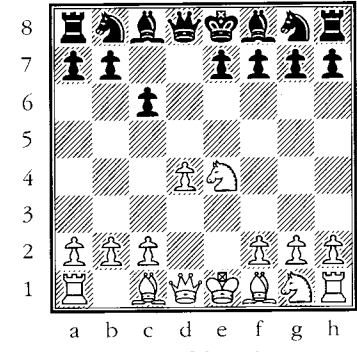
2. d5



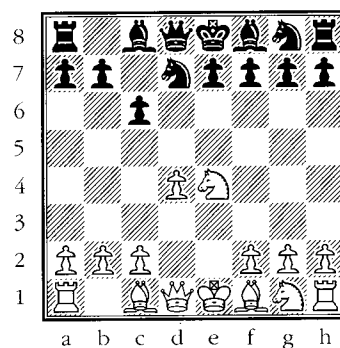
3. Nc3



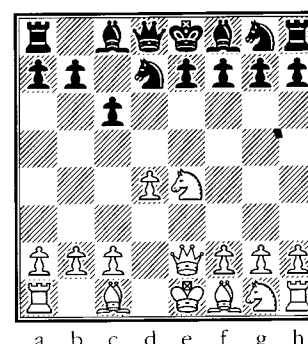
3. dxe4



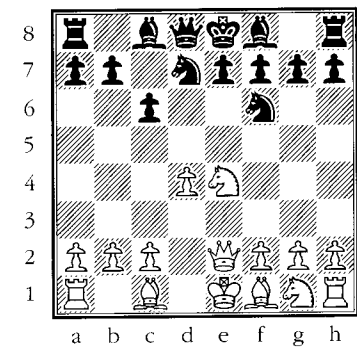
4. Nxe4



4. N(b)d7



5. Qe2



5. N(g)f6??

SOLUTIONS - MATES IN ONE

- | | | |
|------------|-----------------|-----------------|
| 1. Rd8# | 36. Qe8# | 71. Nf6# |
| 2. Rh8# | 37. Qf4# | 72. Nxc7# |
| 3. Rc8# | 38. Qg7# | 73. Ng6# |
| 4. Ra8# | 39. Qh7# | 74. Nd8# |
| 5. R(a)g7# | 40. Qg5# | 75. Ng6# |
| 6. Re8# | 41. Qh3# | 76. Nd6# |
| 7. Rh8# | 42. Qxh5# | 77. N(e)f6# |
| 8. Rxh7# | 43. Qd5# | 78. Nc6# |
| 9. Rh1# | 44. Qxh7# | 79. bxf8=N# |
| 10. Rh8# | 45. e7# | 80. Nf5# |
| 11. Rh7# | 46. Qd5# | 81. d7# |
| 12. Rh1# | 47. c8=Q# | 82. g6# |
| 13. Rh8# | 48. Qxb4# | 83. fxg7# |
| 14. Rf7# | 49. Bf6# | 84. exd (e.p.)# |
| 15. Rd8# | 50. Bd4# | 85. Qh5# |
| 16. Rxc7# | 51. Bg6# | 86. Qxf7# |
| 17. Rh5# | 52. Be4# | 87. Qh8# |
| 18. Rd4# | 53. Bxh7# | 88. Rh8# |
| 19. Rh8# | 54. Bxg6# | 89. Bg5# |
| 20. Ra6# | 55. Bd7# | 90. Bb5# |
| 21. Rxd8# | 56. Bxg5# | 91. Re8# |
| 22. Rd8# | 57. Bg6# | 92. Ng6# |
| 23. Re8# | 58. Be6# | 93. Ba5# |
| 24. 0-0!# | 59. Bd4# | 94. Rd8# |
| 25. Qe7# | 60. Rf8# | 95. Bg6# |
| 26. Qa7# | 61. Ne6# | 96. Re8# |
| 27. Qxg7# | 62. g8=N# | 97. Nd6# |
| 28. Qe7# | 63. Bd7# | 98. Qg7# |
| 29. Qxg7# | 64. Bf6# | 99. Qxg6# |
| 30. Qb7# | 65. Nf7# | 100. Qd5# |
| 31. Qh8# | 66. Ne7 or Nh6# | 101. gxf7 |
| 32. Qf6# | 67. Nc7# | 102. f8=N# |
| 33. Qe6# | 68. Nf7# | 103. Qb8# |
| 34. Qf8# | 69. Nf7# | 104. fxg5# |
| 35. Qa6# | 70. Nf6# | |