

# AlphaNotes Fonts

## 2009 © D. Brian Weese

**This is a freeware font...so please enjoy! Here's the legal stuff:**

1. This font was created by D. Brian Weese (dbweese@gmail.com) and is FREE to use for PERSONAL USE ONLY. It may NOT be used for commercial purposes or sold in any way.
2. This font MAY NOT be placed on any website without my express permission first. However, You may email these fonts to friends for their personal use as long as you send them in the original format with the README file.
3. I am not and can not be held responsible for any damages incurred to any computer after installing and/or using this font.

**How the font works:**

1. There is a separate font for each note duration (AlphaNotes Quarter for quarter notes, AlphaNotes Halves for half notes, etc each respectively named). Each must be installed to get all the different note durations. (It is possible to just install the AlphaNotes Quarters font if all you want access to are quarter notes.)
2. Every font has the same exact set of non-pitched music characters (treble clef, rests, time and key signatures, etc). The only thing different is the pitched notes. See pages following for keystrokes to produce the various characters with this font. Once you use it a few times you'll understand what to do to get what you want. The most complicated thing is that you have to change the font each time you want a different note duration, but it will do the job.
3. Beamed notes are possible, but there is a limitation – you can only beam notes of the same pitch. (Creating all the possible beam direction possibilities would create a very complex font.) The last page is a sample of some different songs I notated using this font.

**If this font will benefit you, great! If it's too complicated I will be happy to answer questions or even help you get the end result you want. My intended use for this font is for my own worksheets, tests, and powerpoints so I don't have to create JPEGs from a music notation program (which I do have) and cut-and-paste them into my documents.**

**If you use this font, send me a link to your final product; I would love to see what you did with it. If you like this font or have an idea for a font, let me know! Send an email to me at dbweese@gmail.com.**

Thanks,  
D. Brian Weese

---

To install a font:

1. Click **START**, then **CONTROL PANEL**.
2. Double click **FONTS** folder.
3. Click **FILE** menu, then **INSTALL NEW FONT**.
4. Locate the desired font using the **FOLDERS** and **DRIVES** drop down menu.
5. After the fonts are retrieved from the selected folder, select the font(s) you want to install (you can Control-Click to install multiple fonts) then click **OK**.

To remove a font:

1. Find and open the **FONTS** folder (Click **START**, then **CONTROL PANEL**).
2. Select the font(s) you want to delete.
3. Click **FILE** menu, then **DELETE**.

# AlphaNotes Quarters Font

## 2009 © D. Brian Weese

### Pitches:

% \* c d e f g a b @ C D E F G A B ~

### Rests:

% r t y u


### Other Staff Objects:

% & \$ ?  $\frac{2}{2}$   $\frac{2}{4}$   $\frac{3}{4}$   $\frac{4}{4}$   $\frac{5}{4}$   $\frac{6}{8}$   $\text{¢}$   $\text{€}$   
1 2 3 4 5 6 7 8

[ ] = - ( ) i o p j k l I n m


Note: When I use this font, I put an empty staff character (=) to separate notes. If not, ledger lines in consecutive notes blend together too much.

## AlphaNotes Eighths



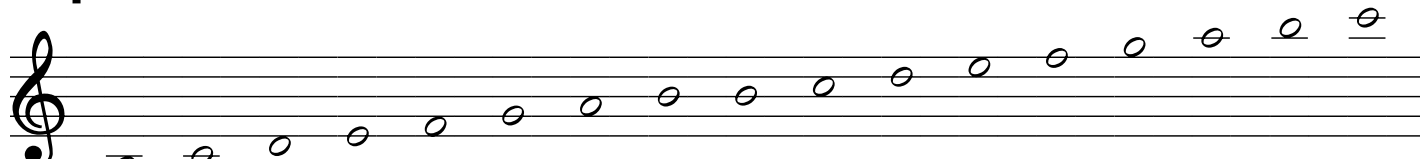
% \* c d e f g a b @ C D E F G A B ~

## AlphaNotes Halves




% \* c d e f g a b @ C D E F G A B ~

## AlphaNotes Wholes




% \* c d e f g a b @ C D E F G A B ~

## AlphaNotes Beamed Eighths



% \* c d e f g a b @ C D E F G A B ~

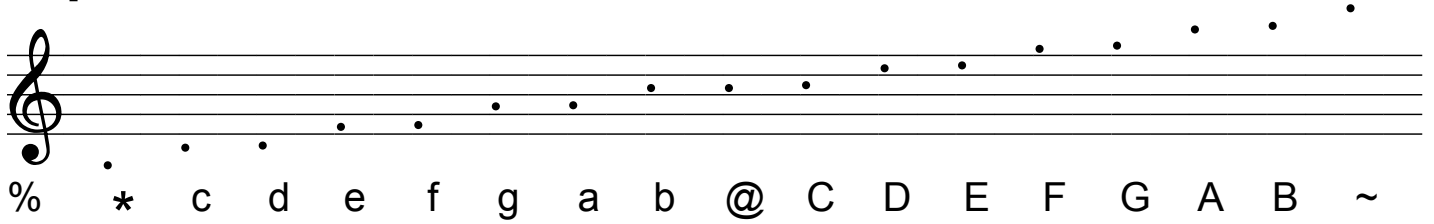
## AlphaNotes Beamed Sixteenths



% \* c d e f g a b @ C D E F G A B ~

(Obviously, the 2 beamed fonts above will only work for sets of beamed notes on the same line or space, sorry!)

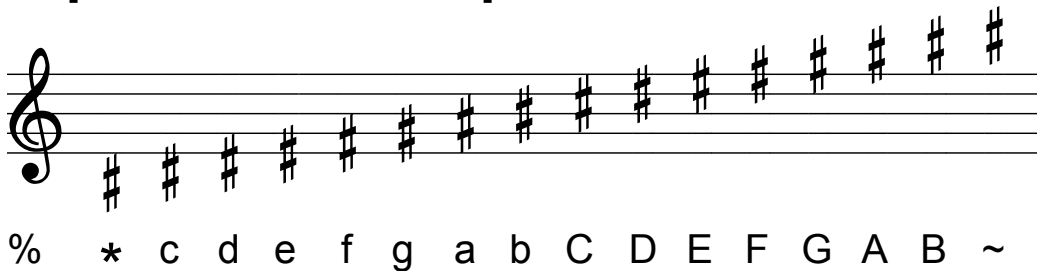
## AlphaNotes Dots



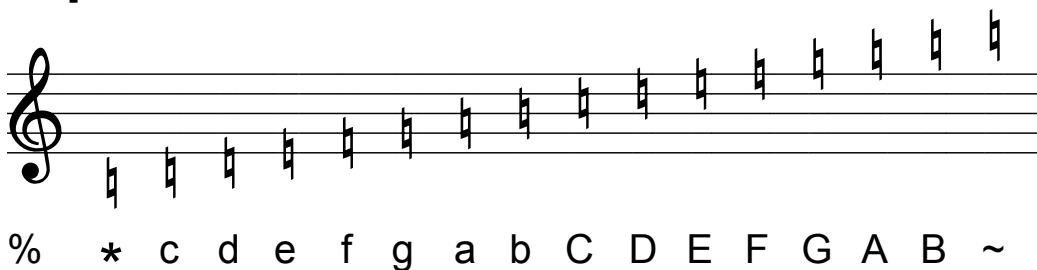
## AlphaNotes Flats



## AlphaNotes Sharps



## AlphaNotes Naturals



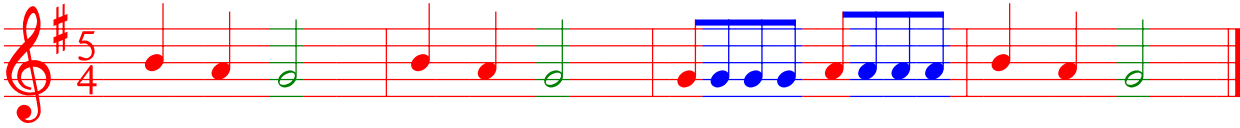
(The Flats, Sharps and Naturals fonts can be used for accidentals and other key signatures not found in the basic set)

### Note:

The font sets on the last 2 pages are exactly the same as the AlphaNote Quarters Font, except that respective pitched note values are produced for pitched characters instead of Quarter Notes. The rest and other staff object characters are the same as the AlphaNote Quarters Font version.

# AlphaNotes Font Examples

## Hot Cross Buns



Here's the keystrokes and fonts I used to notate this song... (I added spaces below to make things clearer, but don't use spaces.)

% i 5 = b = a = g = = ( b = a = g = = ( g g g g - a a a ( b = a = g = = )

AlphaNotes Quarters

AlphaNotes Halves

AlphaNotes Beamed Eighths

## Ode to Joy

In order to use the Bass Clef, you have to think of the notes (and accidentals/key signature) in the Treble Clef. It would take another whole set of fonts to create a "real" Bass Clef font version! Yikes!



AlphaNotes Flats

AlphaNotes Dots

AlphaNotes Eighths

## If You're Happy



## Tonguing Exercise



AlphaNotes Quarters

AlphaNotes Beamed Sixteenths

AlphaNotes Beamed Eighths

## Accidental Use

All of these accidentals are in the AlphaNotes Quarters set, though I could have used the AlphaNotes Flats, Sharps and Naturals sets instead.

