

SCHOLAR'S MATE

WHITE	BLACK
<i>Rocky</i>	<i>Kiril</i>
1. e4	e5

The move written on the left is white's and the one at the right is black's.

2. Qh5

Rocky plays for the quick checkmate. The number 2 shows that this is the second turn of the game.

2. . . . Nc6

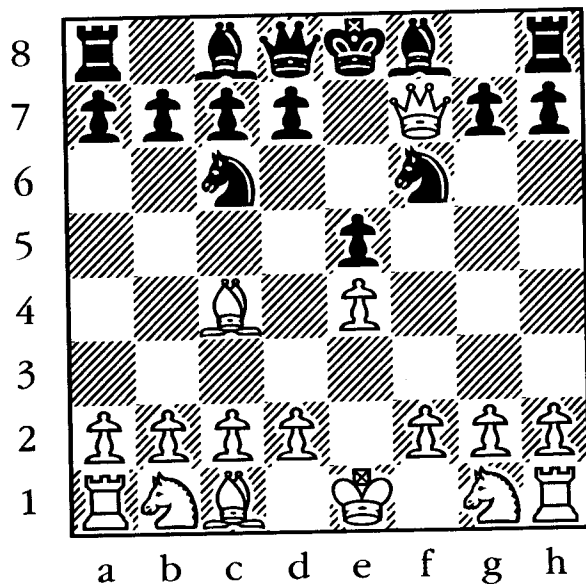
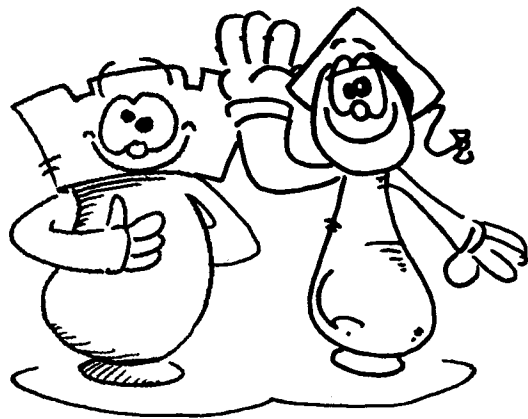
When a move by black is given alone, there are three dots before it.

3. Bc4 Nf6 ?

Oops. This is a big mistake. A better defence is 3...g6! 4.Qf3 Nf6.

4. Qxf7#

Oh, no! Kiril got mated in just four moves. That was no fun at all.



STOP!

**IF YOU DON'T KNOW
HOW TO PLAY CHESS**

All of the rules are given at the **back** of the book, beginning on **page 207**. Please review them before **applying** for your chess licence. **Thank you.**

DO NOT PASS GO. DO NOT COLLECT \$200.