



**MUSIC  
PUZZLES**

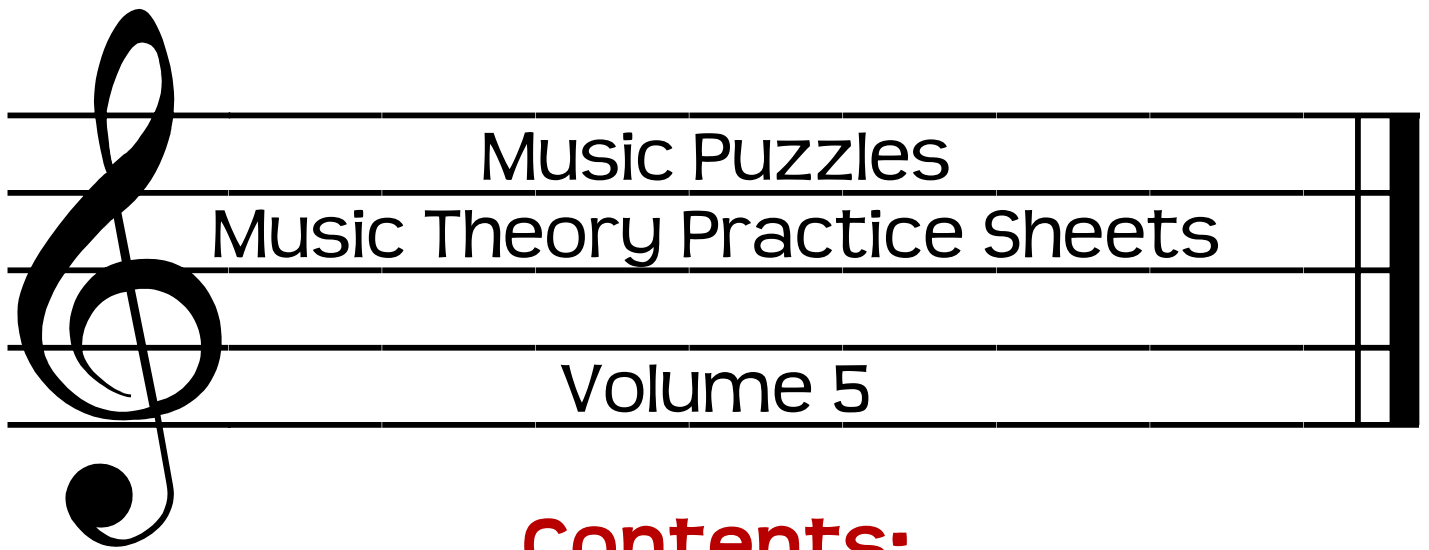


**Music Theory Practice Sheets**

**Volume 5**

**(5 Music Puzzles and Answer Keys)**

**by D. Brian Weese**



## Contents:

Color by Rhythm #3 (Sailboat)  
Going Up! Going Down! #1 (Intervals)  
Key Signatures #2  
Note Name Crossword #4  
Rhythm Math #2

## Additional Notes:

### Directions for the Teacher:

These practice sheets are designed for use in the classroom, whether you are teaching in various public school classroom situations, homeschooling or teaching graded church choirs. You will find many different concepts within these worksheets. It is up to you as the instructor to teach the desired content and then decide how you want to use these worksheets, such as for review practice or take home assignments following the teaching of a new concept.

### Copyright Permissions:

You have permission to photocopy these puzzles as needed for your classroom/choir situation. You do not have permission to modify and/or resell these worksheets.

### Further Contact:

If you have questions, comments or suggestions you can best contact me by sending an email to [briansonya@sbcglobal.net](mailto:briansonya@sbcglobal.net).



# Color By Rhythm #3

Directions: Color each rhythm pattern in the picture below with the following colors:

♪♪ = Yellow

♪♪ = Dark Blue

♪ = Green

♪♪ = Purple

γ = Gray

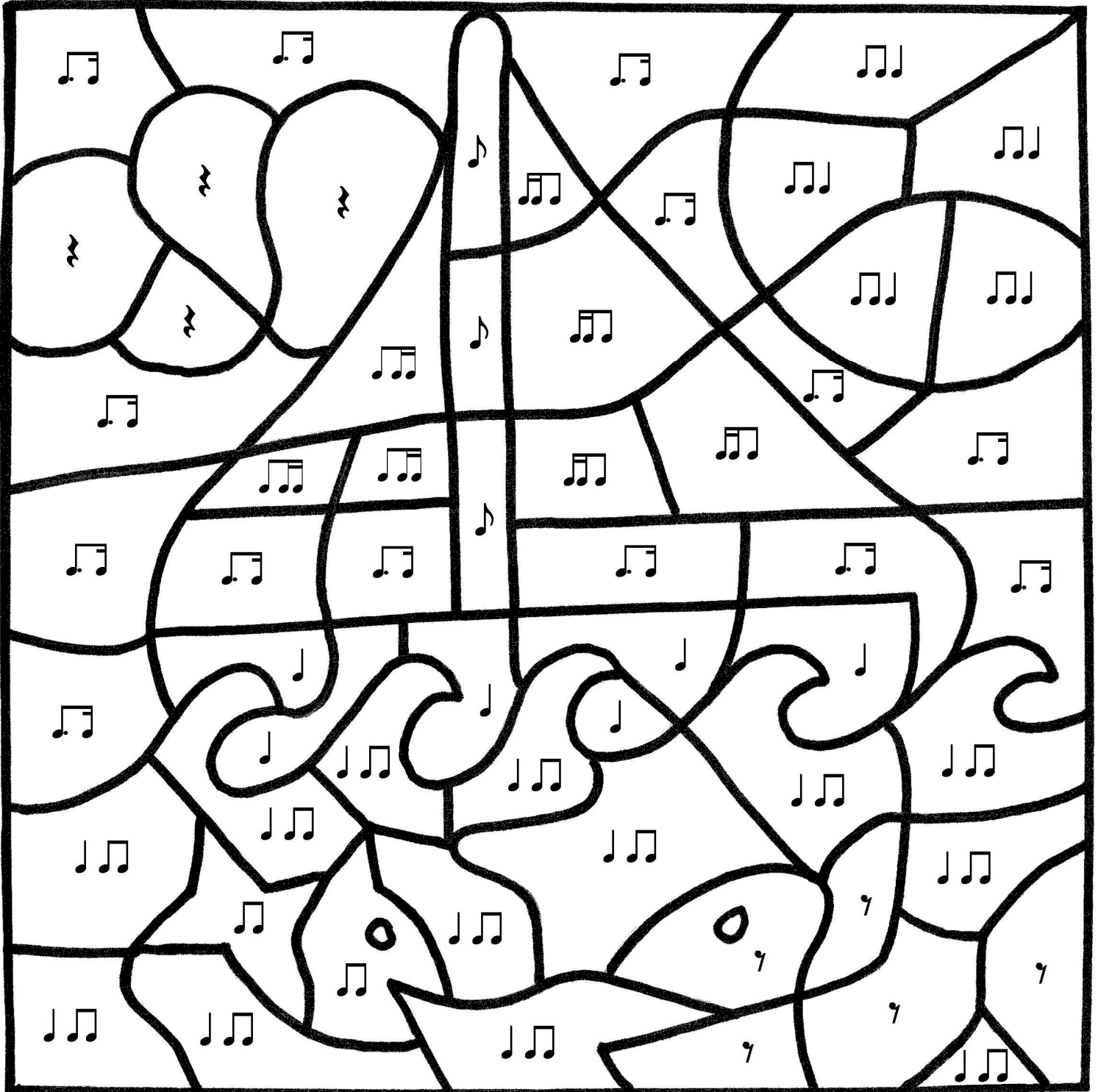
♪ = Orange

♪♪ = Light Blue

♪ = Brown

♪♪ = Red

ξ = White



# Color By Rhythm #3

Directions: Color each rhythm pattern in the picture below with the following colors:

♪♪ = Yellow

♪♪ = Dark Blue

♪ = Green

♪♪ = Purple

γ = Gray

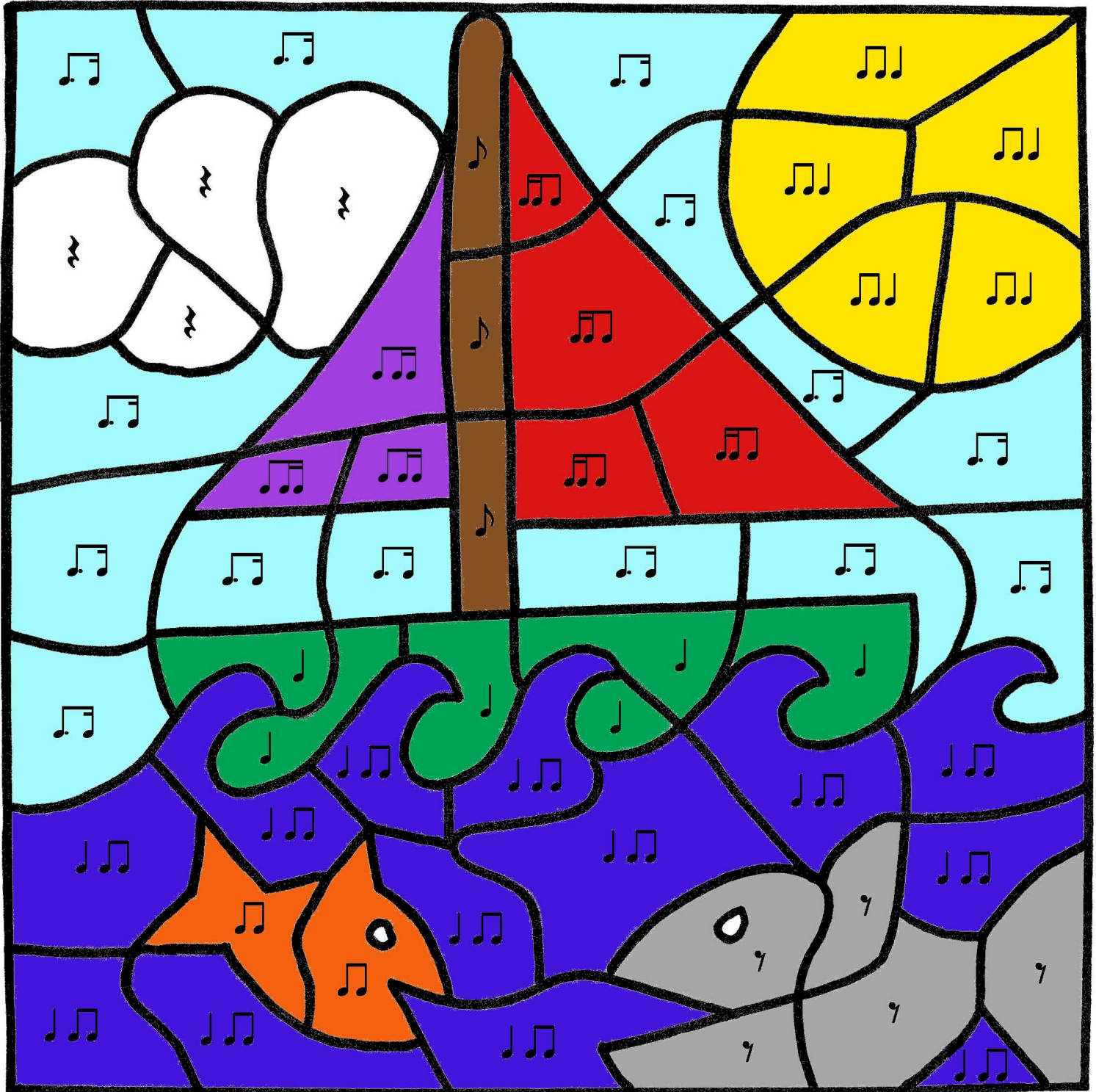
♪ = Orange

♪♪ = Light Blue

♪ = Brown

♪♪ = Red

ξ = White



# GOING UP! GOING DOWN! #2

Directions: The “vertical distance” between two notes going up or down is called an interval. We use numbers to measure the distance – the bigger the number the bigger the musical leap. To find the interval count the number of lines and spaces between the notes, *including* the line or space of the two notes in the interval. Determine the interval between each set of notes. Write the direction (↑ or ↓) and number of the interval on the top blank and the associated letter on the bottom blank. Each set of intervals should spell out common, everyday words. The first interval has been done for you.



Intervals Going Up								Intervals Going Down							
1	↑2	↑3	↑4	↑5	↑6	↑7	↑8	(1)	↓2	↓3	↓4	↓5	↓6	↓7	↓8
Unison							Octave	(unison)							Octave
<b>A</b>	<b>B</b>	<b>E</b>	<b>G</b>	<b>H</b>	<b>I</b>	<b>L</b>	<b>M</b>	<b>(A)</b>	<b>N</b>	<b>O</b>	<b>P</b>	<b>R</b>	<b>S</b>	<b>T</b>	<b>U</b>

**1**

↑2  
**B**    \_\_\_  
          \_\_\_

**5**

\_\_\_  
\_\_\_

**2**

\_\_\_  
\_\_\_

**6**

\_\_\_  
\_\_\_

**3**

\_\_\_  
\_\_\_

**7**

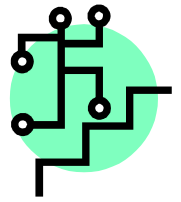
\_\_\_  
\_\_\_

**4**

\_\_\_  
\_\_\_

**8**

\_\_\_  
\_\_\_



# GOING UP! GOING DOWN! #2

Directions: The “vertical distance” between two notes going up or down is called an interval. We use numbers to measure the distance – the bigger the number the bigger the musical leap. To find the interval count the number of lines and spaces between the notes, *including* the line or space of the two notes in the interval. Determine the interval between each set of notes. Write the direction (↑ or ↓) and number of the interval on the top blank and the associated letter on the bottom blank. Each set of intervals should spell out common, everyday words. The first interval has been done for you.



Intervals Going Up								Intervals Going Down							
1	↑2	↑3	↑4	↑5	↑6	↑7	↑8	(1)	↓2	↓3	↓4	↓5	↓6	↓7	↓8
Unison							Octave	(unison)							Octave
<b>A</b>	<b>B</b>	<b>E</b>	<b>G</b>	<b>H</b>	<b>I</b>	<b>L</b>	<b>M</b>	<b>(A)</b>	<b>N</b>	<b>O</b>	<b>P</b>	<b>R</b>	<b>S</b>	<b>T</b>	<b>U</b>

**1**

↑2    1    ↓7

**B**    **A**    **T**

**5**

↓6    ↓7    ↓3    ↓5    ↑3

**S**    **T**    **O**    **R**    **E**

**2**

↑7    ↑6    ↑8    ↑3

**L**    **I**    **M**    **E**

**6**

↓2    1    ↑8    ↑3    ↓6

**N**    **A**    **M**    **E**    **S**

**3**

↓4    1    ↓6    ↓7

**P**    **A**    **S**    **T**

**7**

↓6    ↑6    ↓2    ↑4    ↑3    ↓5

**S**    **I**    **N**    **G**    **E**    **R**

**4**

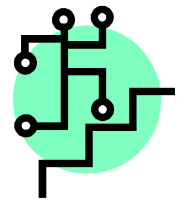
↑8    1    ↓7    ↑5

**M**    **A**    **T**    **H**

**8**

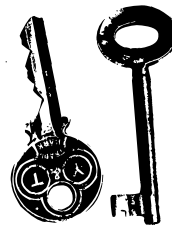
↑2    ↓8    ↑4    ↑7    ↑3    ↓6

**B**    **U**    **G**    **L**    **E**    **S**

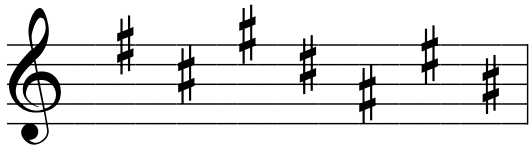




# Key Signatures #2



**Directions:** Look at each key signature closely and find out which sharp or flat is missing, based on the intended key above the key signature. Draw in the missing sharp or flat and write its letter name in the blank below. The blanks will spell everyday words if you have done the work correctly. The order of sharps and flats is listed below. Notice the order of sharps and flats are opposite.



Sharps: F - C - G - D - E - A - B



Flats: B - E - A - D - G - C - F

1. E Major



\_\_\_\_\_

2. F# Major



\_\_\_\_\_

3. B Major



\_\_\_\_\_

4. C# Major



\_\_\_\_\_

5. E<sup>b</sup> major



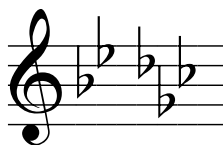
\_\_\_\_\_

6. D<sup>b</sup> Major



\_\_\_\_\_

7. G<sup>b</sup> Major



\_\_\_\_\_

8. C<sup>b</sup> Major



\_\_\_\_\_

9. A<sup>b</sup> major



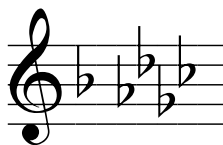
\_\_\_\_\_

10. E Major



\_\_\_\_\_

11. G<sup>b</sup> Major



\_\_\_\_\_

12. B Major



\_\_\_\_\_

13. E<sup>b</sup> major



\_\_\_\_\_

14. A<sup>b</sup> Major



\_\_\_\_\_

15. A Major



\_\_\_\_\_

16. C<sup>b</sup> Major



\_\_\_\_\_



# Key Signatures #2



**Directions:** Look at each key signature closely and find out which sharp or flat is missing, based on the intended key above the key signature. Draw in the missing sharp or flat and write its letter name in the blank below. The blanks will spell everyday words if you have done the work correctly. The order of sharps and flats is listed below. Notice the order of sharps and flats are opposite.



Sharps: F - C - G - D - E - A - B



Flats: B - E - A - D - G - C - F

1. E Major



F

2. F# Major



A

3. B Major



D

4. C# Major



E

5. E<sup>b</sup> major



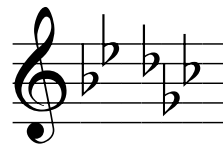
D

6. D<sup>b</sup> Major



E

7. G<sup>b</sup> Major



A

8. C<sup>b</sup> Major



F

9. A<sup>b</sup> major



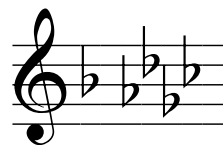
A

10. E Major



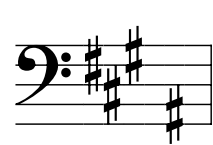
C

11. G<sup>b</sup> Major



E

12. B Major



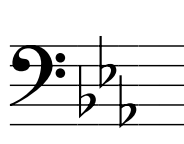
D

13. E<sup>b</sup> major



E

14. A<sup>b</sup> Major



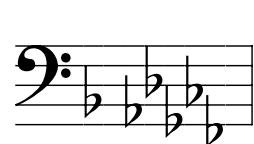
D

15. A Major



G

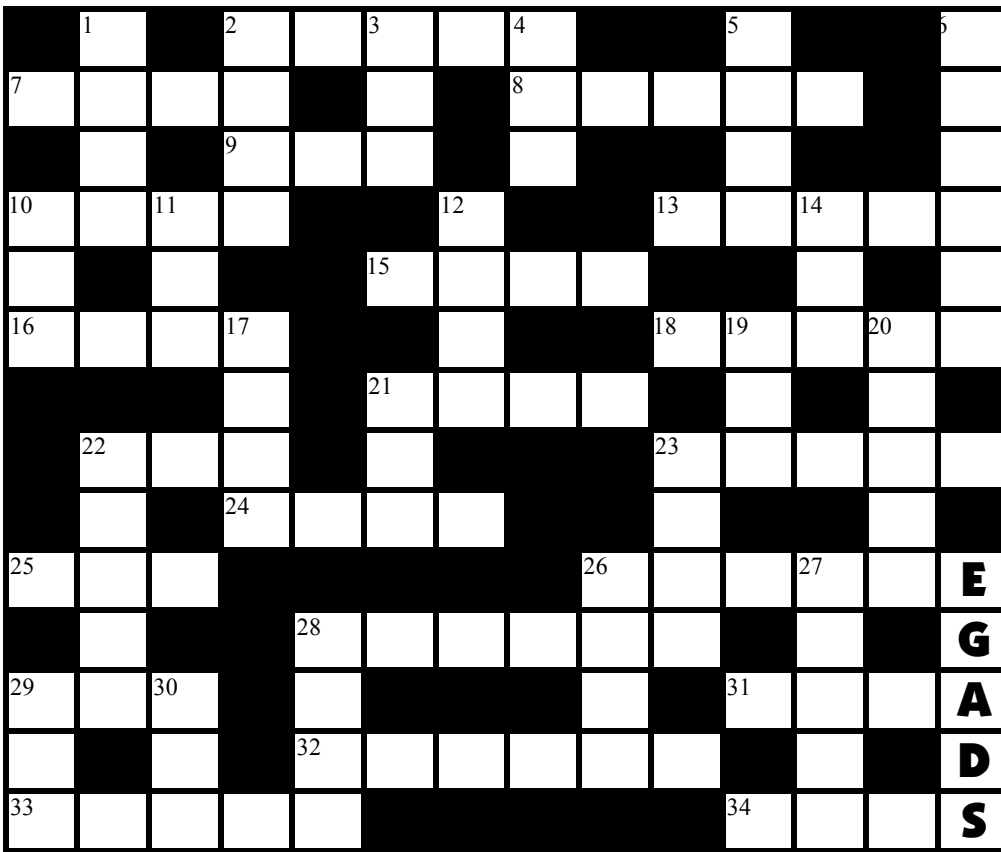
16. C<sup>b</sup> Major



E



# NOTE NAME CROSSWORD PUZZLE #4



**Directions:** Read the note names for each problem; some include ledger line notes and some have non-musical letters. Each problem spells a real word, names or common abbreviation. Some words may have been used more than once. One has been done for you. Use the key below to figure out the rest of the words.



**D F A C E G B**



**C E G B D F A**

## ACROSS:

<b>2</b>	<b>22</b>
<b>7</b>	<b>23</b>
<b>8</b>	<b>24</b>
<b>9</b>	<b>25</b>
<b>10</b>	<b>26</b>
<b>13</b>	<b>28</b>
<b>15</b>	<b>29</b>
<b>16</b>	<b>31</b>
<b>18</b>	<b>32</b>
<b>21</b>	<b>33</b>
	<b>34</b>

## DOWN:

<b>1</b>	<b>17</b>
<b>2</b>	<b>19</b>
<b>3</b>	<b>20</b>
<b>4</b>	<b>21</b>
<b>5</b>	<b>22</b>
<b>6</b>	<b>23</b>
<b>10</b>	<b>26</b>
<b>11</b>	<b>27</b>
<b>12</b>	<b>28</b>
<b>14</b>	<b>29</b>
	<b>30</b>

# NOTE NAME CROSSWORD PUZZLE #4

1	F		2	B	U	3	D	G	4	E		5	C		6	D		
7	F	A	T	E			A		8	G	L	E	A	N		E		
	C		9	A	D	D			G			G			C			
10	S	E	11	E	R			12	D			13	D	E	F	E	R	
	A		R				15	G	E	A	R			A			E	
16	G	L	A	17	D				A			18	B	A	D	20	G	E
			R				21	C	R	A	B			C			R	
		22	B	A	A			A				23	C	E	D	A	R	
		R		24	G	A	B	E				L					C	
25	F	A	R							26	C	O	F	27	F	E	E	
	C				28	B	A	G	D	A	D			U			G	
29	B	E	30	D			A				R			31	E	D	N	A
	E		I			32	D	E	C	A	D	E			G			D
33	E	A	G	L	E									34	B	E	E	S

**Directions:** Read the note names for each problem; some include ledger line notes and some have non-musical letters. Each problem spells a real word, names or common abbreviation. Some words may have been used more than once. One has been done for you. Use the key below to figure out the rest of the words.



**D F A C E G B**



**C E G B D F A**

ACROSS:		DOWN:	
22	23	17	19
2	24	19	20
7	25	20	21
8	26	21	22
9	28	22	23
10	29	23	26
13	31	26	27
15	32	27	28
16	33	28	29
18	34	29	30
21		30	

# Rhythm Math #2

Directions: Add and subtract the note and rest values for each exercise. Fill in the blank with the appropriate valued note or rest. These note and rest values are used:

= 4	= 3	= 2	= 1 1/2	= 1	= 3/4	= 1/2
= 4	= 3	= 2	= 1 1/2	= 1	= 3/4	= 1/2

## Addition



## Subtraction

1. + = \_\_\_

2. + = \_\_\_

3. + + + = \_\_\_

4. + + + = \_\_\_

5. + + + = \_\_\_

6. + = \_\_\_

7. + + + = \_\_\_

8. + + = \_\_\_

9. + + = \_\_\_

10. + + + = \_\_\_

11. - = \_\_\_

12. + - = \_\_\_

13. - + - = \_\_\_

14. + - + = \_\_\_

15. - + - - = \_\_\_

16. - - + + = \_\_\_

17. - - - = \_\_\_

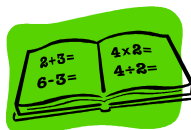


## Bonus



18. x = \_\_\_

19. x - - = \_\_\_



# Rhythm Math #2

Directions: Add and subtract the note and rest values for each exercise. Fill in the blank with the appropriate valued note or rest. These note and rest values are used:

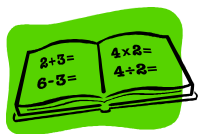
= 4	= 3	= 2	= 1 1/2	= 1	= 3/4	= 1/2
= 4	= 3	= 2	= 1 1/2	= 1	= 3/4	= 1/2

## Addition



## Subtraction

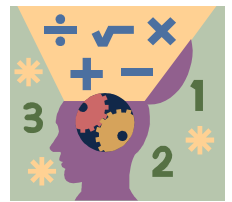
- + =
- + =
- + + + =
- + + + =
- + + + =
- + =
- + + + =
- + + =
- + + =
- + + + =



- =
- + - =
- + - =
- + - + =
- + - - =
- - + + =
- - - =



## Bonus



- x =
- x - - =