



MUSIC

PUZZLES

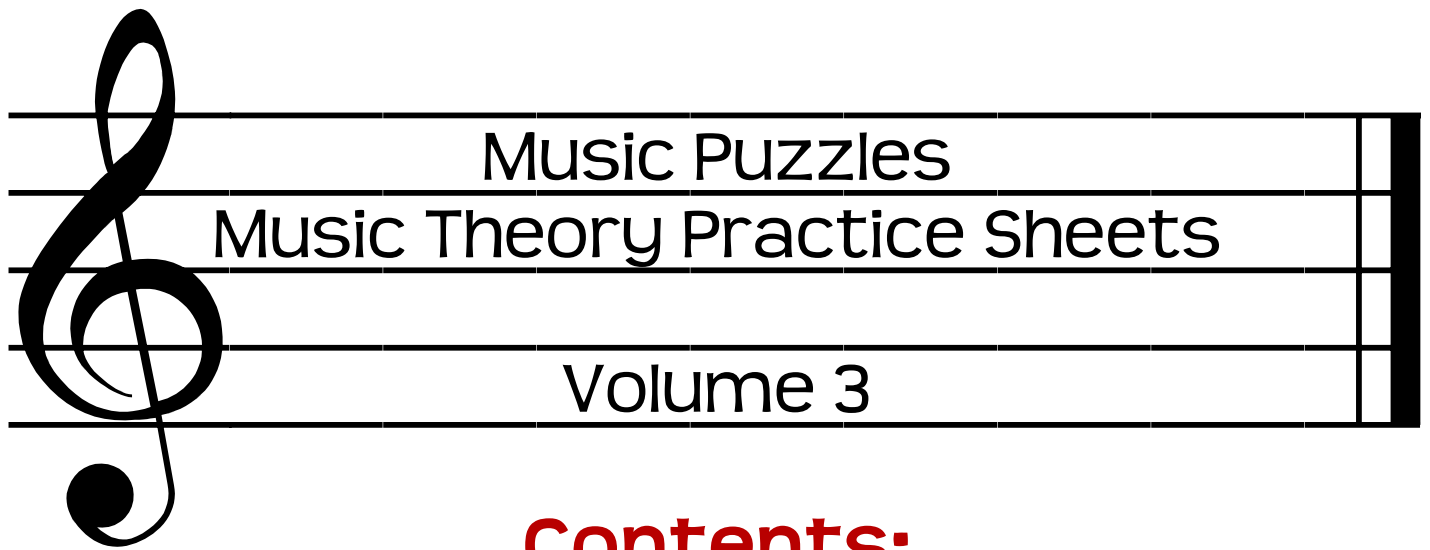


Music Theory Practice Sheets

Volume 3

(5 Music Puzzles and Answer Keys)

by D. Brian Weese



Contents:

Note Name Words #2

Repeat Signs #1

Rhythm Math #1

Rhythm Maze #2

Identifying the Parts of Musical Notation #1

Additional Notes:

Directions for the Teacher:

These practice sheets are designed for use in the classroom, whether you are teaching in various public school classroom situations, homeschooling or teaching graded church choirs. You will find many different concepts within these worksheets. It is up to you as the instructor to teach the desired content and then decide how you want to use these worksheets, such as for review practice or take home assignments following the teaching of a new concept.

Copyright Permissions:

You have permission to photocopy these puzzles as needed for your classroom/choir situation. You do not have permission to modify and/or resell these worksheets.

Further Contact:

If you have questions, comments or suggestions you can best contact me by sending an email to briansonya@sbcglobal.net.

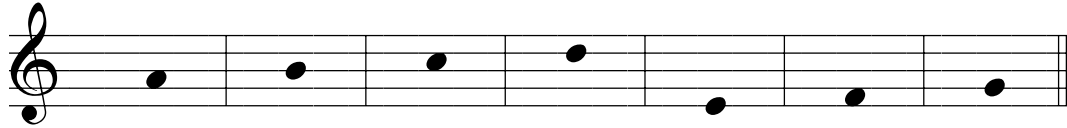




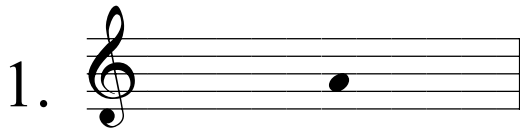
NOTE NAME WORDS #2



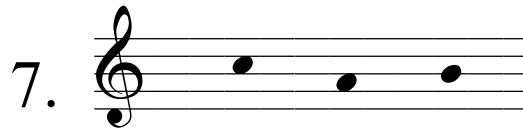
Directions: Fill in the blanks with a letter from the musical alphabet, using the following musical code, to reveal the words below.

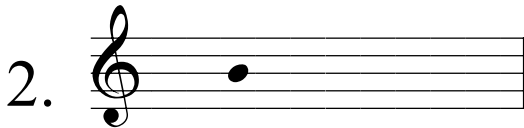


A B C D E F G

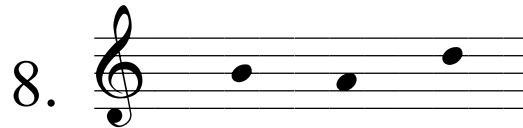


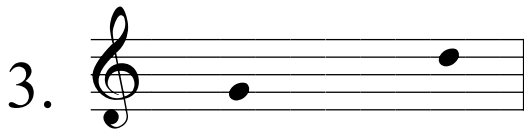
M _ N



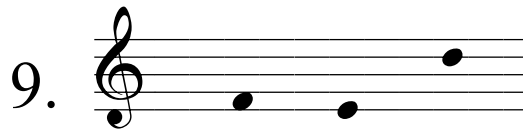


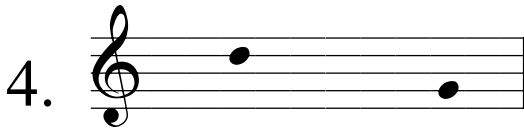
_ U N



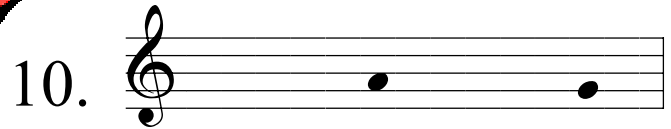


_ O _

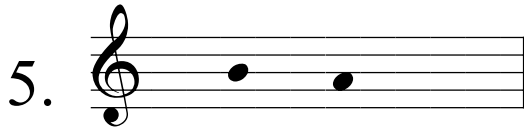




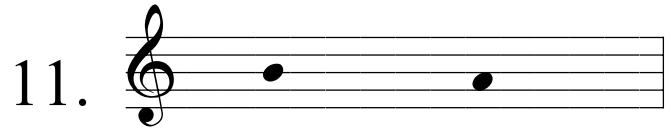
_ I _



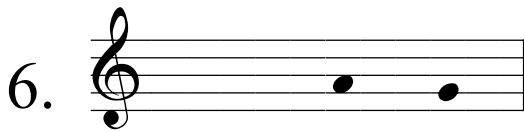
S _ N _



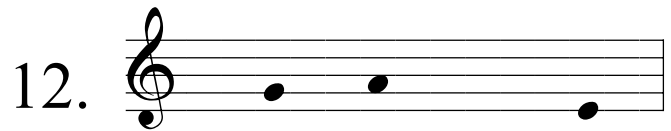
_ _ T



_ O _ T



R _ _



_ _ M _

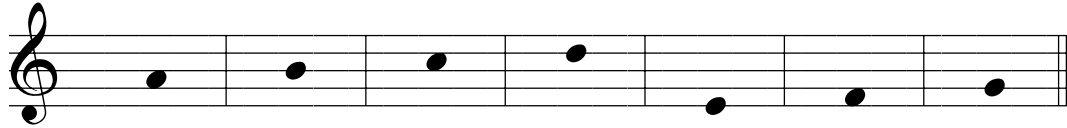




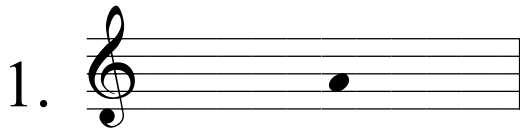
NOTE NAME WORDS #2



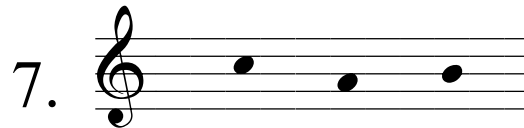
Directions: Fill in the blanks with a letter from the musical alphabet, using the following musical code, to reveal the words below.



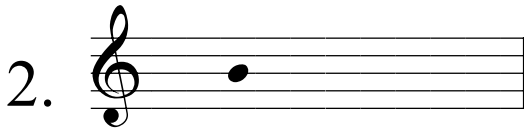
A B C D E F G



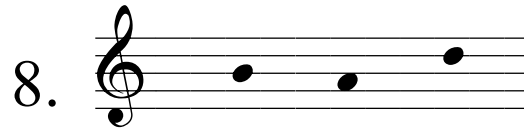
M A N



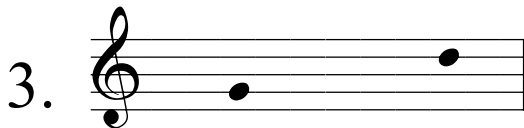
C A B



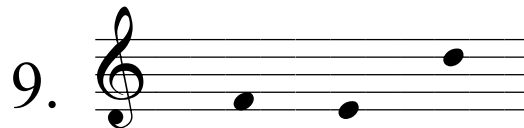
B U N



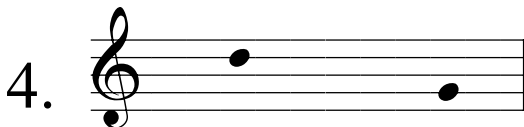
B A D



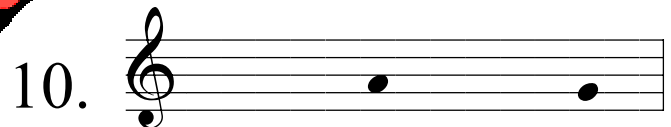
G O D



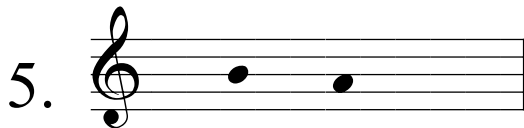
F E D



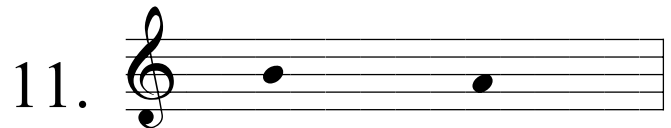
D I G



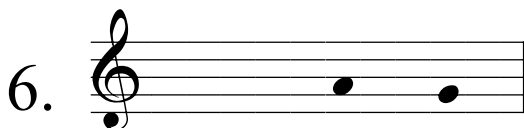
S A N G



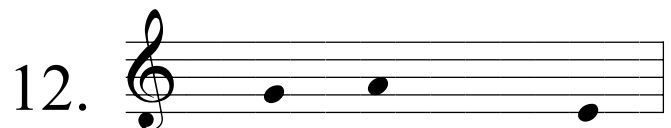
B A T



B O A T



R A G



G A M E



RHYTHM MATH #1

Directions: Add and subtract the note values for each exercise and fill in the blank with the appropriate valued note. These note values are used:

$\circ = 4$	$\text{♩} = 3$	$\text{♪} = 2$	$\text{♩} = 1 \frac{1}{2}$	$\text{♩} = 1$	$\text{♪} = \frac{1}{2}$
-------------	----------------	----------------	----------------------------	----------------	--------------------------

Addition

Subtraction

1. $\text{♩} + \text{♩} = \underline{\quad}$

2. $\text{♪} + \text{♪} = \underline{\quad}$

3. $\text{♪} + \text{♩} + \text{♩} + \text{♩} = \underline{\quad}$

4. $\text{♩} + \text{♩} + \text{♩} + \text{♩} = \underline{\quad}$

5. $\text{♩} + \text{♩} = \underline{\quad}$

6. $\text{♪} + \text{♩} + \text{♩} + \text{♩} = \underline{\quad}$

7. $\text{♪} + \text{♩} = \underline{\quad}$

8. $\text{♩} + \text{♩} = \underline{\quad}$

9. $\text{♪} + \text{♩} + \text{♩} = \underline{\quad}$

10. $\text{♪} + \text{♩} + \text{♩} + \text{♩} + \text{♩} = \underline{\quad}$

11. $\text{♩} - \text{♩} = \underline{\quad}$

12. $\circ - \text{♩} = \underline{\quad}$

13. $\text{♩} + \circ - \text{♩} = \underline{\quad}$

14. $\text{♩} + \text{♩} - \text{♩} + \text{♩} = \underline{\quad}$

15. $\text{♩} - \text{♪} - \text{♩} + \text{♩} + \text{♩} = \underline{\quad}$

16. $\text{♩} - \text{♩} + \text{♩} - \text{♩} - \text{♪} = \underline{\quad}$

17. $\circ - \text{♩} - \text{♪} - \text{♩} = \underline{\quad}$



BONUS

18. $\text{♩} \times \text{♩} = \underline{\quad}$

19. $\text{♩} \times \text{♩} - \circ - \text{♪} = \underline{\quad}$

RHYTHM MATH #1

Directions: Add and subtract the note values for each exercise and fill in the blank with the appropriate valued note. These note values are used:

 = 4	 = 3	 = 2	 = 1 1/2	 = 1	 = 1/2
---------------------------------------------------------------------------------------	---------------------------------------------------------------------------------------	---------------------------------------------------------------------------------------	-------------------------------------------------------------------------------------------	-----------------------------------------------------------------------------------------	-------------------------------------------------------------------------------------------




Addition




1.  +  = 




2.  +  = 


3.  +  +  +  = 

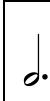
4.  +  +  +  = 



5.  +  = 

6.  +  +  +  = 

7.  +  = 

8.  +  = 

9.  +  +  = 





10.  +  +  +  +  = 



Subtraction







11.  -  = 

12.  -  = 

13.  +  -  = 

14.  +  -  +  = 

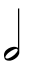
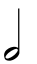

15.  -  -  +  +  = 






16.  -  +  -  -  = 

17.  -  -  -  = 



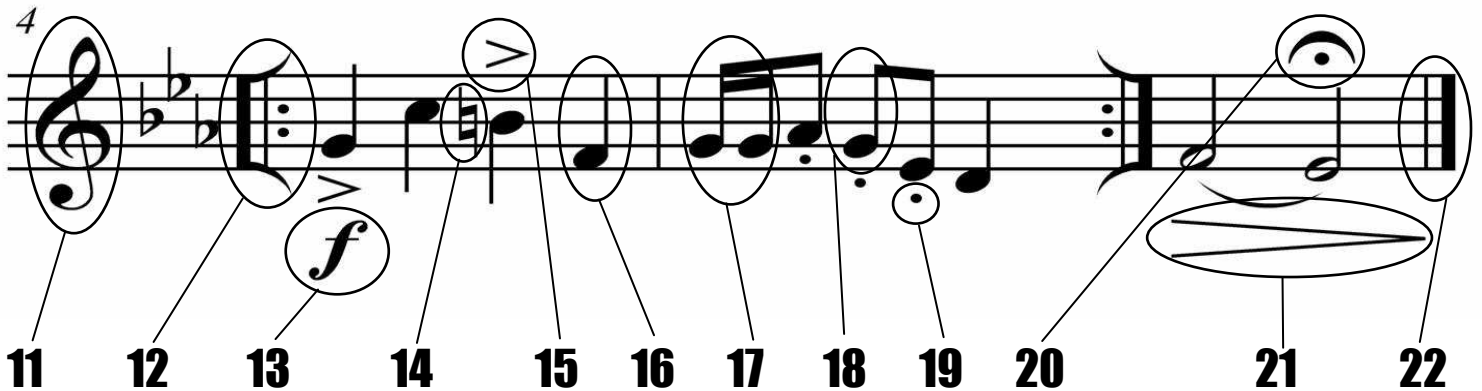
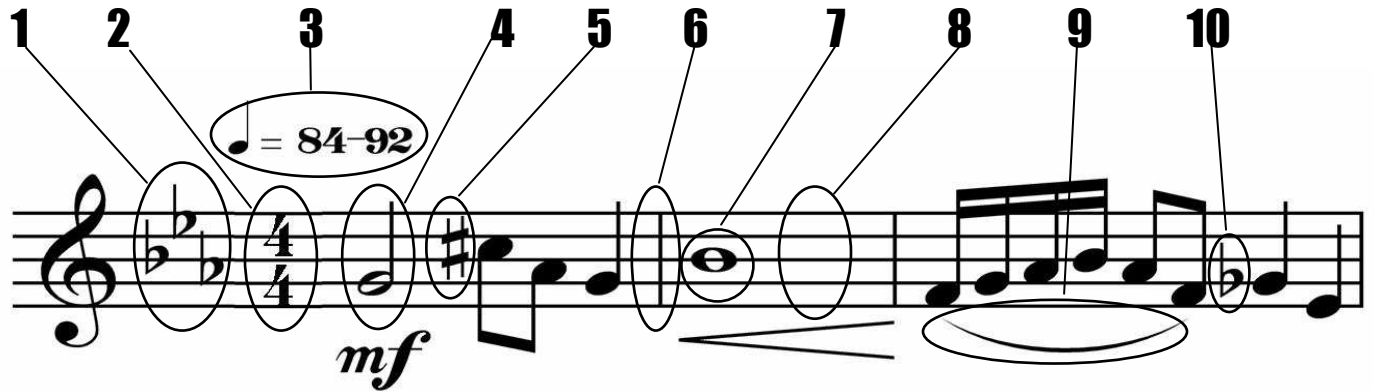
BONUS

18.  ×  = 

19.  ×  -  -  = 

IDENTIFYING THE PARTS OF MUSICAL NOTATION #1

Directions: Identify the musical parts that are circled. The numbers in the top diagram correspond to the numbers next to the blanks and circles at the bottom of the page. Write the names of each musical part in the correct blanks, one letter per blank and circle. When you are done the circled blanks should spell the names of four famous composers reading down. One of the numbers below is used more than once.



18	---	○	---
20	---	○	---
13	---	○	---
8	---	○	---
5	---	○	---
7	---	○	---
6	---	○	---
14	---	○	---

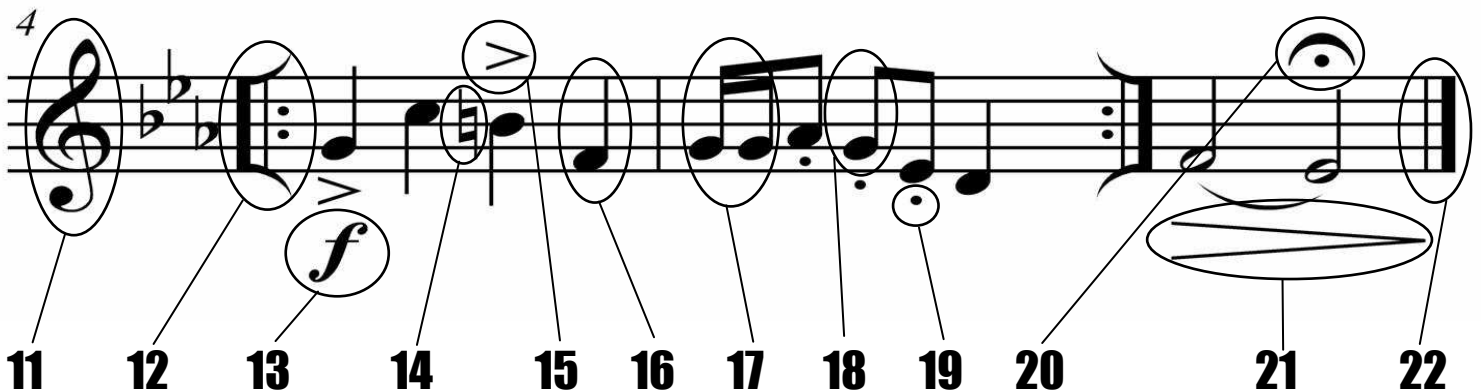
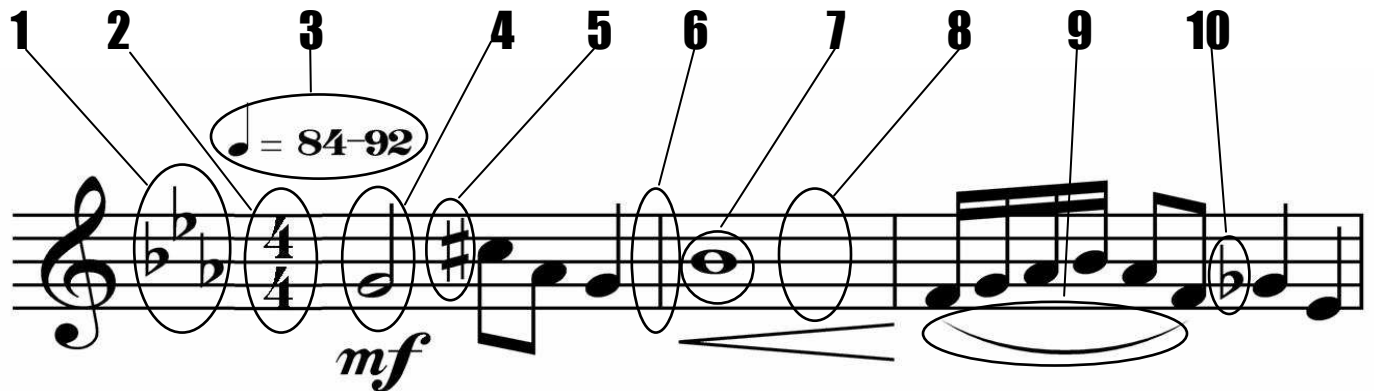
6	---	○	---
16	---	○	---
19	---	○	---
4	---	○	---
3	---	○	---
1	---	○	---

11	---	○	---
10	---	○	---
15	---	○	---
5	---	○	---

17	---	○	---
2	---	○	---
21	---	○	---
22	---	○	---
12	---	○	---
9	---	○	---

IDENTIFYING THE PARTS OF MUSICAL NOTATION #1

Directions: Identify the musical parts that are circled. The numbers in the top diagram correspond to the numbers next to the blanks and circles at the bottom of the page. Write the names of each musical part in the correct blanks, one letter per blank and circle. When you are done the circled blanks should spell the names of four famous composers reading down. One of the numbers below is used more than once.



18 e i **G** h t h n o t e
 20 f **E** r m a t a
 13 f o **R** t e
 8 s **T** a f f
 5 s **H** a r p
 7 **W** h o l e n o t e
 6 b a r l **I** n e
 14 **N** a t u r a l

6 **B** a r l i n e
 16 q u a **R** t e r n o t e
 19 s t **A** c c a t o
 4 **H** a l f n o t e
 3 t e **M** p o
 1 k e y **S** i g n a t u r e

11 t r e **B** l e c l e f
 10 f l **A** t
 15 a c **C** e n t
 5 s **H** a r p

17 s i x t e e n t **H** n o t e s
 2 t i m e s i g n **A** t u r e
 21 d e c r e s c e n **D** o
 22 e n **D** b a r l i n e
 12 r e p **E** a t s i g n
 9 s **L** u r